

Product Datasheet

S100A16 Antibody NBP2-60725

Unit Size: 100 ul

Store at 4°C.

www.novusbio.com



technical@novusbio.com

Protocols, Publications, Related Products, Reviews, Research Tools and Images at:
www.novusbio.com/NBP2-60725

Updated 10/10/2022 v.20.1

Earn rewards for product
reviews and publications.

Submit a publication at www.novusbio.com/publications

Submit a review at www.novusbio.com/reviews/destination/NBP2-60725



NBP2-60725

S100A16 Antibody

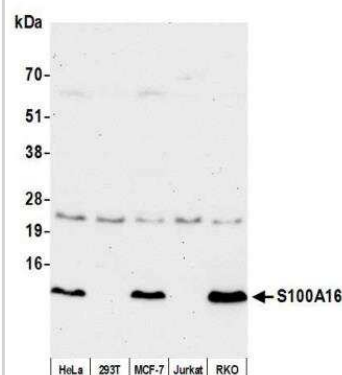
Product Information	
Unit Size	100 ul
Concentration	Please see the vial label for concentration. If unlisted please contact technical services.
Storage	Store at 4°C.
Clonality	Polyclonal
Preservative	0.09% Sodium Azide
Isotype	IgG
Purity	Affinity purified
Buffer	Tris-buffered Saline containing 0.1% BSA

Product Description	
Host	Rabbit
Gene ID	140576
Gene Symbol	S100A16
Species	Human
Immunogen	Maps to a region between residue 53 to 103 of human Protein S100-A16 using the numbering given in entry Q96FQ6.1 (GeneID 140576)

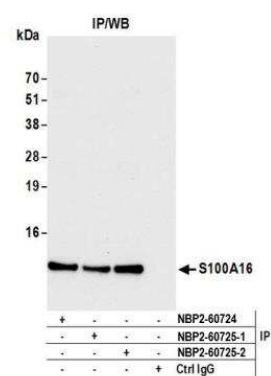
Product Application Details	
Applications	Western Blot, Immunoprecipitation
Recommended Dilutions	Western Blot 1:1000, Immunoprecipitation 20-40 ul/mg lysate

Images

Western Blot: S100A16 Antibody [NBP2-60725] - Detection of human S100A16 by western blot. Samples: Whole cell lysate (50 ug) from HeLa, HEK293T, MCF-7, Jurkat, and RKO cells prepared using NETN lysis buffer. Antibody: Affinity purified rabbit anti-S100A16 antibody NBP2-60725 used for WB at 1:1000. Detection: Chemiluminescence with an exposure time of 30 seconds.



Immunoprecipitation: S100A16 Antibody [NBP2-60725] - Detection of human S100A16 by western blot of immunoprecipitates. Samples: Whole cell lysate (1.0 mg per IP reaction; 20% of IP loaded) from HeLa cells prepared using NETN lysis buffer. Antibodies: Affinity purified Rabbit anti-S100A16 antibody NBP2-60725 (lot NBP2-60725-2) used for IP at 20 ul per reaction. S100A16 was also immunoprecipitated by a previous lot of this antibody (lot NBP2-60725-1) and rabbit anti-S100A16 antibody NBP2-60724. For blotting immunoprecipitated S100A16, NBP2-60725 was used at 1:1000. Detection: Chemiluminescence with an exposure time of 10 seconds.





Novus Biologicals USA

10730 E. Briarwood Avenue
Centennial, CO 80112
USA

Phone: 303.730.1950

Toll Free: 1.888.506.6887

Fax: 303.730.1966

nb-customerservice@bio-techne.com

Bio-Techne Canada

21 Canmotor Ave
Toronto, ON M8Z 4E6
Canada

Phone: 905.827.6400

Toll Free: 855.668.8722

Fax: 905.827.6402

canada.inquires@bio-techne.com

Bio-Techne Ltd

19 Barton Lane
Abingdon Science Park
Abingdon, OX14 3NB, United Kingdom

Phone: (44) (0) 1235 529449

Free Phone: 0800 37 34 15

Fax: (44) (0) 1235 533420

info.EMEA@bio-techne.com

General Contact Information

www.novusbio.com

Technical Support: nb-technical@bio-techne.com

Orders: nb-customerservice@bio-techne.com

General: novus@novusbio.com

Limitations

This product is for research use only and is not approved for use in humans or in clinical diagnosis. Primary Antibodies are guaranteed for 1 year from date of receipt.

For more information on our 100% guarantee, please visit www.novusbio.com/guarantee

Earn gift cards/discounts by submitting a review: www.novusbio.com/reviews/submit/NBP2-60725

Earn gift cards/discounts by submitting a publication using this product:
www.novusbio.com/publications

