

Product Datasheet

PBDC1 Antibody NBP2-60721

Unit Size: 100 ul

Store at 4°C.

www.novusbio.com



technical@novusbio.com

Protocols, Publications, Related Products, Reviews, Research Tools and Images at:
www.novusbio.com/NBP2-60721

Updated 10/10/2022 v.20.1

Earn rewards for product
reviews and publications.

Submit a publication at www.novusbio.com/publications

Submit a review at www.novusbio.com/reviews/destination/NBP2-60721



NBP2-60721

PBDC1 Antibody

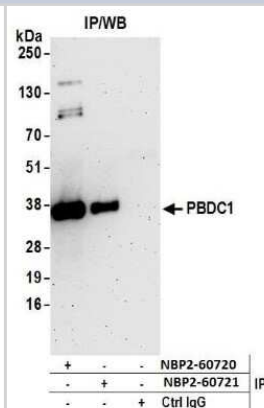
Product Information	
Unit Size	100 ul
Concentration	Please see the vial label for concentration. If unlisted please contact technical services.
Storage	Store at 4°C.
Clonality	Polyclonal
Preservative	0.09% Sodium Azide
Isotype	IgG
Purity	Affinity purified
Buffer	Tris-buffered Saline containing 0.1% BSA

Product Description	
Host	Rabbit
Gene ID	51260
Gene Symbol	PBDC1
Species	Human
Immunogen	between 183 and 233

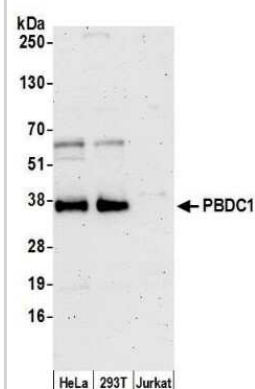
Product Application Details	
Applications	Western Blot, Immunoprecipitation
Recommended Dilutions	Western Blot 1:1000, Immunoprecipitation 20 ul/mg lysate

Images

Western Blot: PBDC1 Antibody [NBP2-60721] - Detection of human PBDC1 by western blot of immunoprecipitates. Samples: Whole cell lysate (0.5 or 1.0 mg per IP reaction; 20% of IP loaded) from 293T cells prepared using NETN lysis buffer. Antibodies: Affinity purified rabbit anti-PBDC1 antibody NBP2-60721 used for IP at 20 ul per reaction. PBDC1 was also immunoprecipitated by rabbit anti-PBDC1 antibody NBP2-60720. For blotting immunoprecipitated PBDC1, NBP2-60721 was used at 1:250. Detection: Chemiluminescence with an exposure time of 3 minutes.



Western Blot: PBDC1 Antibody [NBP2-60721] - Detection of human PBDC1 by western blot. Samples: Whole cell lysate (15 ug) from HeLa, 293T, and Jurkat cells prepared using NETN lysis buffer. Antibody: Affinity purified rabbit anti-PBDC1 antibody NBP2-60721 used for WB at 1:1000. Detection: Chemiluminescence with an exposure time of 3 minutes. Previous





Novus Biologicals USA

10730 E. Briarwood Avenue
Centennial, CO 80112
USA

Phone: 303.730.1950

Toll Free: 1.888.506.6887

Fax: 303.730.1966

nb-customerservice@bio-techne.com

Bio-Techne Canada

21 Canmotor Ave
Toronto, ON M8Z 4E6
Canada

Phone: 905.827.6400

Toll Free: 855.668.8722

Fax: 905.827.6402

canada.inquires@bio-techne.com

Bio-Techne Ltd

19 Barton Lane
Abingdon Science Park
Abingdon, OX14 3NB, United Kingdom

Phone: (44) (0) 1235 529449

Free Phone: 0800 37 34 15

Fax: (44) (0) 1235 533420

info.EMEA@bio-techne.com

General Contact Information

www.novusbio.com

Technical Support: nb-technical@bio-techne.com

Orders: nb-customerservice@bio-techne.com

General: novus@novusbio.com

Limitations

This product is for research use only and is not approved for use in humans or in clinical diagnosis. Primary Antibodies are guaranteed for 1 year from date of receipt.

For more information on our 100% guarantee, please visit www.novusbio.com/guarantee

Earn gift cards/discounts by submitting a review: www.novusbio.com/reviews/submit/NBP2-60721

Earn gift cards/discounts by submitting a publication using this product:
www.novusbio.com/publications

