

Product Datasheet

Goat anti-Human Kappa Light Chain Secondary Antibody NBP2-60691

Unit Size: 1 mg

Store at 4C short term. Aliquot and store at -20C long term. Avoid freeze-thaw cycles.

www.novusbio.com



technical@novusbio.com

Protocols, Publications, Related Products, Reviews, Research Tools and Images at:
www.novusbio.com/NBP2-60691

Updated 11/26/2023 v.20.1

Earn rewards for product
reviews and publications.

Submit a publication at www.novusbio.com/publications

Submit a review at www.novusbio.com/reviews/destination/NBP2-60691

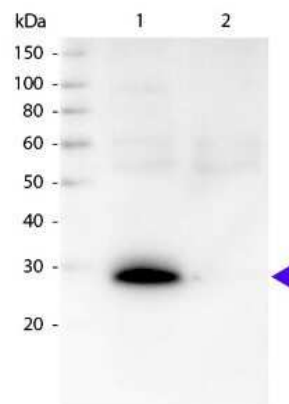


NBP2-60691**Goat anti-Human Kappa Light Chain Secondary Antibody**

Product Information	
Unit Size	1 mg
Concentration	Please see the vial label for concentration. If unlisted please contact technical services.
Storage	Store at 4C short term. Aliquot and store at -20C long term. Avoid freeze-thaw cycles.
Clonality	Polyclonal
Preservative	0.01% Sodium Azide
Isotype	IgG
Purity	Multi-step
Buffer	0.125 M Sodium Borate, 0.075 M Sodium Chloride, 0.005 M EDTA, pH 8.0
Product Description	
Description	<p>This product was prepared from monospecific antiserum by immunoaffinity chromatography using antigens coupled to agarose beads followed by solid phase adsorption(s) to remove any unwanted reactivities. Assay by immunoelectrophoresis resulted in a single precipitin arc against anti-Goat Serum</p> <p>Store vial at 4C prior to opening. This product is stable for several weeks at 4C as an undiluted liquid. Dilute only prior to immediate use. For extended storage aliquot contents and freeze at -20C or below. Avoid cycles of freezing and thawing.</p>
Host	Goat
Gene ID	3514
Gene Symbol	IGKC
Species	Human
Specificity/Sensitivity	Specificity for kappa chain was confirmed by ELISA minimal cross reactivity against other human heavy or lambda light chain isotypes.
Immunogen	Human kappa light chain
Product Application Details	
Applications	Western Blot, ELISA, Immunohistochemistry
Recommended Dilutions	Western Blot 1:2000-1:10000, ELISA 1:10000 - 1:20000, Immunohistochemistry 1:1000-1:5000
Application Notes	This product has been tested by ELISA and western blot and is suitable for immunohistochemistry and immunoassays where specificity to the immunoglobulin kappa subunit is desired. Optimal concentrations in immunoassays should be determined by the researcher.

Images

Western Blot: Goat anti-Human Kappa Light Chain Secondary Antibody [Unconjugated] (Pre-adsorbed) [NBP2-60691] - Lane 1: Human ?. Lane 2: Human lambda. Load: 50 ng per lane. Primary antibody: None. Secondary antibody: Biotin rabbit secondary antibody at 1:1,000 for 60 min at RT. Blocking: incubated with blocking buffer for 30 min at RT. Predicted/Observed size: 28 kDa, 28 kDa for Human ?. Other band(s): None. Image using the Biotin form of this antibody.





Novus Biologicals USA

10730 E. Briarwood Avenue
Centennial, CO 80112
USA
Phone: 303.730.1950
Toll Free: 1.888.506.6887
Fax: 303.730.1966
nb-customerservice@bio-techne.com

Bio-Techne Canada

21 Canmotor Ave
Toronto, ON M8Z 4E6
Canada
Phone: 905.827.6400
Toll Free: 855.668.8722
Fax: 905.827.6402
canada.inquires@bio-techne.com

Bio-Techne Ltd

19 Barton Lane
Abingdon Science Park
Abingdon, OX14 3NB, United Kingdom
Phone: (44) (0) 1235 529449
Free Phone: 0800 37 34 15
Fax: (44) (0) 1235 533420
info.EMEA@bio-techne.com

General Contact Information

www.novusbio.com
Technical Support: nb-technical@bio-techne.com
Orders: nb-customerservice@bio-techne.com
General: novus@novusbio.com

Limitations

This product is for research use only and is not approved for use in humans or in clinical diagnosis. Secondary Antibodies are guaranteed for 1 year from date of receipt.

For more information on our 100% guarantee, please visit www.novusbio.com/guarantee

Earn gift cards/discounts by submitting a review: www.novusbio.com/reviews/submit/NBP2-60691

Earn gift cards/discounts by submitting a publication using this product:
www.novusbio.com/publications

