

# Product Datasheet

## Goat anti-Rat IgM Heavy Chain Secondary Antibody NBP2-60672

Unit Size: 1 mg

Store at 4C short term. Aliquot and store at -20C long term. Avoid freeze-thaw cycles.

[www.novusbio.com](http://www.novusbio.com)



[technical@novusbio.com](mailto:technical@novusbio.com)

### Publications: 1

Protocols, Publications, Related Products, Reviews, Research Tools and Images at:  
[www.novusbio.com/NBP2-60672](http://www.novusbio.com/NBP2-60672)

Updated 5/29/2024 v.20.1

Earn rewards for product  
reviews and publications.

Submit a publication at [www.novusbio.com/publications](http://www.novusbio.com/publications)

Submit a review at [www.novusbio.com/reviews/destination/NBP2-60672](http://www.novusbio.com/reviews/destination/NBP2-60672)



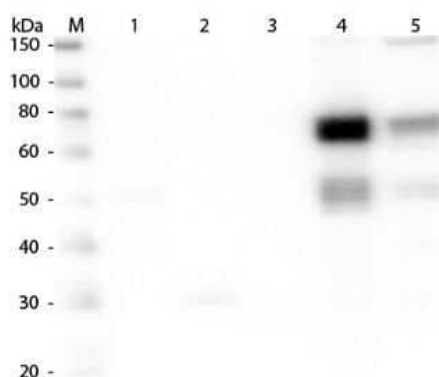
**NBP2-60672****Goat anti-Rat IgM Heavy Chain Secondary Antibody**

| <b>Product Information</b>         |   |
|------------------------------------|---|
| <b>Unit Size</b>                   | 1 mg  |
| <b>Concentration</b>               | Please see the vial label for concentration. If unlisted please contact technical services.   |
| <b>Storage</b>                     | Store at 4C short term. Aliquot and store at -20C long term. Avoid freeze-thaw cycles.  |
| <b>Clonality</b>                   | Polyclonal  |
| <b>Preservative</b>                | 0.01% Sodium Azide  |
| <b>Isotype</b>                     | IgG   |
| <b>Purity</b>                      | Multi-step  |
| <b>Buffer</b>                      | 0.02 M Potassium Phosphate, 0.15 M Sodium Chloride, pH 7.2  |
| <b>Product Description</b>         |   |
| <b>Description</b>                 | <p>This product was prepared from monospecific antiserum by immunoaffinity chromatography using Rat IgM coupled to agarose beads followed by solid phase adsorption(s) to remove any unwanted reactivities. Assay by immunoelectrophoresis resulted in a single precipitin arc against anti-Goat Serum, Rat IgM and Rat Serum</p> <p>Store vial at 4C prior to opening. This product is stable for several weeks at 4C as an undiluted liquid. Dilute only prior to immediate use. For extended storage aliquot contents and freeze at -20C or below. Avoid cycles of freezing and thawing.</p> |
| <b>Host</b>                        | Goat  |
| <b>Gene ID</b>                     | 3507  |
| <b>Gene Symbol</b>                 | IGHM  |
| <b>Species</b>                     | Rat   |
| <b>Specificity/Sensitivity</b>     | No reaction was observed against other rat heavy or light chain proteins.   |
| <b>Immunogen</b>                   | Rat IgM whole molecule  |
| <b>Product Application Details</b> |   |
| <b>Applications</b>                | Western Blot, ELISA, Fluorophore-linked immunosorbent assay, Immunocytochemistry/ Immunofluorescence, Immunohistochemistry, Immunohistochemistry-Paraffin   |
| <b>Recommended Dilutions</b>       | Western Blot 1:2000-1:10000, ELISA 1:80000, Immunohistochemistry 1:1000-1:5000, Immunocytochemistry/ Immunofluorescence, Immunohistochemistry-Paraffin 1:1000 - 1:5000, Fluorophore-linked immunosorbent assay  |
| <b>Application Notes</b>           | This product has been tested by ELISA and western blot and is assayed against Rat IgM in a standard capture ELISA using Peroxidase Conjugated Streptavidin. A working dilution of 1:15,000 to 1:70,000 of the concentration is suggested for this product. Rat IgM antibody is suitable for immunoassays including western blot and ELISA.  |

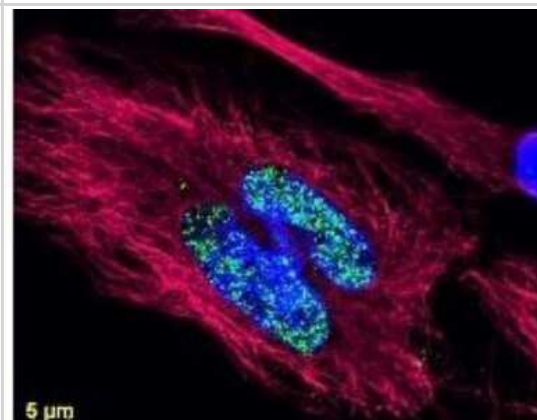


## Images

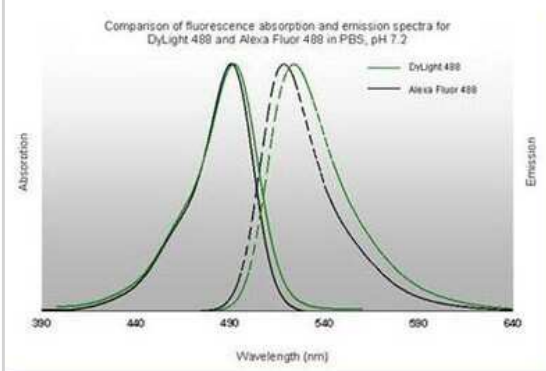
Western Blot: Goat anti-Rat IgM Heavy Chain Secondary Antibody [NBP2-60672] - Lane 1: Rat IgG whole molecule. Lane 2: Rat IgG F(c) Fragment. Lane 3: Rat IgG Fab Fragment. Lane 4: Rat IgM Whole Molecule. Lane 5: Rat Serum. All samples were reduced. Load: 50 ng per lane. Block: incubated with blocking buffer for 30 min at RT. Primary Antibody: Anti-Rat IgM (mu chain) (GOAT) Antibody 1:1,000 for 60 min at RT. Secondary Antibody: Anti-Goat IgG (DONKEY) Peroxidase Conjugated Antibody 1:40,000 in incubated with blocking buffer for 30 min at RT. Predicted/Observed Size: 25 and 55 kDa for Rat IgG and Serum, 25 kDa for F(c) and Fab, 78 and 25 kDa for IgM. Rat F(c) migrates slightly higher. Image using the Biotin form of this antibody.



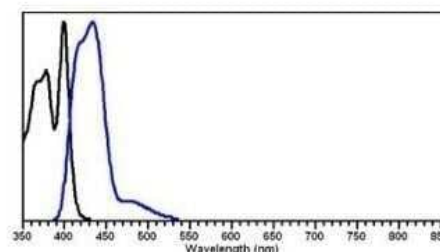
Immunocytochemistry/Immunofluorescence: Goat anti-Rat IgM Heavy Chain Secondary Antibody [NBP2-60672] - Anti-histone detection using a DyLight 488 conjugate (green). Anti-Tubulin was detected using a DyLight 549 conjugate (red). Nuclei were counter-stained using DAPI (blue). The image was captured using an Axio Imager.Z1 (Zeiss Micro Imaging Inc). Image using the DyLight 488 format of this antibody.



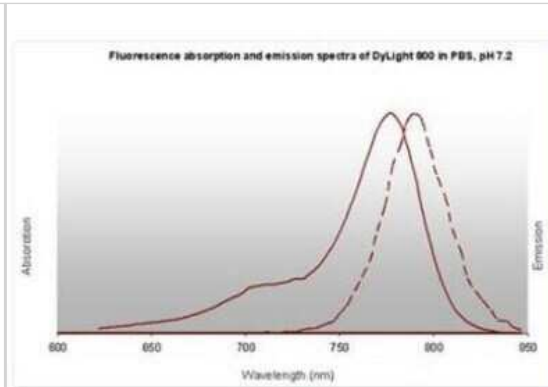
Fluorophore-linked immunosorbent assay: Goat anti-Rat IgM Heavy Chain Secondary Antibody [NBP2-60672] - Image using the DyLight 488 format of this antibody.



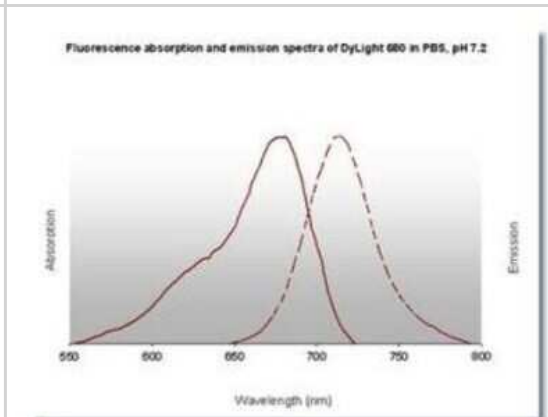
Fluorophore-linked immunosorbent assay: Goat anti-Rat IgM Heavy Chain Secondary Antibody [NBP2-60672] - Image using the DyLight 405 format of this antibody.



Fluorophore-linked immunosorbent assay: Goat anti-Rat IgM Heavy Chain Secondary Antibody [NBP2-60672] - Image using the DyLight 800 format of this antibody.



Fluorophore-linked immunosorbent assay: Goat anti-Rat IgM Heavy Chain Secondary Antibody [NBP2-60672] - Image using the DyLight 680 format of this antibody.



## Publications

Adzemovic MZ, Zeitelhofer M, Hochmeister S et al. Efficacy of vitamin D in treating multiple sclerosis-like neuroinflammation depends on developmental stage Exp Neurol 2013-08-20 [PMID: 23954214] (IHC-P)



### **Novus Biologicals USA**

10730 E. Briarwood Avenue  
Centennial, CO 80112  
USA  
Phone: 303.730.1950  
Toll Free: 1.888.506.6887  
Fax: 303.730.1966  
nb-customerservice@bio-techne.com

### **Bio-Techne Canada**

21 Canmotor Ave  
Toronto, ON M8Z 4E6  
Canada  
Phone: 905.827.6400  
Toll Free: 855.668.8722  
Fax: 905.827.6402  
canada.inquires@bio-techne.com

### **Bio-Techne Ltd**

19 Barton Lane  
Abingdon Science Park  
Abingdon, OX14 3NB, United Kingdom  
Phone: (44) (0) 1235 529449  
Free Phone: 0800 37 34 15  
Fax: (44) (0) 1235 533420  
info.EMEA@bio-techne.com

### **General Contact Information**

www.novusbio.com  
Technical Support: nb-technical@bio-techne.com  
Orders: nb-customerservice@bio-techne.com  
General: novus@novusbio.com

### **Products Related to NBP2-60672**

---

|             |                                       |
|-------------|---------------------------------------|
| NB100-524   | NOD2 Antibody (2D9) - BSA Free        |
| NBP1-96772  | Human IgM Heavy Chain Isotype Control |
| 7268-CT-100 | CTLA-4 [Unconjugated]                 |
| NB200-541   | Complement C4b/d Antibody (16D2)      |

---

### **Limitations**

This product is for research use only and is not approved for use in humans or in clinical diagnosis. Secondary Antibodies are guaranteed for 1 year from date of receipt.

For more information on our 100% guarantee, please visit [www.novusbio.com/guarantee](http://www.novusbio.com/guarantee)

Earn gift cards/discounts by submitting a review: [www.novusbio.com/reviews/submit/NBP2-60672](http://www.novusbio.com/reviews/submit/NBP2-60672)

Earn gift cards/discounts by submitting a publication using this product:  
[www.novusbio.com/publications](http://www.novusbio.com/publications)

