

# Product Datasheet

## Human Protein S/PROS1 ELISA Kit (Colorimetric) NBP2-60585

Unit Size: 1 Kit

Storage is content dependent.

[www.novusbio.com](http://www.novusbio.com)



[technical@novusbio.com](mailto:technical@novusbio.com)

### Publications: 1

Protocols, Publications, Related Products, Reviews, Research Tools and Images at:  
[www.novusbio.com/NBP2-60585](http://www.novusbio.com/NBP2-60585)

Updated 10/23/2024 v.20.1

Earn rewards for product  
reviews and publications.

Submit a publication at [www.novusbio.com/publications](http://www.novusbio.com/publications)

Submit a review at [www.novusbio.com/reviews/destination/NBP2-60585](http://www.novusbio.com/reviews/destination/NBP2-60585)



**NBP2-60585****Human Protein S/PROS1 ELISA Kit (Colorimetric)**

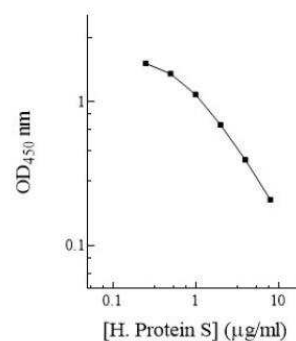
<b>Product Information</b>	
<b>Unit Size</b>	1 Kit
<b>Concentration</b>	Concentration is not relevant for this product. Please see the protocols for proper use of this product.
<b>Storage</b>	Storage is content dependent.
<b>Product Description</b>	
<b>Description</b>	This assay employs a quantitative enzyme immunoassay technique that measures the specified antigen in samples.
<b>Gene ID</b>	5627
<b>Gene Symbol</b>	PROS1
<b>Species</b>	Human
<b>Standard Curve Range</b>	0.25-8 ug/ml (example only; lot dependent)
<b>Sensitivity</b>	0.19 ug/ml (example only; lot dependent)
<b>Inter Assay</b>	CV% < 9.30% (example only; lot dependent)
<b>Intra Assay</b>	CV% < 4.30% (example only; lot dependent)
<b>Assay Type</b>	Competitive ELISA
<b>Spiking Recovery</b>	97.00% (example only; lot dependent)
<b>Suitable Sample Type</b>	Serum, Plasma, Cell Culture
<b>Product Application Details</b>	
<b>Applications</b>	ELISA
<b>Recommended Dilutions</b>	ELISA



## Images

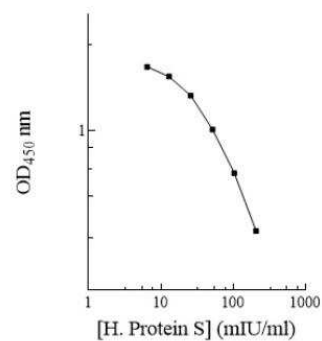
ELISA: Human Protein S/PROS1 ELISA Kit (Colorimetric) [NBP2-60585]  
- Standard curve.

H. Protein S Standard Curve



ELISA: Human Protein S/PROS1 ELISA Kit (Colorimetric) [NBP2-60585]  
- Standard curve.

Human Protein S Standard Curve



## Publications

Yalcinkaya A, Cavalli M, Aranda-Guillón M et al. Autoantibodies to protein S may explain rare cases of coagulopathy following COVID-19 vaccination Scientific Reports 2024-10-18 [PMID: 39424883]



### **Novus Biologicals USA**

10730 E. Briarwood Avenue  
Centennial, CO 80112  
USA  
Phone: 303.730.1950  
Toll Free: 1.888.506.6887  
Fax: 303.730.1966  
nb-customerservice@bio-techne.com

### **Bio-Techne Canada**

21 Canmotor Ave  
Toronto, ON M8Z 4E6  
Canada  
Phone: 905.827.6400  
Toll Free: 855.668.8722  
Fax: 905.827.6402  
canada.inquires@bio-techne.com

### **Bio-Techne Ltd**

19 Barton Lane  
Abingdon Science Park  
Abingdon, OX14 3NB, United Kingdom  
Phone: (44) (0) 1235 529449  
Free Phone: 0800 37 34 15  
Fax: (44) (0) 1235 533420  
info.EMEA@bio-techne.com

### **General Contact Information**

www.novusbio.com  
Technical Support: nb-technical@bio-techne.com  
Orders: nb-customerservice@bio-techne.com  
General: novus@novusbio.com

### **Products Related to NBP2-60585**

---

NBP1-87218PEP	Protein S/PROS1 Recombinant Protein Antigen
AF262	Amphiregulin Antibody
AF4036	Protein S/PROS1 Antibody [Unconjugated]
AF2408	NCAM-1/CD56 Antibody [Unconjugated]

---

### **Limitations**

This product is for research use only and is not approved for use in humans or in clinical diagnosis. ELISA Kits are guaranteed for 6 months from date of receipt.

For more information on our 100% guarantee, please visit [www.novusbio.com/guarantee](http://www.novusbio.com/guarantee)

Earn gift cards/discounts by submitting a review: [www.novusbio.com/reviews/submit/NBP2-60585](http://www.novusbio.com/reviews/submit/NBP2-60585)

Earn gift cards/discounts by submitting a publication using this product:  
[www.novusbio.com/publications](http://www.novusbio.com/publications)

