

Product Datasheet

Human LRG1 ELISA Kit (Colorimetric) NBP2-60577

Unit Size: 1 Kit

Storage is content dependent.

www.novusbio.com



technical@novusbio.com

Publications: 2

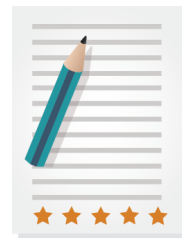
Protocols, Publications, Related Products, Reviews, Research Tools and Images at:
www.novusbio.com/NBP2-60577

Updated 10/23/2024 v.20.1

Earn rewards for product
reviews and publications.

Submit a publication at www.novusbio.com/publications

Submit a review at www.novusbio.com/reviews/destination/NBP2-60577



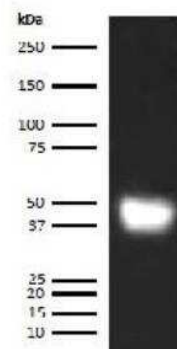
NBP2-60577**Human LRG1 ELISA Kit (Colorimetric)**

Product Information	
Unit Size	1 Kit
Concentration	Concentration is not relevant for this product. Please see the protocols for proper use of this product.
Storage	Storage is content dependent.
Product Description	
Description	This assay employs a quantitative enzyme immunoassay technique that measures the specified antigen in samples.
Gene ID	116844
Gene Symbol	LRG1
Species	Human
Standard Curve Range	0.313-20 ng/ml (example only; lot dependent)
Sensitivity	0.17 ng/ml (example only; lot dependent)
Inter Assay	CV% < 9.40% (example only; lot dependent)
Intra Assay	CV% < 3.10% (example only; lot dependent)
Assay Type	Sandwich ELISA
Spiking Recovery	96.00% (example only; lot dependent)
Suitable Sample Type	Serum, Plasma, Cell Culture, Urine, Saliva, Milk, CSF
Product Application Details	
Applications	ELISA, Sandwich ELISA
Recommended Dilutions	ELISA, Sandwich ELISA

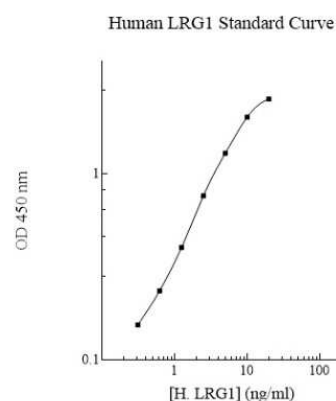


Images

Western Blot: Human LRG1 ELISA Kit (Colorimetric) [NBP2-60577] - Western blot against Recombinant Human LRG1 Protein (7890-LR-025) using the capture antibody from Human LRG1 (Colorimetric) ELISA Kit.



ELISA: Human LRG1 ELISA Kit (Colorimetric) [NBP2-60577]



Publications

Tang Y, Ling N, Li S Et al. A panel of urine-derived biomarkers to identify sepsis and distinguish it from systemic inflammatory response syndrome Scientific reports 2021-10-21 [PMID: 34675320] (ELISA)

Kakar M, Berezovska MM, Broks R et al. Serum and Urine Biomarker Leucine-Rich Alpha-2 Glycoprotein 1 Differentiates Pediatric Acute Complicated and Uncomplicated Appendicitis Diagnostics (Basel, Switzerland) 2021-05-11 [PMID: 34064691] (ELISA)



Novus Biologicals USA

10730 E. Briarwood Avenue
Centennial, CO 80112
USA
Phone: 303.730.1950
Toll Free: 1.888.506.6887
Fax: 303.730.1966
nb-customerservice@bio-techne.com

Bio-Techne Canada

21 Canmotor Ave
Toronto, ON M8Z 4E6
Canada
Phone: 905.827.6400
Toll Free: 855.668.8722
Fax: 905.827.6402
canada.inquires@bio-techne.com

Bio-Techne Ltd

19 Barton Lane
Abingdon Science Park
Abingdon, OX14 3NB, United Kingdom
Phone: (44) (0) 1235 529449
Free Phone: 0800 37 34 15
Fax: (44) (0) 1235 533420
info.EMEA@bio-techne.com

General Contact Information

www.novusbio.com
Technical Support: nb-technical@bio-techne.com
Orders: nb-customerservice@bio-techne.com
General: novus@novusbio.com

Products Related to NBP2-60577

NBP1-82823PEP	LRG1 Recombinant Protein Antigen
M6000B-1	IL-6 [HRP]
NBP1-82822	LRG1 Antibody - BSA Free
7954-GM-010/CF	GM-CSF [Unconjugated]

Limitations

This product is for research use only and is not approved for use in humans or in clinical diagnosis. ELISA Kits are guaranteed for 6 months from date of receipt.

For more information on our 100% guarantee, please visit www.novusbio.com/guarantee

Earn gift cards/discounts by submitting a review: www.novusbio.com/reviews/submit/NBP2-60577

Earn gift cards/discounts by submitting a publication using this product:
www.novusbio.com/publications

