

Product Datasheet

Human Complement C3b ELISA Kit (Colorimetric) NBP2-60553

Unit Size: 1 Kit

Storage is content dependent.

www.novusbio.com



technical@novusbio.com

Protocols, Publications, Related Products, Reviews, Research Tools and Images at:
www.novusbio.com/NBP2-60553

Updated 10/23/2024 v.20.1

Earn rewards for product
reviews and publications.

Submit a publication at www.novusbio.com/publications

Submit a review at www.novusbio.com/reviews/destination/NBP2-60553



NBP2-60553**Human Complement C3b ELISA Kit (Colorimetric)****Product Information**

Unit Size	1 Kit
Concentration	Concentration is not relevant for this product. Please see the protocols for proper use of this product.
Storage	Storage is content dependent.

Product Description

Description	This assay employs a quantitative enzyme immunoassay technique that measures the specified antigen in samples.
Gene ID	718
Gene Symbol	C3
Species	Human
Standard Curve Range	0.156 - 5 ng/mL (example only; lot dependent)
Sensitivity	0.1 ng/ml (example only; lot dependent)
Inter Assay	CV% < 9.90% (example only; lot dependent)
Intra Assay	CV% < 4.70% (example only; lot dependent)
Assay Type	Sandwich ELISA
Spiking Recovery	97.00% (example only; lot dependent)
Suitable Sample Type	Serum, Plasma, Cell Culture, Urine, Saliva, Milk, CSF

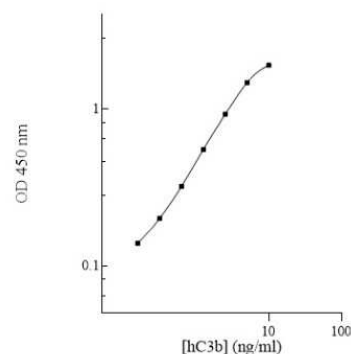
Product Application Details

Applications	ELISA, Sandwich ELISA
Recommended Dilutions	ELISA, Sandwich ELISA

Images

ELISA: Human Complement C3b ELISA Kit (Colorimetric) [NBP2-60553]

Human C3b Standard Curve





Novus Biologicals USA

10730 E. Briarwood Avenue
Centennial, CO 80112
USA
Phone: 303.730.1950
Toll Free: 1.888.506.6887
Fax: 303.730.1966
nb-customerservice@bio-techne.com

Bio-Techne Canada

21 Canmotor Ave
Toronto, ON M8Z 4E6
Canada
Phone: 905.827.6400
Toll Free: 855.668.8722
Fax: 905.827.6402
canada.inquires@bio-techne.com

Bio-Techne Ltd

19 Barton Lane
Abingdon Science Park
Abingdon, OX14 3NB, United Kingdom
Phone: (44) (0) 1235 529449
Free Phone: 0800 37 34 15
Fax: (44) (0) 1235 533420
info.EMEA@bio-techne.com

General Contact Information

www.novusbio.com
Technical Support: nb-technical@bio-
techne.com
Orders: nb-customerservice@bio-techne.com
General: novus@novusbio.com

Products Related to NBP2-60553

NBP2-62411	Complement C3b Native Protein
210-TA-005	TNF-alpha [Unconjugated]
NBP1-49635	Complement C3b Antibody (2B10B9B2) - BSA Free
M6000B-1	IL-6 [HRP]

Limitations

This product is for research use only and is not approved for use in humans or in clinical diagnosis. ELISA Kits are guaranteed for 6 months from date of receipt.

For more information on our 100% guarantee, please visit www.novusbio.com/guarantee

Earn gift cards/discounts by submitting a review: www.novusbio.com/reviews/submit/NBP2-60553

Earn gift cards/discounts by submitting a publication using this product:
www.novusbio.com/publications

