

# Product Datasheet

## Human Complement C3 ELISA Kit (Colorimetric) NBP2-60499

Unit Size: 1 Kit

Storage is content dependent.

[www.novusbio.com](http://www.novusbio.com)



[technical@novusbio.com](mailto:technical@novusbio.com)

Protocols, Publications, Related Products, Reviews, Research Tools and Images at:  
[www.novusbio.com/NBP2-60499](http://www.novusbio.com/NBP2-60499)

Updated 10/23/2024 v.20.1

Earn rewards for product  
reviews and publications.

Submit a publication at [www.novusbio.com/publications](http://www.novusbio.com/publications)

Submit a review at [www.novusbio.com/reviews/destination/NBP2-60499](http://www.novusbio.com/reviews/destination/NBP2-60499)



**NBP2-60499****Human Complement C3 ELISA Kit (Colorimetric)**

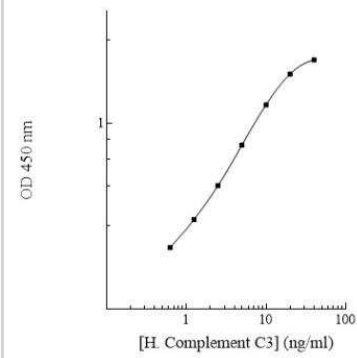
<b>Product Information</b>	
<b>Unit Size</b>	1 Kit
<b>Concentration</b>	Concentration is not relevant for this product. Please see the protocols for proper use of this product.
<b>Storage</b>	Storage is content dependent.
<b>Product Description</b>	
<b>Description</b>	This assay employs a quantitative enzyme immunoassay technique that measures the specified antigen in samples.
<b>Gene ID</b>	718
<b>Gene Symbol</b>	C3
<b>Species</b>	Human
<b>Standard Curve Range</b>	0.625-40 ng/ml (example only; lot dependent)
<b>Sensitivity</b>	0.5 ng/ml (example only; lot dependent)
<b>Inter Assay</b>	CV% < 10.20% (example only; lot dependent)
<b>Intra Assay</b>	CV% < 3.00% (example only; lot dependent)
<b>Assay Type</b>	Sandwich ELISA
<b>Spiking Recovery</b>	98.00% (example only; lot dependent)
<b>Suitable Sample Type</b>	Cell Culture, Urine, Saliva, Milk, CSF
<b>Product Application Details</b>	
<b>Applications</b>	ELISA, Sandwich ELISA
<b>Recommended Dilutions</b>	ELISA, Sandwich ELISA



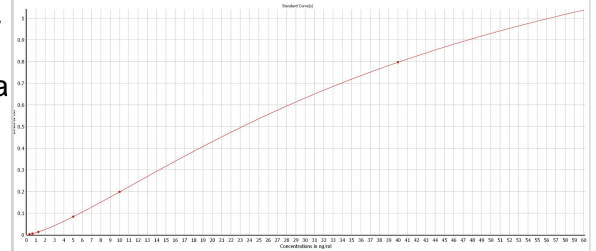
## Images

ELISA: Human Complement C3 ELISA Kit (Colorimetric) [NBP2-60499] - Standard curve.

Human Complement C3 Standard Curve



ELISA: Human Complement C3 ELISA Kit (Colorimetric) [NBP2-60499] - Standard Curve Reference. Tested on samples from cardiac patients, in duplicate. Standard curve can be stretched to 0.3125ng/ml. Image from a verified customer review.





### **Novus Biologicals USA**

10730 E. Briarwood Avenue  
Centennial, CO 80112  
USA  
Phone: 303.730.1950  
Toll Free: 1.888.506.6887  
Fax: 303.730.1966  
nb-customerservice@bio-techne.com

### **Bio-Techne Canada**

21 Canmotor Ave  
Toronto, ON M8Z 4E6  
Canada  
Phone: 905.827.6400  
Toll Free: 855.668.8722  
Fax: 905.827.6402  
canada.inquires@bio-techne.com

### **Bio-Techne Ltd**

19 Barton Lane  
Abingdon Science Park  
Abingdon, OX14 3NB, United Kingdom  
Phone: (44) (0) 1235 529449  
Free Phone: 0800 37 34 15  
Fax: (44) (0) 1235 533420  
info.EMEA@bio-techne.com

### **General Contact Information**

www.novusbio.com  
Technical Support: nb-technical@bio-techne.com  
Orders: nb-customerservice@bio-techne.com  
General: novus@novusbio.com

### **Products Related to NBP2-60499**

---

P3343-10ug	Recombinant Mouse Complement C3 GST (N-Term) Protein
210-TA-005	TNF-alpha [Unconjugated]
NB200-540	Complement C3 Antibody (11H9) - BSA Free
M6000B-1	IL-6 [HRP]

---

### **Limitations**

This product is for research use only and is not approved for use in humans or in clinical diagnosis. ELISA Kits are guaranteed for 6 months from date of receipt.

For more information on our 100% guarantee, please visit [www.novusbio.com/guarantee](http://www.novusbio.com/guarantee)

Earn gift cards/discounts by submitting a review: [www.novusbio.com/reviews/submit/NBP2-60499](http://www.novusbio.com/reviews/submit/NBP2-60499)

Earn gift cards/discounts by submitting a publication using this product:  
[www.novusbio.com/publications](http://www.novusbio.com/publications)

