

# Product Datasheet

## Human Fibrinogen ELISA Kit (Colorimetric) NBP2-60465

Unit Size: 1 Kit

Storage is content dependent.

[www.novusbio.com](http://www.novusbio.com)



[technical@novusbio.com](mailto:technical@novusbio.com)

Protocols, Publications, Related Products, Reviews, Research Tools and Images at:  
[www.novusbio.com/NBP2-60465](http://www.novusbio.com/NBP2-60465)

Updated 10/23/2024 v.20.1

Earn rewards for product  
reviews and publications.

Submit a publication at [www.novusbio.com/publications](http://www.novusbio.com/publications)

Submit a review at [www.novusbio.com/reviews/destination/NBP2-60465](http://www.novusbio.com/reviews/destination/NBP2-60465)



**NBP2-60465****Human Fibrinogen ELISA Kit (Colorimetric)**

| <b>Product Information</b> |  |
|----------------------------|--|
| <b>Unit Size</b>           | 1 Kit  |
| <b>Concentration</b>       | Concentration is not relevant for this product. Please see the protocols for proper use of this product. |
| <b>Storage</b>             | Storage is content dependent.  |

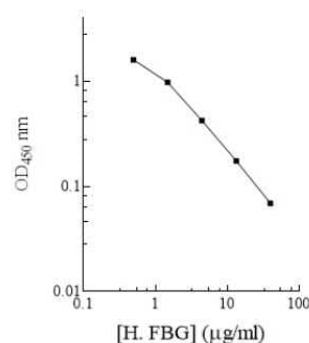
| <b>Product Description</b>  |  |
|-----------------------------|--|
| <b>Description</b>          | This assay employs a quantitative enzyme immunoassay technique that measures the specified antigen in samples. |
| <b>Gene ID</b>              | 2243   |
| <b>Gene Symbol</b>          | FGA  |
| <b>Species</b>              | Human  |
| <b>Standard Curve Range</b> | 0.494 - 40 ug/mL (example only; lot dependent)   |
| <b>Sensitivity</b>          | 0.45 ug/ml (example only; lot dependent)   |
| <b>Inter Assay</b>          | CV% < 9.90% (example only; lot dependent)  |
| <b>Intra Assay</b>          | CV% < 5.30% (example only; lot dependent)  |
| <b>Assay Type</b>           | Competitive ELISA  |
| <b>Spiking Recovery</b>     | 97.00% (example only; lot dependent)   |
| <b>Suitable Sample Type</b> | Plasma   |

| <b>Product Application Details</b> |       |
|------------------------------------|-------|
| <b>Applications</b>                | ELISA |
| <b>Recommended Dilutions</b>       | ELISA |

**Images**

ELISA: Human Fibrinogen ELISA Kit (Colorimetric) [NBP2-60465]

Human FBG Standard Curve





### **Novus Biologicals USA**

10730 E. Briarwood Avenue  
Centennial, CO 80112  
USA  
Phone: 303.730.1950  
Toll Free: 1.888.506.6887  
Fax: 303.730.1966  
nb-customerservice@bio-techne.com

### **Bio-Techne Canada**

21 Canmotor Ave  
Toronto, ON M8Z 4E6  
Canada  
Phone: 905.827.6400  
Toll Free: 855.668.8722  
Fax: 905.827.6402  
canada.inquires@bio-techne.com

### **Bio-Techne Ltd**

19 Barton Lane  
Abingdon Science Park  
Abingdon, OX14 3NB, United Kingdom  
Phone: (44) (0) 1235 529449  
Free Phone: 0800 37 34 15  
Fax: (44) (0) 1235 533420  
info.EMEA@bio-techne.com

### **General Contact Information**

www.novusbio.com  
Technical Support: nb-technical@bio-techne.com  
Orders: nb-customerservice@bio-techne.com  
General: novus@novusbio.com

### **Products Related to NBP2-60465**

---

|            |                                     |
|------------|-------------------------------------|
| NBP2-62459 | Fibrinogen Native Protein           |
| M6000B-1   | IL-6 [HRP]                          |
| AF4786     | Fibrinogen Antibody [Unconjugated]  |
| AF1356     | CD117/c-kit Antibody [Unconjugated] |

---

### **Limitations**

This product is for research use only and is not approved for use in humans or in clinical diagnosis. ELISA Kits are guaranteed for 6 months from date of receipt.

For more information on our 100% guarantee, please visit [www.novusbio.com/guarantee](http://www.novusbio.com/guarantee)

Earn gift cards/discounts by submitting a review: [www.novusbio.com/reviews/submit/NBP2-60465](http://www.novusbio.com/reviews/submit/NBP2-60465)

Earn gift cards/discounts by submitting a publication using this product:  
[www.novusbio.com/publications](http://www.novusbio.com/publications)

