

# Product Datasheet

## Lamin B Receptor Antibody (BB2SS3F3) NBP2-59947

Unit Size: 0.1 mg

Store at 4C short term. Aliquot and store at -20C long term. Avoid freeze-thaw cycles.

[www.novusbio.com](http://www.novusbio.com)



[technical@novusbio.com](mailto:technical@novusbio.com)

### Publications: 1

Protocols, Publications, Related Products, Reviews, Research Tools and Images at:  
[www.novusbio.com/NBP2-59947](http://www.novusbio.com/NBP2-59947)

Updated 7/30/2023 v.20.1

Earn rewards for product  
reviews and publications.

Submit a publication at [www.novusbio.com/publications](http://www.novusbio.com/publications)

Submit a review at [www.novusbio.com/reviews/destination/NBP2-59947](http://www.novusbio.com/reviews/destination/NBP2-59947)



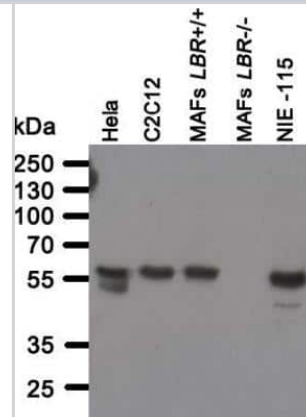
**NBP2-59947****Lamin B Receptor Antibody (BB2SS3F3)**

<b>Product Information</b>	
<b>Unit Size</b>	0.1 mg
<b>Concentration</b>	1 mg/ml
<b>Storage</b>	Store at 4C short term. Aliquot and store at -20C long term. Avoid freeze-thaw cycles.
<b>Clonality</b>	Monoclonal
<b>Clone</b>	BB2SS3F3
<b>Preservative</b>	0.02% Sodium Azide
<b>Isotype</b>	IgG1 Kappa
<b>Purity</b>	Protein A purified
<b>Buffer</b>	PBS
<b>Product Description</b>	
<b>Host</b>	Mouse
<b>Gene ID</b>	3930
<b>Gene Symbol</b>	LBR
<b>Species</b>	Human, Mouse
<b>Specificity/Sensitivity</b>	Specificity of human, mouse Lamin B Receptor antibody verified on a Protein Array containing target protein plus 383 other non-specific proteins.
<b>Immunogen</b>	GST fused to N-terminal fragment of human Lamin B Receptor (amino acids residues 1-211)
<b>Product Application Details</b>	
<b>Applications</b>	Western Blot, Immunocytochemistry/Immunofluorescence, Immunohistochemistry, Immunohistochemistry-Frozen, Immunohistochemistry-Paraffin
<b>Recommended Dilutions</b>	Western Blot 1:100 - 1:2000, Immunohistochemistry, Immunocytochemistry/Immunofluorescence 1:10 - 1:500, Immunohistochemistry-Paraffin 1:10 - 1:500, Immunohistochemistry-Frozen
<b>Application Notes</b>	ICC/IF: fixation with methanol fixation resulting in a brighter signal. Positive Control: C2C12, mouse fibroblast

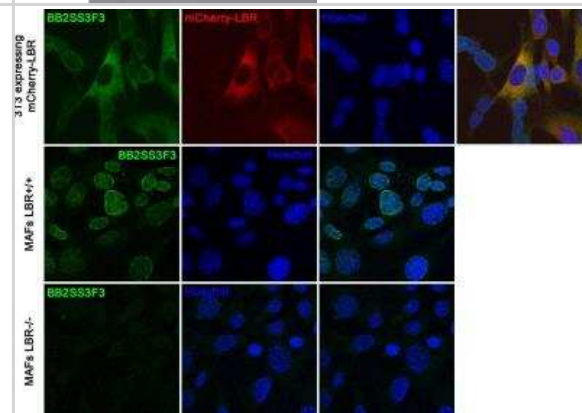


## Images

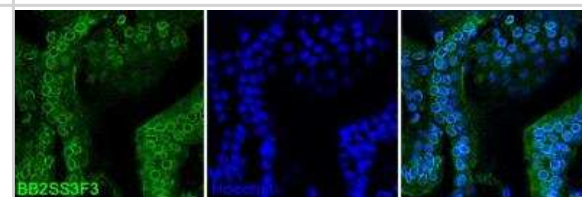
**Western Blot: Lamin B Receptor Antibody (BB2SS3F3) [NBP2-59947]** - Analysis of whole cell lysate from human (Hela) and mouse (C2C12, immortalized mouse adult fibroblasts (MAFs), NIE-115) cell lines were separated on SDS-PAGE gel, transferred to nitrocellulose membrane and blotted with BB2SS3F3 antibody. Both primary and secondary antibodies were diluted in blocking buffer (5% nonfat dry milk resuspended in 0.1% Tween and 1X PBS). The predicted molecular weight is 70.7kDa and 71.4kDa for human and mouse LBR respectively. The absence of a band in LBR null MAFs indicated that the antibody specifically recognizes LBR.



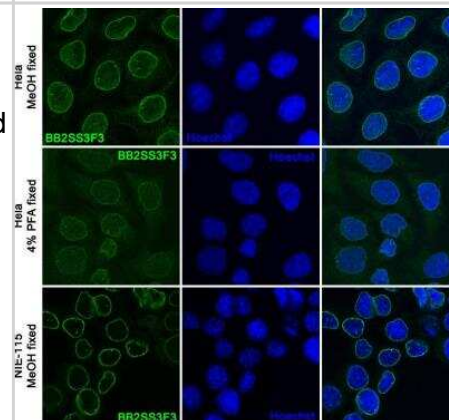
**Immunocytochemistry/Immunofluorescence: Lamin B Receptor Antibody (BB2SS3F3) [NBP2-59947]** - The antibody specifically detects LBR. Wild-type immortalized mouse adult fibroblast (MAFs LBR+/+) (upper panel) and LBR-null MEFs (MAFs LBR-/-) (lower panel) were methanol fixed and immunofluorescently stained with BB2SS3F3 mouse monoclonal antibody. In LBR-null MEFs there is a loss of BB2SS3F3 antibody staining signal indicating the LBR specific signal of the BB2SS3F3 antibody.



**Immunohistochemistry-Frozen: Lamin B Receptor Antibody (BB2SS3F3) [NBP2-59947]** - Staining of mouse small intestine. Small intestine from adult C57BL/6 mice was transferred to OCT compound and frozen in liquid nitrogen. Tissue cryosections were fixed in 10% neutral buffered formalin, permeabilized and stained with anti-LBR BB2SS3F3 antibody.



**Immunocytochemistry/Immunofluorescence: Lamin B Receptor Antibody (BB2SS3F3) [NBP2-59947]** - Confocal images of human (Hela) and mouse (NIE-115) cell lines immunofluorescently stained with BB2SS3F3 antibody. The BB2SS3F3 antibody works on cells fixed with 4% PFA and cold methanol with methanol fixation resulting in brighter signal of the antibody.



## Publications

Stixova L, Komurkova D, Svobodova Kovarikova A Et Al. Localization of METTL16 at the Nuclear Periphery and the Nucleolus Is Cell Cycle-Specific and METTL16 Interacts with Several Nucleolar Proteins Life 2021-07-08 [PMID: 34357041] (ICC/IF)



### **Novus Biologicals USA**

10730 E. Briarwood Avenue  
Centennial, CO 80112  
USA  
Phone: 303.730.1950  
Toll Free: 1.888.506.6887  
Fax: 303.730.1966  
nb-customerservice@bio-techne.com

### **Bio-Techne Canada**

21 Canmotor Ave  
Toronto, ON M8Z 4E6  
Canada  
Phone: 905.827.6400  
Toll Free: 855.668.8722  
Fax: 905.827.6402  
canada.inquires@bio-techne.com

### **Bio-Techne Ltd**

19 Barton Lane  
Abingdon Science Park  
Abingdon, OX14 3NB, United Kingdom  
Phone: (44) (0) 1235 529449  
Free Phone: 0800 37 34 15  
Fax: (44) (0) 1235 533420  
info.EMEA@bio-techne.com

### **General Contact Information**

www.novusbio.com  
Technical Support: nb-technical@bio-techne.com  
Orders: nb-customerservice@bio-techne.com  
General: novus@novusbio.com

### **Products Related to NBP2-59947**

NBP2-33376H	Blue Marker Antibody (6F4-F6) [HRP]
HAF007	Goat anti-Mouse IgG Secondary Antibody [HRP]
NB720-B	Rabbit anti-Mouse IgG (H+L) Secondary Antibody [Biotin]
NBP1-43319-0.5mg	Mouse IgG1 Kappa Isotype Control (P3.6.2.8.1)

### **Limitations**

This product is for research use only and is not approved for use in humans or in clinical diagnosis. Primary Antibodies are guaranteed for 1 year from date of receipt.

For more information on our 100% guarantee, please visit [www.novusbio.com/guarantee](http://www.novusbio.com/guarantee)

Earn gift cards/discounts by submitting a review: [www.novusbio.com/reviews/submit/NBP2-59947](http://www.novusbio.com/reviews/submit/NBP2-59947)

Earn gift cards/discounts by submitting a publication using this product:  
[www.novusbio.com/publications](http://www.novusbio.com/publications)

