

# Product Datasheet

## **SYNE1 Antibody (9F10) - BSA Free NBP2-59946**

Unit Size: 0.1 mg

Store at 4C short term. Aliquot and store at -20C long term. Avoid freeze-thaw cycles.

[www.novusbio.com](http://www.novusbio.com)



[technical@novusbio.com](mailto:technical@novusbio.com)

Protocols, Publications, Related Products, Reviews, Research Tools and Images at:  
[www.novusbio.com/NBP2-59946](http://www.novusbio.com/NBP2-59946)

Updated 6/4/2024 v.20.1

**Earn rewards for product  
reviews and publications.**

Submit a publication at [www.novusbio.com/publications](http://www.novusbio.com/publications)

Submit a review at [www.novusbio.com/reviews/destination/NBP2-59946](http://www.novusbio.com/reviews/destination/NBP2-59946)



**NBP2-59946**

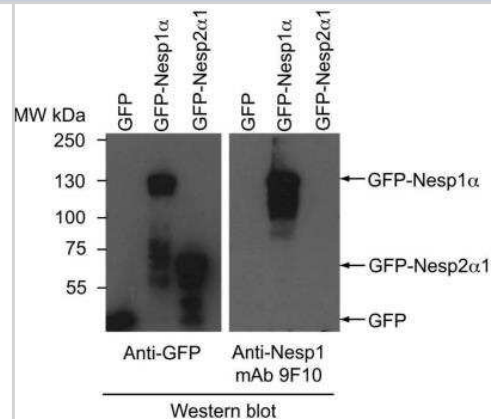
SYNE1 Antibody (9F10) - BSA Free

Product Information	
Unit Size	0.1 mg
Concentration	1 mg/ml
Storage	Store at 4C short term. Aliquot and store at -20C long term. Avoid freeze-thaw cycles.
Clonality	Monoclonal
Clone	9F10
Preservative	0.02% Sodium Azide
Isotype	IgG2b Kappa
Purity	Protein A purified
Buffer	PBS
Product Description	
Host	Mouse
Gene ID	23345
Gene Symbol	SYNE1
Species	Human, Mouse, Rat
Specificity/Sensitivity	Specificity of human, mouse, rat SYNE1 antibody verified on a Protein Array containing target protein plus 383 other non-specific proteins.
Immunogen	GST fused to residues 8,165-8,473 of mouse SYNE1
Product Application Details	
Applications	Western Blot, Immunocytochemistry/ Immunofluorescence
Recommended Dilutions	Western Blot 1:100 - 1:2000, Immunocytochemistry/ Immunofluorescence 1:10 - 1:500

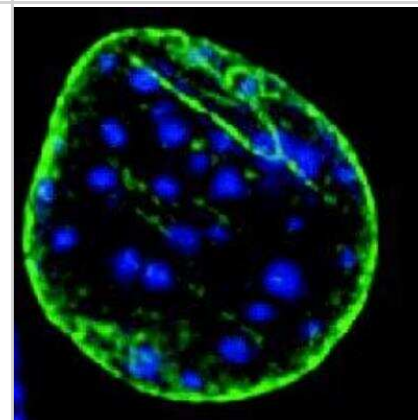


## Images

Western Blot: SYNE1 Antibody (9F10) [NBP2-59946] - HEK293 cells transiently expressing GFP alone, GFP fused to a small Nesp2 isoform (Nesp2a1) or to a Nesp1 isoform (Nesp1a). The small Nesp1 isoform contains the ~300 residue Nesp1 polypeptide that was employed in the immunogen. Total cell lysates were analyzed by western blot employing either a rabbit anti-GFP or culture supernatant from the anti-Nesp1 hybridoma clone (9F10). The antibody is specific for Nesp1.



Immunocytochemistry/Immunofluorescence: SYNE1 Antibody (9F10) [NBP2-59946] - C2C12 cell labeled with the 9F10 monoclonal antibody (green) raised against mouse Nesp1. DNA within the nucleus (blue) is revealed by DAPI-staining.





### **Novus Biologicals USA**

10730 E. Briarwood Avenue  
Centennial, CO 80112  
USA  
Phone: 303.730.1950  
Toll Free: 1.888.506.6887  
Fax: 303.730.1966  
nb-customerservice@bio-techne.com

### **Bio-Techne Canada**

21 Canmotor Ave  
Toronto, ON M8Z 4E6  
Canada  
Phone: 905.827.6400  
Toll Free: 855.668.8722  
Fax: 905.827.6402  
canada.inquires@bio-techne.com

### **Bio-Techne Ltd**

19 Barton Lane  
Abingdon Science Park  
Abingdon, OX14 3NB, United Kingdom  
Phone: (44) (0) 1235 529449  
Free Phone: 0800 37 34 15  
Fax: (44) (0) 1235 533420  
info.EMEA@bio-techne.com

### **General Contact Information**

www.novusbio.com  
Technical Support: nb-technical@bio-  
techne.com  
Orders: nb-customerservice@bio-techne.com  
General: novus@novusbio.com

### **Limitations**

This product is for research use only and is not approved for use in humans or in clinical diagnosis. Primary Antibodies are guaranteed for 1 year from date of receipt.

For more information on our 100% guarantee, please visit [www.novusbio.com/guarantee](http://www.novusbio.com/guarantee)

Earn gift cards/discounts by submitting a review: [www.novusbio.com/reviews/submit/NBP2-59946](http://www.novusbio.com/reviews/submit/NBP2-59946)

Earn gift cards/discounts by submitting a publication using this product:  
[www.novusbio.com/publications](http://www.novusbio.com/publications)

