

# Product Datasheet

## **GAPDH Antibody (CL3266) - BSA Free NBP2-59779**

Unit Size: 100 ul

Store at 4C short term. Aliquot and store at -20C long term. Avoid freeze-thaw cycles.

[www.novusbio.com](http://www.novusbio.com)



[technical@novusbio.com](mailto:technical@novusbio.com)

Protocols, Publications, Related Products, Reviews, Research Tools and Images at:  
[www.novusbio.com/NBP2-59779](http://www.novusbio.com/NBP2-59779)

Updated 9/9/2025 v.20.1

**Earn rewards for product  
reviews and publications.**

Submit a publication at [www.novusbio.com/publications](http://www.novusbio.com/publications)

Submit a review at [www.novusbio.com/reviews/destination/NBP2-59779](http://www.novusbio.com/reviews/destination/NBP2-59779)



**NBP2-59779**

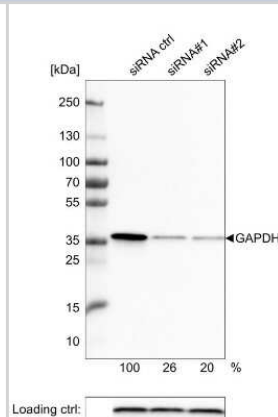
GAPDH Antibody (CL3266) - BSA Free

Product Information	
Unit Size	100 ul
Concentration	Concentrations vary lot to lot. See vial label for concentration. If unlisted please contact technical services.
Storage	Store at 4C short term. Aliquot and store at -20C long term. Avoid freeze-thaw cycles.
Clonality	Monoclonal
Clone	CL3266
Preservative	0.02% Sodium Azide
Isotype	IgG2a
Purity	Protein A purified
Buffer	PBS (pH 7.2) and 40% Glycerol
Target Molecular Weight	36 kDa
Product Description	
Description	Novus Biologicals Mouse GAPDH Antibody (CL3266) - BSA Free (NBP2-59779) is a monoclonal antibody validated for use in IHC, WB and ICC/IF. All Novus Biologicals antibodies are covered by our 100% guarantee.
Host	Mouse
Gene ID	2597
Gene Symbol	GAPDH
Species	Human
Reactivity Notes	Please note that this antibody is reactive to Mouse and derived from the same host, Mouse. Mouse-On-Mouse blocking reagent may be needed for IHC and ICC experiments to reduce high background signal. You can find these reagents under catalog numbers PK-2200-NB and MP-2400-NB. Please contact Technical Support if you have any questions
Immunogen	This antibody was developed using a recombinant protein derived from P04406, with the exact immunogen sequence remaining proprietary.
Product Application Details	
Applications	Western Blot, Immunohistochemistry-Paraffin, Immunocytochemistry/Immunofluorescence, Immunohistochemistry, Knockdown Validated
Recommended Dilutions	Western Blot 1 ug/ml, Immunohistochemistry 1:5000 - 1:10000, Immunocytochemistry/ Immunofluorescence 2-10 ug/ml, Immunohistochemistry-Paraffin 1:5000 - 1:10000, Knockdown Validated
Application Notes	For IHC-Paraffin, HIER pH 6 retrieval is recommended. ICC/IF Fixation/Permeabilization: PFA/Triton X-100.

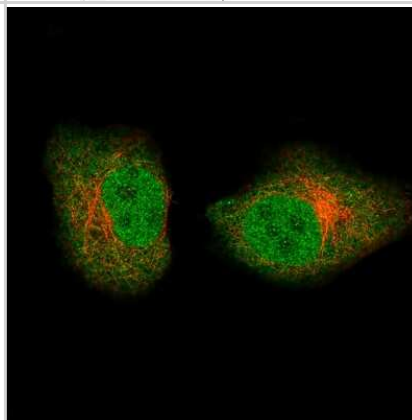


## Images

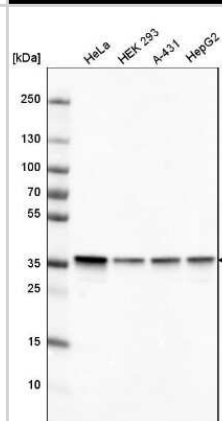
Western Blot: GAPDH Antibody (CL3266) [NBP2-59779] - GAPDH Antibody (2597) [NBP2-59779] - Theoretical molecular weight: 36 kDa. Analysis of extracts from U-251 cells, transfected with: control siRNA, target specific siRNA probe #1, target specific siRNA probe #2, using Anti-GAPDH monoclonal antibody. Downregulation of antibody signal confirms target specificity. Remaining % intensity, relative control lane, is indicated. Anti-PPIB monoclonal antibody was used as loading control.



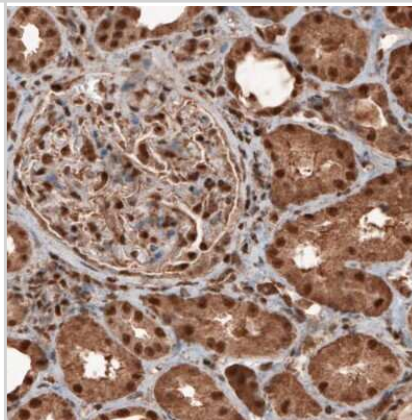
Immunocytochemistry/Immunofluorescence: GAPDH Antibody (CL3266) [NBP2-59779] - Staining of A549 cells using the Anti-GAPDH monoclonal antibody, showing specific staining in the nucleoplasm and cytosol in green. Microtubule and nuclear probes are visualized in red and blue, respectively (where available).



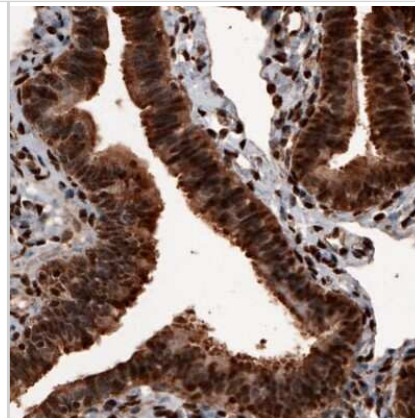
Western Blot: GAPDH Antibody (CL3266) [NBP2-59779] - GAPDH Antibody (2597) [NBP2-59779] - Analysis in human cell line HeLa, human cell line HEK 293, human cell line A-431 and human cell line HepG2. Theoretical molecular weight: 36 kDa.



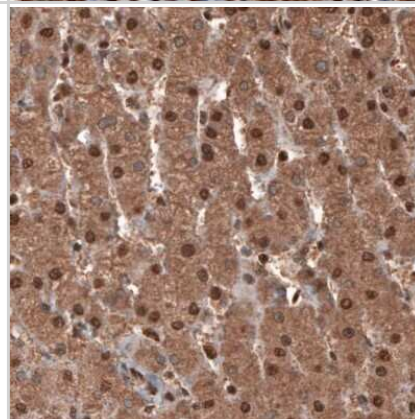
Immunohistochemistry: GAPDH Antibody (CL3266) [NBP2-59779] - Human kidney shows cytoplasmic and nuclear immunoreactivity in renal tubules and glomerular cells.



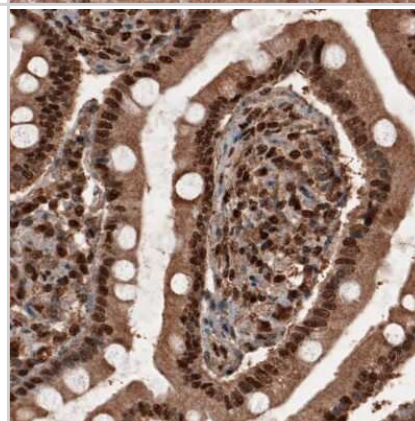
Immunohistochemistry: GAPDH Antibody (CL3266) [NBP2-59779] - Human fallopian tube shows cytoplasmic and nuclear positivity in the epithelial and connective tissue cells.



Immunohistochemistry: GAPDH Antibody (CL3266) [NBP2-59779] - Human liver shows cytoplasmic and nuclear immunoreactivity in hepatocytes.



Immunohistochemistry: GAPDH Antibody (CL3266) [NBP2-59779] - Human pancreas shows nuclear and cytoplasmic immunoreactivity in both endocrine and exocrine cells.





### **Novus Biologicals USA**

10730 E. Briarwood Avenue  
Centennial, CO 80112  
USA  
Phone: 303.730.1950  
Toll Free: 1.888.506.6887  
Fax: 303.730.1966  
nb-customerservice@bio-techne.com

### **Bio-Techne Canada**

21 Canmotor Ave  
Toronto, ON M8Z 4E6  
Canada  
Phone: 905.827.6400  
Toll Free: 855.668.8722  
Fax: 905.827.6402  
canada.inquires@bio-techne.com

### **Bio-Techne Ltd**

19 Barton Lane  
Abingdon Science Park  
Abingdon, OX14 3NB, United Kingdom  
Phone: (44) (0) 1235 529449  
Free Phone: 0800 37 34 15  
Fax: (44) (0) 1235 533420  
info.EMEA@bio-techne.com

### **General Contact Information**

www.novusbio.com  
Technical Support: nb-technical@bio-techne.com  
Orders: nb-customerservice@bio-techne.com  
General: novus@novusbio.com

### **Products Related to NBP2-59779**

---

NBP2-59779PEP	GAPDH Recombinant Protein Antigen
HAF007	Goat anti-Mouse IgG Secondary Antibody [HRP]
NB720-B	Rabbit anti-Mouse IgG (H+L) Secondary Antibody [Biotin]
NBP1-96778	Mouse IgG2a Isotype Control (M2A)

---

### **Limitations**

This product is for research use only and is not approved for use in humans or in clinical diagnosis. Primary Antibodies are guaranteed for 1 year from date of receipt.

For more information on our 100% guarantee, please visit [www.novusbio.com/guarantee](http://www.novusbio.com/guarantee)

Earn gift cards/discounts by submitting a review: [www.novusbio.com/reviews/submit/NBP2-59779](http://www.novusbio.com/reviews/submit/NBP2-59779)

Earn gift cards/discounts by submitting a publication using this product:  
[www.novusbio.com/publications](http://www.novusbio.com/publications)

