

Product Datasheet

Rhodopsin Antibody (4D2) NBP2-59690-100ug

Unit Size: 100 ug

Store at 4C short term. Aliquot and store at -20C long term. Avoid freeze-thaw cycles.

www.novusbio.com



technical@novusbio.com

Reviews: 1 Publications: 6

Protocols, Publications, Related Products, Reviews, Research Tools and Images at:
www.novusbio.com/NBP2-59690

Updated 4/24/2024 v.20.1

**Earn rewards for product
reviews and publications.**

Submit a publication at www.novusbio.com/publications

Submit a review at www.novusbio.com/reviews/destination/NBP2-59690



NBP2-59690-100ug

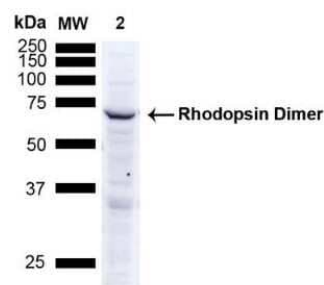
Rhodopsin Antibody (4D2)

Product Information	
Unit Size	100 ug
Concentration	1 mg/ml
Storage	Store at 4C short term. Aliquot and store at -20C long term. Avoid freeze-thaw cycles.
Clonality	Monoclonal
Clone	4D2
Preservative	0.09% Sodium Azide
Isotype	IgG1
Purity	Protein G purified
Buffer	PBS (pH 7.4), 50% Glycerol
Target Molecular Weight	40 kDa
Product Description	
Host	Mouse
Gene ID	6010
Gene Symbol	RHO
Species	Amphibian, Avian, Fish, Mammal, Zebrafish
Reactivity Notes	Extinct Spiny Shark (<i>Acanthodes bridgei</i>). Zebrafish reactivity reported from a verified customer review.
Specificity/Sensitivity	Binds specifically to the N-terminus of Rhodopsin. Does not detect Rhodopsin in invertebrates.
Immunogen	Bovine Rhodopsin
Product Application Details	
Applications	Western Blot, ELISA, Immunocytochemistry/ Immunofluorescence, Immunohistochemistry, Immunohistochemistry-Frozen, Immunoprecipitation
Recommended Dilutions	Western Blot 1:1000, ELISA, Immunohistochemistry 1:1000, Immunocytochemistry/ Immunofluorescence, Immunoprecipitation, Immunohistochemistry-Frozen
Application Notes	1 ug/mL of this antibody was sufficient for detection of rhodopsin in 10 ug of rat eye lysate by colorimetric immunoblot analysis using Goat anti-mouse IgG:HRP as the secondary antibody. Rhodopsin antibody validated for IHC-Fr from a verified customer review.

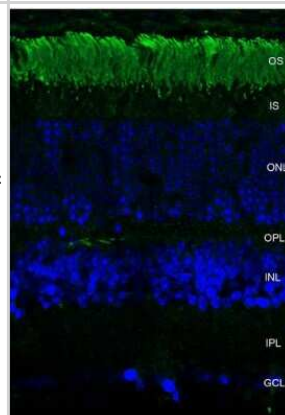


Images

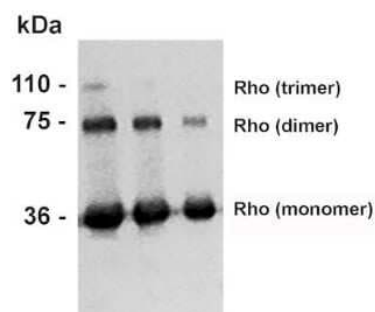
Western Blot: Rhodopsin Antibody (4D2) [NBP2-59690] - Western Blot analysis of Human A549 cells showing detection of ~38.9kDa Rhodopsin protein using Mouse Anti-Rhodopsin Monoclonal Antibody, Clone 4D2 (NBP2-59690). Lane 1: MW ladder. Lane 2: Human A549 Cells 15 ug). Load: 15 ug. Block: 5% Skim Milk Powder in TBST. Primary Antibody: Mouse Anti-Rhodopsin Monoclonal Antibody (NBP2-59690) at 1:1000 for 2.5 hours at RT with shaking . Secondary Antibody: Goat anti-mouse IgG:HRP at 1:1000 for 1 hour at RT with shaking . Color Development: Chemiluminescent for HRP (Moss) for 5 min in RT. Predicted/Observed Size: ~38.9kDa. Other Band(s): Band appears at ~75 kDa indicating detection of the Rhodopsin dimer.



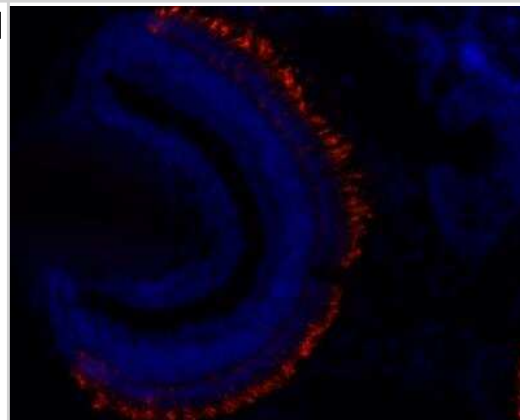
Immunohistochemistry: Rhodopsin Antibody (4D2) [NBP2-59690] - Immunohistochemistry analysis using Mouse Anti-Rhodopsin Monoclonal Antibody, Clone 4D2 (NBP2-59690). Tissue: retina. Species: Mouse. Primary Antibody: Mouse Anti-Rhodopsin Monoclonal Antibody (NBP2-59690) at 1:1000. Secondary Antibody: FITC Goat Anti-Mouse (green). Counterstain: DAPI (blue) nuclear stain. Localization: Staining of photoreceptor outer segment (OS). Other layers of the retina: IS inner segment; ONL outer nuclear layer; OPL outer plexiform layer; INL inner nuclear layer; IPL inner plexiform layer; GCL ganglion cell layer..



Western Blot: Rhodopsin Antibody (4D2) [NBP2-59690] - Western Blot analysis of Bovine photoreceptor membranes showing detection of Rhodopsin protein using Mouse Anti-Rhodopsin Monoclonal Antibody, Clone 4D2 (NBP2-59690). Lane 1: MW ladder. Lane 2: 10 ug. Lane 3: 5 ug. Lane 4: 2.5 ug.. Primary Antibody: Mouse Anti-Rhodopsin Monoclonal Antibody (NBP2-59690) at 1:1000.



Immunohistochemistry-Frozen: Rhodopsin Antibody (4D2) [NBP2-59690] - Zebrafish retina (outer nuclear layer). PFA and methanol fixed 7 um sections. Rhodopsin antibody O/N incubation at 1:500. IHC-Fr image submitted by a verified customer review.



Publications

Attia K Roles of PIKfyve in the Retina: A Zebrafish Study Thesis 2023-01-01

Stemerdink M, Broekman S, Peters T et al. Generation and Characterization of a Zebrafish Model for ADGRV1-Associated Retinal Dysfunction Using CRISPR/Cas9 Genome Editing Technology Cells 2023-06-10 [PMID: 37371069] (Zebrafish)

Schellens R, Broekman S, Peters T et al. A protein domain-oriented approach to expand the opportunities of therapeutic exon skipping for USH2A-associated retinitis pigmentosa Molecular Therapy - Nucleic Acids 2023-05-01 [PMID: 37313440] (IHC-Fr, Zebrafish)

Reurink J, de Vrieze E, Li CHZ et al. Scrutinizing pathogenicity of the USH2A c.2276G > T; p.(Cys759Phe) variant NPJ genomic medicine 2022-06-07 [PMID: 35672333] (IF/IHC, Zebrafish)

Kamel, SM;Broekman, S;Tessadori, F;van Wijk, E;Bakkers, J; The zebrafish cohesin protein Sgo1 is required for cardiac function and eye development Developmental dynamics : an official publication of the American Association of Anatomists [PMID: 35275424] (Human)

Petersen ERB, Olsen DA, Christensen H et al. Rhodopsin in plasma from patients with diabetic retinopathy - development and validation of digital ELISA by Single Molecule Array (Simoa) technology. J. Immunol. Methods. 2017-04-05 [PMID: 28390926] (ELISA)





Novus Biologicals USA

10730 E. Briarwood Avenue
Centennial, CO 80112
USA
Phone: 303.730.1950
Toll Free: 1.888.506.6887
Fax: 303.730.1966
nb-customerservice@bio-techne.com

Bio-Techne Canada

21 Canmotor Ave
Toronto, ON M8Z 4E6
Canada
Phone: 905.827.6400
Toll Free: 855.668.8722
Fax: 905.827.6402
canada.inquires@bio-techne.com

Bio-Techne Ltd

19 Barton Lane
Abingdon Science Park
Abingdon, OX14 3NB, United Kingdom
Phone: (44) (0) 1235 529449
Free Phone: 0800 37 34 15
Fax: (44) (0) 1235 533420
info.EMEA@bio-techne.com

General Contact Information

www.novusbio.com
Technical Support: nb-technical@bio-techne.com
Orders: nb-customerservice@bio-techne.com
General: novus@novusbio.com

Products Related to NBP2-59690-100ug

HAF007	Goat anti-Mouse IgG Secondary Antibody [HRP]
NB720-B	Rabbit anti-Mouse IgG (H+L) Secondary Antibody [Biotin]
NBP1-97005-0.5mg	Mouse IgG1 Isotype Control (MG1)
NBP2-55553PEP	Rhodopsin Recombinant Protein Antigen

Limitations

This product is for research use only and is not approved for use in humans or in clinical diagnosis. Primary Antibodies are guaranteed for 1 year from date of receipt.

For more information on our 100% guarantee, please visit www.novusbio.com/guarantee

Earn gift cards/discounts by submitting a review: www.novusbio.com/reviews/submit/NBP2-59690

Earn gift cards/discounts by submitting a publication using this product:
www.novusbio.com/publications

