

Product Datasheet

S100A1 Antibody (S100A1/1942) - Azide and BSA Free NBP2-59617

Unit Size: 100 ug

Store at -20 to -80C. Avoid freeze-thaw cycles.

www.novusbio.com



technical@novusbio.com

Protocols, Publications, Related Products, Reviews, Research Tools and Images at:
www.novusbio.com/NBP2-59617

Updated 7/16/2024 v.20.1

Earn rewards for product
reviews and publications.

Submit a publication at www.novusbio.com/publications

Submit a review at www.novusbio.com/reviews/destination/NBP2-59617



NBP2-59617

S100A1 Antibody (S100A1/1942) - Azide and BSA Free

Product Information	
Unit Size	100 ug
Concentration	1.0 mg/ml
Storage	Store at -20 to -80C. Avoid freeze-thaw cycles.
Clonality	Monoclonal
Clone	S100A1/1942
Preservative	No Preservative
Isotype	IgG1 Kappa
Purity	Protein A or G purified
Buffer	10 mM PBS

Product Description	
Description	<p>Human Chromosome Location:1q21.3 Positive Control: A431 or HT-29 Cells. Brain or Melanoma</p> <p>1.0 mg/ml of antibody purified from Bioreactor Concentrate by Protein A/G. Prepared in 10mM PBS WITHOUT BSA & azide. Also available at 200 ug/ml WITH BSA & azide (NBP2-59615).</p> <p>Antibody with azide - store at 2 to 8C. Antibody without azide - store at -20 to -80C.</p>
Host	Mouse
Gene ID	6271
Gene Symbol	S100A1
Species	Human
Marker	Melanoma Marker
Specificity/Sensitivity	<p>The specificity of this monoclonal antibody to its intended target was validated by HuProt™ Array, containing more than 19,000, full-length human proteins. S100 belongs to the family of calcium binding proteins. S100A and S100B proteins are two members of the S100 family. S100A is composed of an alpha and a beta chain whereas S100B is composed of two beta chains. This antibody is specific against an epitope located on the alpha-chain (i.e. in S-100A and S-100B) but not on the beta-chain of S-100 (i.e. in S-100B). This antibody can be used to localize S-100A in various tissue sections. S-100 protein has been found in normal melanocytes, Langerhans cells, histiocytes, chondrocytes, lipocytes, skeletal and cardiac muscle, epithelial and myoepithelial cells of the breast, salivary and sweat glands. Neoplasms derived from these cells also express S-100 protein. Almost all malignant melanomas and cases of histiocytosis X are positive for S-100 protein.</p>
Immunogen	Recombinant human full-length S100A1 protein (Uniprot: P23297)

Product Application Details	
Applications	Immunohistochemistry, Immunohistochemistry-Paraffin, Protein Array
Recommended Dilutions	Immunohistochemistry, Immunohistochemistry-Paraffin, Protein Array

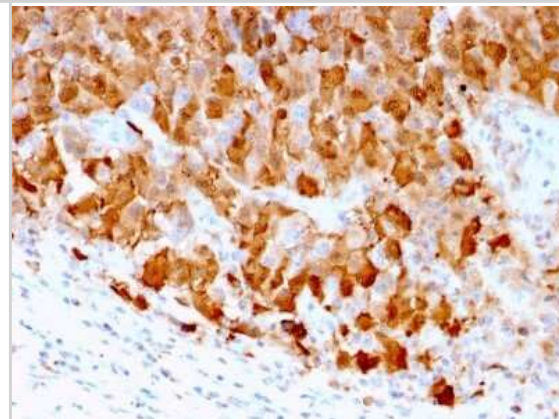


Application Notes

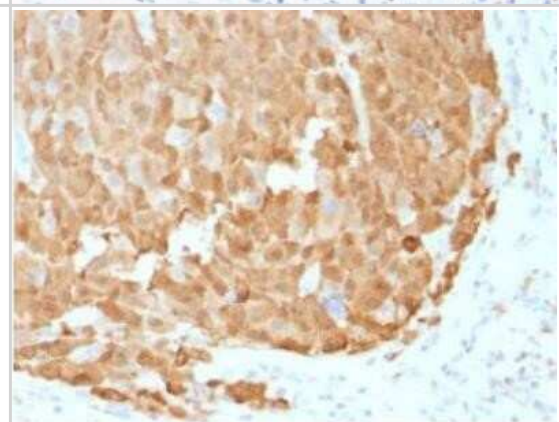
Immunohistochemistry (Formalin-fixed or Frozen): 1-2ug/ml for 30 minutes at RT. Staining of formalin-fixed tissues requires heating tissue sections in 10mM Tris with 1mM EDTA, pH 9.0, for 45 min at 95C followed by cooling at RT for 20 minutes.
Optimal dilution for a specific application should be determined.

Images

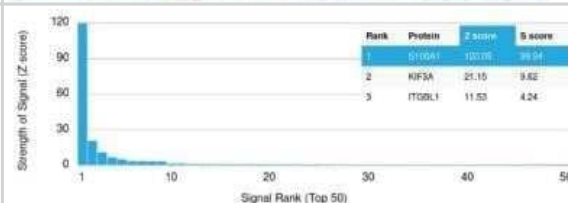
Immunohistochemistry-Paraffin: S100A1 Antibody (S100A1/1942) - Azide and BSA Free [NBP2-59617] - Formalin-fixed, paraffin-embedded human Melanoma stained with S100A1 Antibody (S100A1/1942).



Immunohistochemistry-Paraffin: S100A1 Antibody (S100A1/1942) - Azide and BSA Free [NBP2-59617] - Formalin-fixed, paraffin-embedded human Melanoma stained with S100A1 Mouse Monoclonal Antibody (S100A1/1942)



Protein Array: S100A1 Antibody (S100A1/1942) - Azide and BSA Free [NBP2-59617] - Analysis of Protein Array containing more than 19,000 full-length human proteins. Z- and S- Score: The Z-score represents the strength of a signal that an antibody (in combination with a fluorescently-tagged anti-IgG secondary) produces when binding to a particular protein on the HuProt array. Z-scores are described in units of standard deviations above the mean value of all signals generated on that array. If targets on HuProt are arranged in descending order of the Z-score, the S-score is the difference between the Z-score. S-score therefore represents the relative target specificity of an Ab to its intended target. An Ab is considered to specific to its intended target, if the Ab has an S-score of at least 2.5.





Novus Biologicals USA

10730 E. Briarwood Avenue
Centennial, CO 80112
USA
Phone: 303.730.1950
Toll Free: 1.888.506.6887
Fax: 303.730.1966
nb-customerservice@bio-techne.com

Bio-Techne Canada

21 Canmotor Ave
Toronto, ON M8Z 4E6
Canada
Phone: 905.827.6400
Toll Free: 855.668.8722
Fax: 905.827.6402
canada.inquires@bio-techne.com

Bio-Techne Ltd

19 Barton Lane
Abingdon Science Park
Abingdon, OX14 3NB, United Kingdom
Phone: (44) (0) 1235 529449
Free Phone: 0800 37 34 15
Fax: (44) (0) 1235 533420
info.EMEA@bio-techne.com

General Contact Information

www.novusbio.com
Technical Support: nb-technical@bio-techne.com
Orders: nb-customerservice@bio-techne.com
General: novus@novusbio.com

Products Related to NBP2-59617

HAF007	Goat anti-Mouse IgG Secondary Antibody [HRP]
NB720-B	Rabbit anti-Mouse IgG (H+L) Secondary Antibody [Biotin]
NBP1-43319-0.5mg	Mouse IgG1 Kappa Isotype Control (P3.6.2.8.1)
NBP1-72335-0.1mg	Recombinant Mouse S100A1 His Protein

Limitations

This product is for research use only and is not approved for use in humans or in clinical diagnosis. Primary Antibodies are guaranteed for 1 year from date of receipt.

For more information on our 100% guarantee, please visit www.novusbio.com/guarantee

Earn gift cards/discounts by submitting a review: www.novusbio.com/reviews/submit/NBP2-59617

Earn gift cards/discounts by submitting a publication using this product:
www.novusbio.com/publications

