

Product Datasheet

Recombinant Human Protein Phosphatase 1C gamma His Protein NBP2-59582-5ug

Unit Size: 5 ug

Store at 4C short term. Aliquot and store at -20C long term. Avoid freeze-thaw cycles.

www.novusbio.com



technical@novusbio.com

Protocols, Publications, Related Products, Reviews, Research Tools and Images at:
www.novusbio.com/NBP2-59582

Updated 7/21/2022 v.20.1

Earn rewards for product
reviews and publications.

Submit a publication at www.novusbio.com/publications

Submit a review at www.novusbio.com/reviews/destination/NBP2-59582



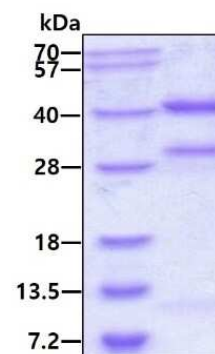
NBP2-59582-5ug**Recombinant Human Protein Phosphatase 1C gamma His Protein**

| Product Information | |
|------------------------------------|--|
| Unit Size | 5 ug |
| Concentration | 0.25 mg/ml |
| Storage | Store at 4C short term. Aliquot and store at -20C long term. Avoid freeze-thaw cycles. |
| Preservative | No Preservative |
| Purity | >85%, by SDS-PAGE |
| Buffer | 20 mM Tris-HCl buffer (pH8.0), 50% glycerol, 0.2 M NaCl, 2 mM DTT |
| Target Molecular Weight | 39.1 kDa |
| Product Description | |
| Description | <p>A bioactive recombinant protein with a N-Terminal His-tag and corresponding to the amino acids 1-323 of Human Protein Phosphatase 1C gamma</p> <p>Source: <i>E.coli</i></p> <p>Amino Acid Sequence: MGSSHHHHHH SSGLVPRGSH MADLDKLNID SIIQRLLEVR GSKPGKNVQL QENEIRGLCL KSREIFLSQP ILLELEAPLK ICGDIHGQYY DLLRLFYGG FPESNYLFL GDYVDRGKQS LETICLLLAY KIKYPENFFL LRGNHECASI NRIYGFYDEC KRRYNIKLWK TFTDCFNCLP IAAIVDEKIF CCHGGLSPDL QSMEQIRRM RPTDVPDQGL LCDLLWSDPD KDVLGWGEND RGVSTFTGAE VVAKFLHKHD LDICRAHQV VEDGYEFFAK RQLVTLFSAP NYCGEFDNAG AMMSVDETLM CSFQILKPAE KKKPNATRPV TPPRGMITKQ AKK</p> |
| Gene ID | 5501 |
| Gene Symbol | PPP1CC |
| Species | Human |
| Details of Functionality | Specific activity is > 700 units/mg, and is defined as the amount of enzyme that hydrolyze 1.0 nmole of p-nitrophenyl phosphate (pNPP) per minute at pH 7.5 at 37C. |
| Product Application Details | |
| Applications | SDS-Page, Enzyme Activity |
| Recommended Dilutions | SDS-Page, Enzyme Activity |



Images

SDS-Page: Recombinant Human Protein Phosphatase 1C gamma His Protein [NBP2-59582] - 3ug by SDS-PAGE under reducing condition and visualized by coomassie blue stain.





Novus Biologicals USA

10730 E. Briarwood Avenue
Centennial, CO 80112
USA
Phone: 303.730.1950
Toll Free: 1.888.506.6887
Fax: 303.730.1966
nb-customerservice@bio-techne.com

Bio-Techne Canada

21 Canmotor Ave
Toronto, ON M8Z 4E6
Canada
Phone: 905.827.6400
Toll Free: 855.668.8722
Fax: 905.827.6402
canada.inquires@bio-techne.com

Bio-Techne Ltd

19 Barton Lane
Abingdon Science Park
Abingdon, OX14 3NB, United Kingdom
Phone: (44) (0) 1235 529449
Free Phone: 0800 37 34 15
Fax: (44) (0) 1235 533420
info.EMEA@bio-techne.com

General Contact Information

www.novusbio.com
Technical Support: nb-technical@bio-
techne.com
Orders: nb-customerservice@bio-techne.com
General: novus@novusbio.com

Error: Subreport could not be shown.

Limitations

This product is for research use only and is not approved for use in humans or in clinical diagnosis. This product is guaranteed for 1 year from date of receipt.

For more information on our 100% guarantee, please visit www.novusbio.com/guarantee

Earn gift cards/discounts by submitting a review: www.novusbio.com/reviews/submit/NBP2-59582

Earn gift cards/discounts by submitting a publication using this product:
www.novusbio.com/publications

