

Product Datasheet

Creatine Kinase BB Antibody (8E4) - BSA Free NBP2-59462-100ul

Unit Size: 100 ul

Store at 4C short term. Aliquot and store at -20C long term. Avoid freeze-thaw cycles.

www.novusbio.com



technical@novusbio.com

Publications: 1

Protocols, Publications, Related Products, Reviews, Research Tools and Images at:
www.novusbio.com/NBP2-59462

Updated 9/9/2025 v.20.1

Earn rewards for product
reviews and publications.

Submit a publication at www.novusbio.com/publications

Submit a review at www.novusbio.com/reviews/destination/NBP2-59462



NBP2-59462-100ul

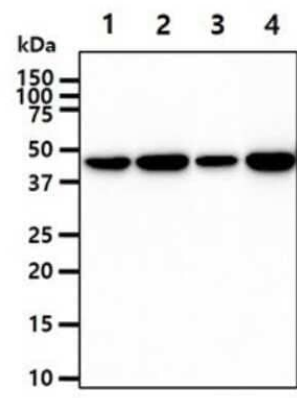
Creatine Kinase BB Antibody (8E4) - BSA Free

Product Information	
Unit Size	100 ul
Concentration	1 mg/ml
Storage	Store at 4C short term. Aliquot and store at -20C long term. Avoid freeze-thaw cycles.
Clonality	Monoclonal
Clone	8E4
Preservative	0.02% Sodium Azide
Isotype	IgG2a Kappa
Purity	Protein A purified
Buffer	PBS (pH 7.4), 10% Glycerol
Product Description	
Description	Novus Biologicals Mouse Creatine Kinase BB Antibody (8E4) - BSA Free (NBP2-59462) is a monoclonal antibody validated for use in WB, ELISA, Flow and ICC/IF. Anti-Creatine Kinase BB Antibody: Cited in 1 publication. All Novus Biologicals antibodies are covered by our 100% guarantee.
Host	Mouse
Gene ID	1152
Gene Symbol	CKB
Species	Human
Immunogen	Recombinant human Creatine Kinase BB (1-381aa) purified from E. coli
Product Application Details	
Applications	Western Blot, ELISA, Flow Cytometry, Immunocytochemistry/ Immunofluorescence
Recommended Dilutions	Western Blot 1:1000, Flow Cytometry 1:10-1:1063, ELISA, Immunocytochemistry/ Immunofluorescence 1:100

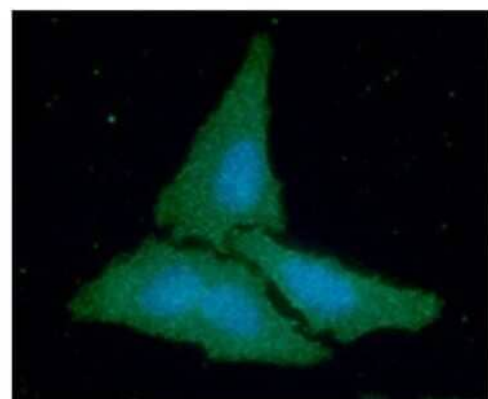


Images

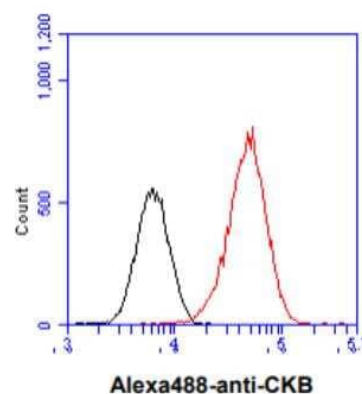
Western Blot: Creatine Kinase B Antibody (8E4) [NBP2-59462] - Lane 1: HeLa cell lysates, Lane 2: 293T cell lysates, Lane 2: K562 cell lysates, Lane 2: LnCap cell lysates



Immunocytochemistry/Immunofluorescence: Creatine Kinase B Antibody (8E4) [NBP2-59462] - Analysis of CKB in HeLa cells line, stained with DAPI (Blue) for nucleus staining and monoclonal anti-human CKB antibody (1:100) with goat anti-mouse IgG-Alexa fluor 488 conjugate (Green).



Flow Cytometry: Creatine Kinase B Antibody (8E4) [NBP2-59462] - Analysis of CKB in HeLa cell line, staining at 2-5ug for 1x10⁶ cells (red line). The secondary antibody used goat anti-mouse IgG Alexa fluor 488 conjugate. Isotype control antibody was mouse IgG (black line).



Publications

Wu K, Yan M, Liu T et al. Creatine kinase B suppresses ferroptosis by phosphorylating GPX4 through a moonlighting function Nature cell biology 2023-05-01 [PMID: 37156912]



Novus Biologicals USA

10730 E. Briarwood Avenue
Centennial, CO 80112
USA
Phone: 303.730.1950
Toll Free: 1.888.506.6887
Fax: 303.730.1966
nb-customerservice@bio-techne.com

Bio-Techne Canada

21 Canmotor Ave
Toronto, ON M8Z 4E6
Canada
Phone: 905.827.6400
Toll Free: 855.668.8722
Fax: 905.827.6402
canada.inquires@bio-techne.com

Bio-Techne Ltd

19 Barton Lane
Abingdon Science Park
Abingdon, OX14 3NB, United Kingdom
Phone: (44) (0) 1235 529449
Free Phone: 0800 37 34 15
Fax: (44) (0) 1235 533420
info.EMEA@bio-techne.com

General Contact Information

www.novusbio.com
Technical Support: nb-technical@bio-techne.com
Orders: nb-customerservice@bio-techne.com
General: novus@novusbio.com

Products Related to NBP2-59462-100ul

HAF007	Goat anti-Mouse IgG Secondary Antibody [HRP]
NB720-B	Rabbit anti-Mouse IgG (H+L) Secondary Antibody [Biotin]
NBP1-96981-0.5mg	Mouse IgG2a Kappa Isotype Control (M2AK)
NBP1-84460PEP	Creatine Kinase BB Recombinant Protein Antigen

Limitations

This product is for research use only and is not approved for use in humans or in clinical diagnosis. Primary Antibodies are guaranteed for 1 year from date of receipt.

For more information on our 100% guarantee, please visit www.novusbio.com/guarantee

Earn gift cards/discounts by submitting a review: www.novusbio.com/reviews/submit/NBP2-59462

Earn gift cards/discounts by submitting a publication using this product:
www.novusbio.com/publications

