

Product Datasheet

PEDFR/PNPLA2/ATGL Antibody (AT18E6) - BSA Free NBP2-59390-100ul

Unit Size: 100 ul

Store at 4C short term. Aliquot and store at -20C long term. Avoid freeze-thaw cycles.

www.novusbio.com



technical@novusbio.com

Protocols, Publications, Related Products, Reviews, Research Tools and Images at:
www.novusbio.com/NBP2-59390

Updated 9/9/2025 v.20.1

**Earn rewards for product
reviews and publications.**

Submit a publication at www.novusbio.com/publications

Submit a review at www.novusbio.com/reviews/destination/NBP2-59390



NBP2-59390-100ul

PEDFR/PNPLA2/ATGL Antibody (AT18E6) - BSA Free

Product Information

Unit Size	100 ul
Concentration	1 mg/ml
Storage	Store at 4C short term. Aliquot and store at -20C long term. Avoid freeze-thaw cycles.
Clonality	Monoclonal
Clone	AT18E6
Preservative	0.02% Sodium Azide
Isotype	IgG2b Kappa
Purity	Protein G purified
Buffer	PBS (pH 7.4), 10% Glycerol

Product Description

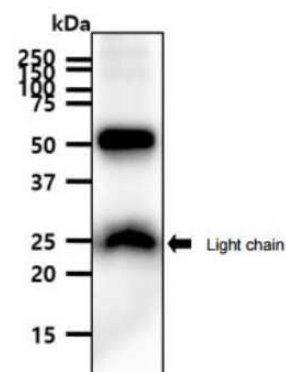
Description	Novus Biologicals Mouse PEDFR/PNPLA2/ATGL Antibody (AT18E6) - BSA Free (NBP2-59390) is a monoclonal antibody validated for use in WB, ELISA, Flow and ICC/IF. All Novus Biologicals antibodies are covered by our 100% guarantee.
Host	Mouse
Gene ID	57104
Gene Symbol	PNPLA2
Species	Human
Immunogen	Recombinant human PEDFR/PNPLA2/ATGL (30-504aa) purified from E. coli

Product Application Details

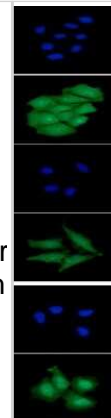
Applications	Western Blot, ELISA, Flow Cytometry, Immunocytochemistry/ Immunofluorescence
Recommended Dilutions	Western Blot 1:1000, Flow Cytometry 1:10-1:1000, ELISA, Immunocytochemistry/ Immunofluorescence 1:100

Images

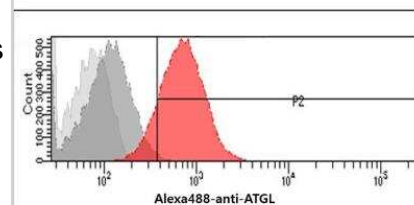
Western Blot: PEDF R/PNPLA2/ATGL Antibody (AT18E6) [NBP2-59390]
 - The mouse adipose tissue lysate (40ug) were resolved by SDS-PAGE, transferred to PVDF membrane and probed with anti-human ATGL antibody (1:1000). Proteins were visualized using a goat anti-mouse secondary antibody conjugated to HRP and an ECL detection system



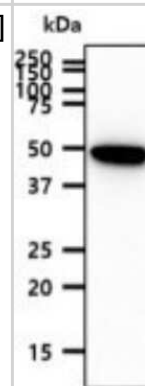
Immunocytochemistry/Immunofluorescence: PEDF R/PNPLA2/ATGL Antibody (AT18E6) [NBP2-59390] - Analysis of ATGL in Hep3B cells line, stained with DAPI (Blue) for nucleus staining and monoclonal anti-human ATGL antibody (1:100) with goat anti-mouse IgG-Alexa fluor 488 conjugate (Green). Analysis of ATGL in HeLa cells line, stained with DAPI (Blue) for nucleus staining and monoclonal anti-human ATGL antibody (1:100) with goat anti-mouse IgG-Alexa fluor 488 conjugate (Green). Analysis of ATGL in A549 cells line, stained with DAPI (Blue) for nucleus staining and monoclonal anti-human ATGL antibody (1:100) with goat anti-mouse IgG-Alexa fluor 488 conjugate (Green).



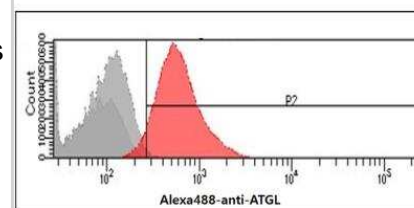
Flow Cytometry: PEDFR/PNPLA2/ATGL Antibody (AT18E6) [NBP2-59390] - Flow cytometry analysis of ATGL in HeLa cells. The cell was stained with NBP2-59390 at 2-5ug for 1×10^6 cells (red). A Goat anti mouse IgG (Alexa fluor 488) was used as the secondary antibody. Mouse monoclonal IgG was used as the isotype control (dark gray), cells without incubation with primary and secondary antibody was used as the negative control (light gray).



Western Blot: PEDF R/PNPLA2/ATGL Antibody (AT18E6) [NBP2-59390] - Analysis in A431 cell lysates (40ug), resolved by SDS-PAGE.



Flow Cytometry: PEDFR/PNPLA2/ATGL Antibody (AT18E6) [NBP2-59390] - Flow cytometry analysis of ATGL in Hep3B cells. The cell was stained with NBP2-59390 at 2-5ug for 1×10^6 cells (red). A Goat anti mouse IgG (Alexa fluor 488) was used as the secondary antibody. Mouse monoclonal IgG was used as the isotype control (dark gray), cells without incubation with primary and secondary antibody was used as the negative control (light gray).





Novus Biologicals USA

10730 E. Briarwood Avenue
Centennial, CO 80112
USA
Phone: 303.730.1950
Toll Free: 1.888.506.6887
Fax: 303.730.1966
nb-customerservice@bio-techne.com

Bio-Techne Canada

21 Canmotor Ave
Toronto, ON M8Z 4E6
Canada
Phone: 905.827.6400
Toll Free: 855.668.8722
Fax: 905.827.6402
canada.inquires@bio-techne.com

Bio-Techne Ltd

19 Barton Lane
Abingdon Science Park
Abingdon, OX14 3NB, United Kingdom
Phone: (44) (0) 1235 529449
Free Phone: 0800 37 34 15
Fax: (44) (0) 1235 533420
info.EMEA@bio-techne.com

General Contact Information

www.novusbio.com
Technical Support: nb-technical@bio-techne.com
Orders: nb-customerservice@bio-techne.com
General: novus@novusbio.com

Products Related to NBP2-59390-100ul

HAF007	Goat anti-Mouse IgG Secondary Antibody [HRP]
NB720-B	Rabbit anti-Mouse IgG (H+L) Secondary Antibody [Biotin]
NBP1-43317-0.5mg	Mouse IgG2b Kappa Light Chain Isotype Control (MG2b)
NBP3-21380PEP	PEDFR/PNPLA2/ATGL Recombinant Protein Antigen

Limitations

This product is for research use only and is not approved for use in humans or in clinical diagnosis. Primary Antibodies are guaranteed for 1 year from date of receipt.

For more information on our 100% guarantee, please visit www.novusbio.com/guarantee

Earn gift cards/discounts by submitting a review: www.novusbio.com/reviews/submit/NBP2-59390

Earn gift cards/discounts by submitting a publication using this product:
www.novusbio.com/publications

