

# Product Datasheet

## Nitrotryptophan Antibody (4F8) NBP2-59355

Unit Size: 100 ug

Store at -20C.

[www.novusbio.com](http://www.novusbio.com)



[technical@novusbio.com](mailto:technical@novusbio.com)

Protocols, Publications, Related Products, Reviews, Research Tools and Images at:  
[www.novusbio.com/NBP2-59355](http://www.novusbio.com/NBP2-59355)

Updated 1/13/2025 v.20.1

Earn rewards for product  
reviews and publications.

Submit a publication at [www.novusbio.com/publications](http://www.novusbio.com/publications)

Submit a review at [www.novusbio.com/reviews/destination/NBP2-59355](http://www.novusbio.com/reviews/destination/NBP2-59355)

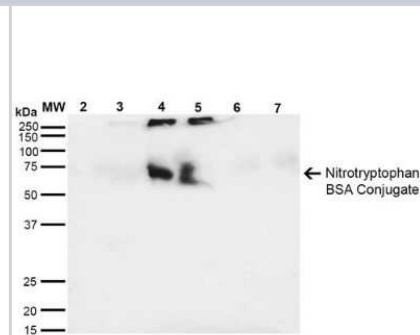


**NBP2-59355****Nitrotryptophan Antibody (4F8)**

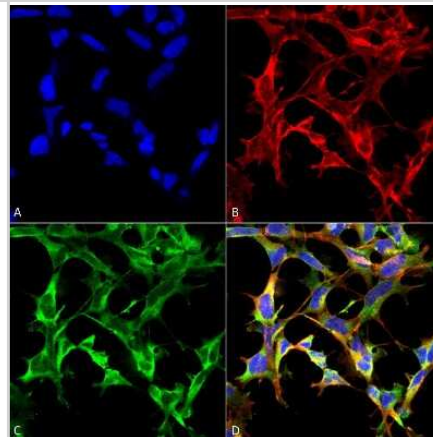
<b>Product Information</b>	
<b>Unit Size</b>	100 ug
<b>Concentration</b>	Please see the vial label for concentration. If unlisted please contact technical services.
<b>Storage</b>	Store at -20C.
<b>Clonality</b>	Monoclonal
<b>Clone</b>	4F8
<b>Preservative</b>	0.09% Sodium Azide
<b>Isotype</b>	IgG2b
<b>Purity</b>	Protein G purified
<b>Buffer</b>	PBS (pH 7.4), 50% Glycerol
<b>Product Description</b>	
<b>Host</b>	Mouse
<b>Species</b>	Non-species specific
<b>Specificity/Sensitivity</b>	Specific for 6-Nitrotryptophan modified proteins. Does not cross-react with 7-Ketocholesterol modified proteins.
<b>Immunogen</b>	Synthetic 6-Nitrotryptophan modified Keyhole Limpet Hemocyanin (KLH).
<b>Product Application Details</b>	
<b>Applications</b>	Western Blot, ELISA, Immunocytochemistry/ Immunofluorescence, Immunohistochemistry
<b>Recommended Dilutions</b>	Western Blot 1:1000, ELISA 1:1000, Immunohistochemistry 1:100, Immunocytochemistry/ Immunofluorescence 1:50

## Images

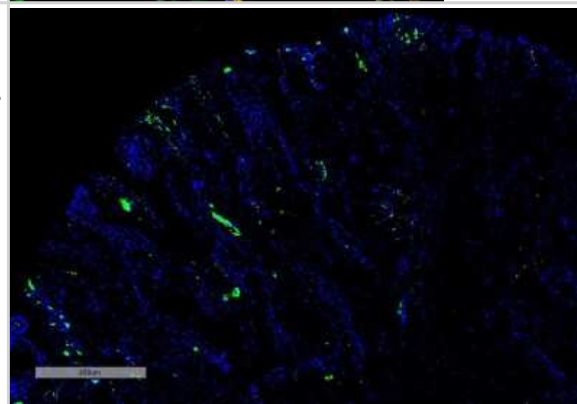
**Western Blot: Nitrotryptophan Antibody (4F8) [NBP2-59355]** - Western Blot analysis of 6-Nitrotryptophan-BSA Conjugate showing detection of 67 kDa Nitrotryptophan protein using Mouse Anti-Nitrotryptophan Monoclonal Antibody, Clone 4F8 (NBP2-59355). Lane 1: Molecular Weight Ladder (MW). Lane 2: BSA (0.5 ug). Lane 3: BSA (1 ug). Lane 4: 6-Nitrotryptophan-BSA (0.5 ug). Lane 5: 6-Nitrotryptophan-BSA (1 ug). Lane 6: 7-Ketocholesterol-BSA (0.5 ug). Lane 7: 7-Ketocholesterol-BSA (1 ug). Block: 5% Skim Milk in TBST. Primary Antibody: Mouse Anti-Nitrotryptophan Monoclonal Antibody (NBP2-59355) at 1:1000 for 2 hours at RT. Secondary Antibody: Goat Anti-Mouse IgG: HRP at 1:2000 for 60 min at RT. Color Development: Luminol for 1 min. Predicted/Observed Size: 67 kDa.



**Immunocytochemistry/Immunofluorescence: Nitrotryptophan Antibody (4F8) [NBP2-59355]** - Immunocytochemistry/Immunofluorescence analysis using Mouse Anti-Nitrotryptophan Monoclonal Antibody, Clone 4F8 (NBP2-59355). Tissue: Embryonic kidney epithelial cell line (HEK293). Species: Human. Fixation: 5% Formaldehyde for 5 min. Primary Antibody: Mouse Anti-Nitrotryptophan Monoclonal Antibody (NBP2-59355) at 1:50 for 30-60 min at RT. Secondary Antibody: Goat Anti-Mouse Alexa Fluor 488 at 1:1500 for 30-60 min at RT. Counterstain: Phalloidin Alexa Fluor 633 F-Actin stain; DAPI (blue) nuclear stain at 1:250, 1:50000 for 30-60 min at RT. Localization: Cytoplasmic. Magnification: 20X (2X Zoom). (A) DAPI (blue) nuclear stain. (B) Phalloidin Alexa Fluor 633 F-Actin stain. (C) Nitrotryptophan Antibody. (D) Composite. Courtesy of: Dr. Robert Burke, University of Victoria.



**Immunohistochemistry: Nitrotryptophan Antibody (4F8) [NBP2-59355]** - Immunohistochemistry analysis using Mouse Anti-Nitrotryptophan Monoclonal Antibody, Clone 4F8 (NBP2-59355). Tissue: Thyroid Cancer. Species: Human. Primary Antibody: Mouse Anti-Nitrotryptophan Monoclonal Antibody (NBP2-59355) at 1:100 for Overnight at 4C, then 30 min at 37C. Secondary Antibody: Goat Anti-Mouse IgG (H+L): FITC for 45 min at 37C. Counterstain: DAPI for 3 min at RT. Magnification: 5X.





### **Novus Biologicals USA**

10730 E. Briarwood Avenue  
Centennial, CO 80112  
USA  
Phone: 303.730.1950  
Toll Free: 1.888.506.6887  
Fax: 303.730.1966  
nb-customerservice@bio-techne.com

### **Bio-Techne Canada**

21 Canmotor Ave  
Toronto, ON M8Z 4E6  
Canada  
Phone: 905.827.6400  
Toll Free: 855.668.8722  
Fax: 905.827.6402  
canada.inquires@bio-techne.com

### **Bio-Techne Ltd**

19 Barton Lane  
Abingdon Science Park  
Abingdon, OX14 3NB, United Kingdom  
Phone: (44) (0) 1235 529449  
Free Phone: 0800 37 34 15  
Fax: (44) (0) 1235 533420  
info.EMEA@bio-techne.com

### **General Contact Information**

www.novusbio.com  
Technical Support: nb-technical@bio-techne.com  
Orders: nb-customerservice@bio-techne.com  
General: novus@novusbio.com

### **Limitations**

This product is for research use only and is not approved for use in humans or in clinical diagnosis. Primary Antibodies are guaranteed for 1 year from date of receipt.

For more information on our 100% guarantee, please visit [www.novusbio.com/guarantee](http://www.novusbio.com/guarantee)

Earn gift cards/discounts by submitting a review: [www.novusbio.com/reviews/submit/NBP2-59355](http://www.novusbio.com/reviews/submit/NBP2-59355)

Earn gift cards/discounts by submitting a publication using this product:  
[www.novusbio.com/publications](http://www.novusbio.com/publications)

