

Product Datasheet

Dibromo-tyrosine Antibody (6G3) NBP2-59350

Unit Size: 100 ug

Store at -20C.

www.novusbio.com



technical@novusbio.com

Protocols, Publications, Related Products, Reviews, Research Tools and Images at:
www.novusbio.com/NBP2-59350

Updated 1/13/2025 v.20.1

Earn rewards for product
reviews and publications.

Submit a publication at www.novusbio.com/publications

Submit a review at www.novusbio.com/reviews/destination/NBP2-59350



NBP2-59350**Dibromo-tyrosine Antibody (6G3)****Product Information**

Unit Size	100 ug
Concentration	Please see the vial label for concentration. If unlisted please contact technical services.
Storage	Store at -20C.
Clonality	Monoclonal
Clone	6G3
Preservative	0.09% Sodium Azide
Isotype	IgG1
Purity	Protein G purified
Buffer	PBS (pH 7.4), 50% Glycerol

Product Description

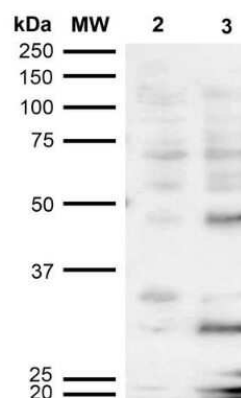
Host	Mouse
Species	Non-species specific
Specificity/Sensitivity	Specific for 3,5-Dibromo-tyrosine. Does not cross-react with Nitrotyrosine.
Immunogen	Synthetic 3,5-Dibromotyrosine conjugated to Keyhole Limpet Hemocyanin (KLH).

Product Application Details

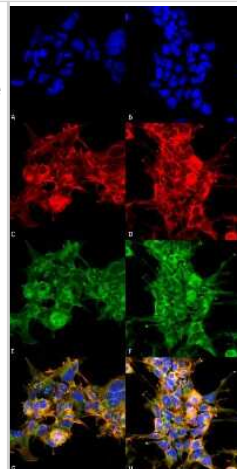
Applications	Western Blot, ELISA, Immunocytochemistry/ Immunofluorescence, Immunohistochemistry
Recommended Dilutions	Western Blot 1:1000, ELISA 1:1000, Immunohistochemistry 1:100, Immunocytochemistry/ Immunofluorescence 1:50

Images

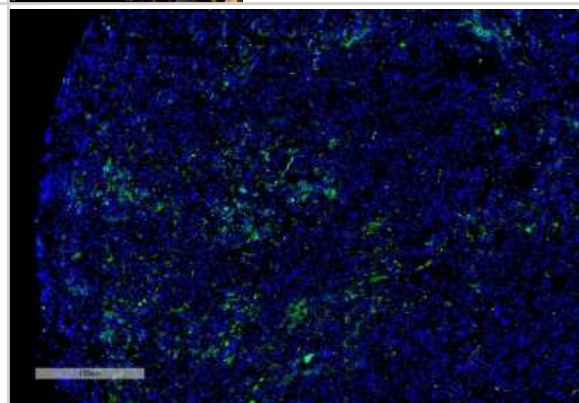
Western Blot: Dibromo-tyrosine Antibody (6G3) [NBP2-59350] - Western Blot analysis of Human Cervical cancer cell line (HeLa) lysate showing detection of Dibromo-tyrosine protein using Mouse Anti-Dibromo-tyrosine Monoclonal Antibody, Clone 6G3 (NBP2-59350). Lane 1: Molecular Weight Ladder (MW). Lane 2: HeLa cell lysate. Lane 3: H₂O₂ treated HeLa cell lysate. Load: 12 ug. Block: 5% Skim Milk in TBST. Primary Antibody: Mouse Anti-Dibromo-tyrosine Monoclonal Antibody (NBP2-59350) at 1:1000 for 2 hours at RT. Secondary Antibody: Goat Anti-Mouse IgG: HRP at 1:2000 for 60 min at RT. Color Development: ECL solution for 5 min in RT.



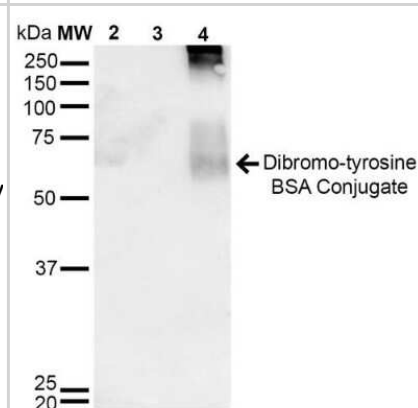
Immunocytochemistry/Immunofluorescence: Dibromo-tyrosine Antibody (6G3) [NBP2-59350] - Immunocytochemistry/Immunofluorescence analysis using Mouse Anti-Dibromo-tyrosine Monoclonal Antibody, Clone 6G3 (NBP2-59350). Tissue: Embryonic kidney epithelial cell line (HEK293). Species: Human. Fixation: 5% Formaldehyde for 5 min. Primary Antibody: Mouse Anti-Dibromo-tyrosine Monoclonal Antibody (NBP2-59350) at 1:50 for 30-60 min at RT. Secondary Antibody: Goat Anti-Mouse Alexa Fluor 488 at 1:1500 for 30-60 min at RT. Counterstain: Phalloidin Alexa Fluor 633 F-Actin stain; DAPI (blue) nuclear stain at 1:250, 1:50000 for 30-60 min at RT. Magnification: 20X (2X Zoom). (A,C,E,G) - Untreated. (B,D,F,H) - Cells cultured overnight with 50 M H₂O₂. (A,B) DAPI (blue) nuclear stain. (C,D) Phalloidin Alexa Fluor 633 F-Actin stain. (E,F) Dibromo-tyrosine Antibody. (G,H) Composite. Courtesy of: Dr. Robert Burke, University of Victoria.



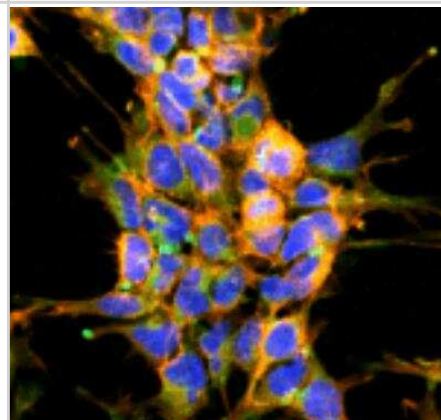
Immunohistochemistry: Dibromo-tyrosine Antibody (6G3) [NBP2-59350] - Immunohistochemistry analysis using Mouse Anti-Dibromotyrosine Monoclonal Antibody, Clone 6G3 (NBP2-59350). Tissue: Liver Cancer. Species: Human. Primary Antibody: Mouse Anti-Dibromotyrosine Monoclonal Antibody (NBP2-59350) at 1:100 for Overnight at 4C, then 30 min at 37C. Secondary Antibody: Goat Anti-Mouse IgG (H+L): FITC for 45 min at 37C. Counterstain: DAPI for 3 min at RT. Magnification: 5X.



Western Blot: Dibromo-tyrosine Antibody (6G3) [NBP2-59350] - Western Blot analysis of 3, 5-Dibromotyrosine-BSA Conjugate showing detection of 67 kDa Dibromo-tyrosine protein using Mouse Anti-Dibromo-tyrosine Monoclonal Antibody, Clone 6G3 (NBP2-59350). Lane 1: Molecular Weight Ladder (MW). Lane 2: BSA. Lane 3: Nitrosylated-BSA. Lane 4: Dibromotyrosine-BSA. Load: 1 ug. Block: 5% Skim Milk in TBST. Primary Antibody: Mouse Anti-Dibromo-tyrosine Monoclonal Antibody (NBP2-59350) at 1:1000 for 2 hours at RT. Secondary Antibody: Goat Anti-Mouse IgG: HRP at 1:2000 for 60 min at RT. Color Development: ECL solution for 5 min in RT. Predicted/Observed Size: 67 kDa.



Immunocytochemistry/Immunofluorescence: Dibromo-tyrosine Antibody (6G3) [NBP2-59350] - Tissue: Embryonic kidney cells (HEK293). Species: Human. Fixation: 5% Formaldehyde for 5 min. Primary Antibody: Mouse Anti-Dibromo-tyrosine Monoclonal Antibody at 1:50 for 30-60 min at RT. Secondary Antibody: Goat Anti-Mouse Alexa Fluor 488 at 1:1500 for 30-60 min at RT. Counterstain: Phalloidin Alexa Fluor 633 F-Actin stain; DAPI (blue) nuclear stain at 1:250, 1:50000 for 30-60 min at RT. Magnification: 20X (2X Zoom). Courtesy of: Dr. Robert Burke, University of Victoria.





Novus Biologicals USA

10730 E. Briarwood Avenue
Centennial, CO 80112
USA
Phone: 303.730.1950
Toll Free: 1.888.506.6887
Fax: 303.730.1966
nb-customerservice@bio-techne.com

Bio-Techne Canada

21 Canmotor Ave
Toronto, ON M8Z 4E6
Canada
Phone: 905.827.6400
Toll Free: 855.668.8722
Fax: 905.827.6402
canada.inquires@bio-techne.com

Bio-Techne Ltd

19 Barton Lane
Abingdon Science Park
Abingdon, OX14 3NB, United Kingdom
Phone: (44) (0) 1235 529449
Free Phone: 0800 37 34 15
Fax: (44) (0) 1235 533420
info.EMEA@bio-techne.com

General Contact Information

www.novusbio.com
Technical Support: nb-technical@bio-
techne.com
Orders: nb-customerservice@bio-techne.com
General: novus@novusbio.com

Limitations

This product is for research use only and is not approved for use in humans or in clinical diagnosis. Primary Antibodies are guaranteed for 1 year from date of receipt.

For more information on our 100% guarantee, please visit www.novusbio.com/guarantee

Earn gift cards/discounts by submitting a review: www.novusbio.com/reviews/submit/NBP2-59350

Earn gift cards/discounts by submitting a publication using this product:
www.novusbio.com/publications

