

Product Datasheet

TCP1 alpha Antibody (91a)

NBP2-59347

Unit Size: 100 ug

Store at -20C.

www.novusbio.com



technical@novusbio.com

Protocols, Publications, Related Products, Reviews, Research Tools and Images at:
www.novusbio.com/NBP2-59347

Updated 7/18/2022 v.20.1

Earn rewards for product
reviews and publications.

Submit a publication at www.novusbio.com/publications

Submit a review at www.novusbio.com/reviews/destination/NBP2-59347



NBP2-59347

TCP1 alpha Antibody (91a)

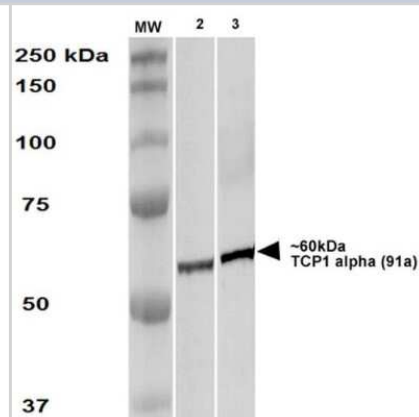
Product Information	
Unit Size	100 ug
Concentration	Please see the vial label for concentration. If unlisted please contact technical services.
Storage	Store at -20C.
Clonality	Monoclonal
Clone	91a
Preservative	0.1% Sodium Azide
Isotype	IgG2a
Purity	Protein G purified
Buffer	PBS pH7.4, 50% glycerol

Product Description	
Host	Rat
Gene ID	6950
Gene Symbol	TCP1
Species	Human, Mouse, Rat, Porcine, Bovine, Canine, C. elegans, Drosophila, Guinea Pig, Hamster, Monkey, Rabbit, Yeast
Specificity/Sensitivity	Detects 60kDa. Also detects 92kDa. Cross reactivity with human HSP60 has been observed with this in immunoblot analysis. Reacts weakly with <i>Saccharomyces cerevisiae</i> , consistent with the epitope sequence being AKLRS (instead of AKLRA). In <i>C. elegans</i> , it reacts with TCP1 alpha and another CCT subunit. In plants, it recognizes TCP1 of <i>Pisum sativum</i> , and the sequence of <i>Arabidopsis thaliana</i> TCP1 over the region of the epitope AKLRA. It has also been shown that it reacts with a subunit of a specialized chaperonin which folds phytochrome.
Immunogen	Recombinant Mouse TCP1 alpha protein fragment (carboxy terminal region).

Product Application Details	
Applications	Western Blot, Flow Cytometry, Immunocytochemistry/Immunofluorescence, Immunoprecipitation
Recommended Dilutions	Western Blot 1:100 - 1:2000, Flow Cytometry 1:10 - 1:1000, Immunocytochemistry/Immunofluorescence 1:10 - 1:500, Immunoprecipitation 1:10 - 1:500

Images

Western Blot: TCP1 alpha Antibody (91a) [NBP2-59347] - Western Blot analysis of Human A431 and HEK293 cell lysates showing detection of TCP1 alpha protein using Rat Anti-TCP1 alpha Monoclonal Antibody, Clone 91a (NBP2-59347). Primary Antibody: Rat Anti-TCP1 alpha Monoclonal Antibody (NBP2-59347) at 1:1000.





Novus Biologicals USA

10730 E. Briarwood Avenue
Centennial, CO 80112
USA
Phone: 303.730.1950
Toll Free: 1.888.506.6887
Fax: 303.730.1966
nb-customerservice@bio-techne.com

Bio-Techne Canada

21 Canmotor Ave
Toronto, ON M8Z 4E6
Canada
Phone: 905.827.6400
Toll Free: 855.668.8722
Fax: 905.827.6402
canada.inquires@bio-techne.com

Bio-Techne Ltd

19 Barton Lane
Abingdon Science Park
Abingdon, OX14 3NB, United Kingdom
Phone: (44) (0) 1235 529449
Free Phone: 0800 37 34 15
Fax: (44) (0) 1235 533420
info.EMEA@bio-techne.com

General Contact Information

www.novusbio.com
Technical Support: nb-technical@bio-techne.com
Orders: nb-customerservice@bio-techne.com
General: novus@novusbio.com

Limitations

This product is for research use only and is not approved for use in humans or in clinical diagnosis. Primary Antibodies are guaranteed for 1 year from date of receipt.

For more information on our 100% guarantee, please visit www.novusbio.com/guarantee

Earn gift cards/discounts by submitting a review: www.novusbio.com/reviews/submit/NBP2-59347

Earn gift cards/discounts by submitting a publication using this product:
www.novusbio.com/publications

