

Product Datasheet

Scn2b Antibody (S395-68) NBP2-59317

Unit Size: 100 ug

Store at -20C.

www.novusbio.com



technical@novusbio.com

Protocols, Publications, Related Products, Reviews, Research Tools and Images at:
www.novusbio.com/NBP2-59317

Updated 6/28/2022 v.20.1

Earn rewards for product
reviews and publications.

Submit a publication at www.novusbio.com/publications

Submit a review at www.novusbio.com/reviews/destination/NBP2-59317



NBP2-59317

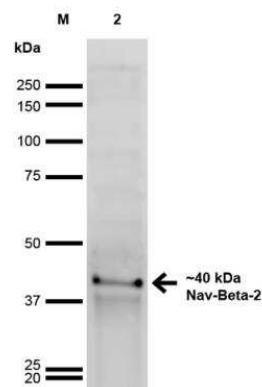
Scn2b Antibody (S395-68)

Product Information	
Unit Size	100 ug
Concentration	Please see the vial label for concentration. If unlisted please contact technical services.
Storage	Store at -20C.
Clonality	Monoclonal
Clone	S395-68
Preservative	0.1% Sodium Azide
Isotype	IgG2b
Purity	Protein G purified
Buffer	PBS (pH 7.4), 50% Glycerol
Product Description	
Host	Mouse
Gene ID	6327
Gene Symbol	SCN2B
Species	Human, Mouse, Rat
Specificity/Sensitivity	Detects 40kDa. Does not cross-react with NavBeta1, Navbeta3, or Navbeta4.
Immunogen	Fusion protein amino acids 1-215 (full-length) of mouse Nav beta2
Product Application Details	
Applications	Western Blot, Immunocytochemistry/Immunofluorescence, Immunohistochemistry
Recommended Dilutions	Western Blot 1:100 - 1:2000, Immunohistochemistry 1:10 - 1:500, Immunocytochemistry/Immunofluorescence 1:10 - 1:500

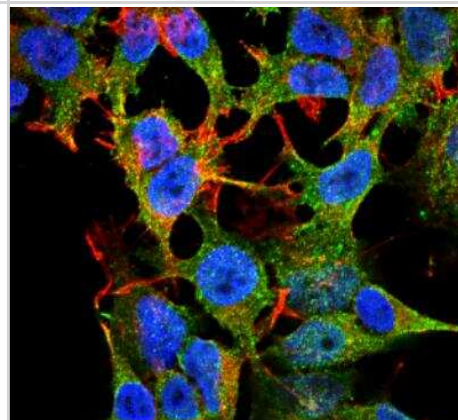


Images

Western Blot: Scn2b Antibody (S395-68) [NBP2-59317] - Analysis of Rat Brain showing detection of ~40 kDa Nav-Beta-2 protein using Mouse Anti-Nav-Beta-2 Monoclonal Antibody, Clone S395-68. Lane 1: MW Ladder. Lane 2: Rat Brain. Load: 20 ug . Block: 2% GE Healthcare Blocker for 1 hour at RT. Primary Antibody: Mouse Anti-Nav-Beta-2 Monoclonal Antibody at 1:1000 for 16 hours at 4 degrees C. Secondary Antibody: Goat Anti-Mouse IgG: HRP at 1:200 for 1 hour at RT. Color Development: ECL solution for 6 min at RT. Predicted/Observed Size: ~40 kDa.



Immunocytochemistry/Immunofluorescence: Scn2b Antibody (S395-68) [NBP2-59317] - Tissue: Neuroblastoma cell line SK-N-BE. Species: Human. Fixation: 4% Formaldehyde for 15 min at RT. Primary Antibody: Mouse Anti-Nav beta 2 Monoclonal Antibody at 1:100 for 60 min at RT. Secondary Antibody: Goat Anti-Mouse ATTO 488 at 1:100 for 60 min at RT. Counterstain: Phalloidin Texas Red F-Actin stain; DAPI (blue) nuclear stain at 1:1000, 1:5000 for 60min RT, 5min RT. Localization: Membrane. Magnification: 60X.





Novus Biologicals USA

10730 E. Briarwood Avenue
Centennial, CO 80112
USA
Phone: 303.730.1950
Toll Free: 1.888.506.6887
Fax: 303.730.1966
nb-customerservice@bio-techne.com

Bio-Techne Canada

21 Canmotor Ave
Toronto, ON M8Z 4E6
Canada
Phone: 905.827.6400
Toll Free: 855.668.8722
Fax: 905.827.6402
canada.inquires@bio-techne.com

Bio-Techne Ltd

19 Barton Lane
Abingdon Science Park
Abingdon, OX14 3NB, United Kingdom
Phone: (44) (0) 1235 529449
Free Phone: 0800 37 34 15
Fax: (44) (0) 1235 533420
info.EMEA@bio-techne.com

General Contact Information

www.novusbio.com
Technical Support: nb-technical@bio-techne.com
Orders: nb-customerservice@bio-techne.com
General: novus@novusbio.com

Limitations

This product is for research use only and is not approved for use in humans or in clinical diagnosis. Primary Antibodies are guaranteed for 1 year from date of receipt.

For more information on our 100% guarantee, please visit www.novusbio.com/guarantee

Earn gift cards/discounts by submitting a review: www.novusbio.com/reviews/submit/NBP2-59317

Earn gift cards/discounts by submitting a publication using this product:
www.novusbio.com/publications

