

Product Datasheet

REEP2 Antibody (S326D-2) NBP2-59313

Unit Size: 100 ug

Store at -20C.

www.novusbio.com



technical@novusbio.com

Protocols, Publications, Related Products, Reviews, Research Tools and Images at:
www.novusbio.com/NBP2-59313

Updated 2/11/2024 v.20.1

Earn rewards for product
reviews and publications.

Submit a publication at www.novusbio.com/publications

Submit a review at www.novusbio.com/reviews/destination/NBP2-59313



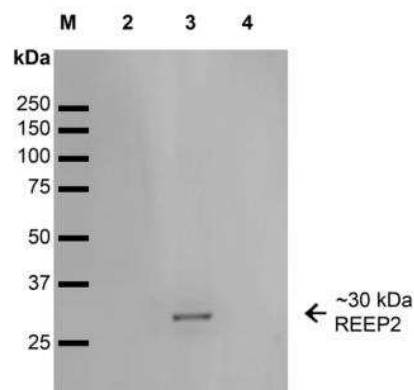
NBP2-59313**REEP2 Antibody (S326D-2)**

Product Information	
Unit Size	100 ug
Concentration	Please see the vial label for concentration. If unlisted please contact technical services.
Storage	Store at -20C.
Clonality	Monoclonal
Clone	S326D-2
Preservative	0.1% Sodium Azide
Isotype	IgG2a
Purity	Protein G purified
Buffer	PBS (pH 7.4), 50% Glycerol
Product Description	
Host	Mouse
Gene ID	51308
Gene Symbol	REEP2
Species	Human, Mouse, Rat
Specificity/Sensitivity	Detects 30kDa.
Immunogen	Fusion protein amino acids 111-254 (cytoplasmic C-terminus) of mouse REEP2
Product Application Details	
Applications	Western Blot, Immunocytochemistry/ Immunofluorescence, Immunohistochemistry
Recommended Dilutions	Western Blot 1:100 - 1:2000, Immunohistochemistry 1:10 - 1:500, Immunocytochemistry/ Immunofluorescence 1:10 - 1:500

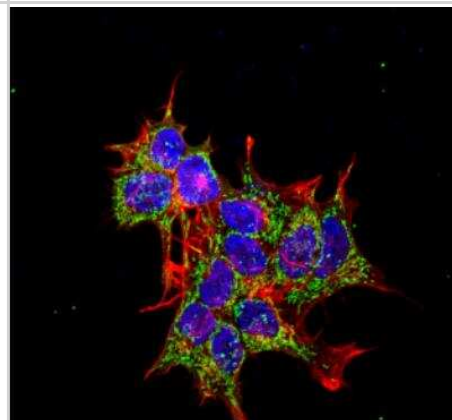


Images

Western Blot: REEP2 Antibody (S326D-2) [NBP2-59313] - Analysis of COS-REEP2-His showing detection of ~ 30 kDa REEP2 protein using Mouse Anti-REEP2 Monoclonal Antibody, Clone S326D-2. Lane 1: MW Ladder. Lane 2: COS-REEP1-His. Lane 3: COS-REEP2-His. Lane 4: COS-REEP6-His. Load: 15 ug protein. Block: 2% GE Healthcare Blocker for 1 hour at RT. Primary Antibody: Mouse Anti-REEP2 Monoclonal Antibody at 1:1000 for 16 hours at 4 degrees C. Secondary Antibody: Goat Anti-Mouse IgG: HRP at 1:200 for 1 hour at RT. Color Development: ECL solution for 6 min at RT. Predicted/Observed Size: ~ 30 kDa.



Immunocytochemistry/Immunofluorescence: REEP2 Antibody (S326D-2) [NBP2-59313] - Tissue: Neuroblastoma cell line SK-N-BE. Species: Human. Fixation: 4% Formaldehyde for 15 min at RT. Primary Antibody: Mouse Anti-REEP2 Monoclonal Antibody at 1:100 for 60 min at RT. Secondary Antibody: Goat Anti-Mouse ATTO 488 at 1:100 for 60 min at RT. Counterstain: Phalloidin Texas Red F-Actin stain; DAPI (blue) nuclear stain at 1:1000; 1:5000 for 60 min RT, 5 min RT. Localization: Mitochondrion, Mitochondrion Membrane, Endoplasmic Reticulum, Endoplasmic Reticulum Membrane. Magnification: 60X.





Novus Biologicals USA

10730 E. Briarwood Avenue
Centennial, CO 80112
USA
Phone: 303.730.1950
Toll Free: 1.888.506.6887
Fax: 303.730.1966
nb-customerservice@bio-techne.com

Bio-Techne Canada

21 Canmotor Ave
Toronto, ON M8Z 4E6
Canada
Phone: 905.827.6400
Toll Free: 855.668.8722
Fax: 905.827.6402
canada.inquires@bio-techne.com

Bio-Techne Ltd

19 Barton Lane
Abingdon Science Park
Abingdon, OX14 3NB, United Kingdom
Phone: (44) (0) 1235 529449
Free Phone: 0800 37 34 15
Fax: (44) (0) 1235 533420
info.EMEA@bio-techne.com

General Contact Information

www.novusbio.com
Technical Support: nb-technical@bio-
techne.com
Orders: nb-customerservice@bio-techne.com
General: novus@novusbio.com

Limitations

This product is for research use only and is not approved for use in humans or in clinical diagnosis. Primary Antibodies are guaranteed for 1 year from date of receipt.

For more information on our 100% guarantee, please visit www.novusbio.com/guarantee

Earn gift cards/discounts by submitting a review: www.novusbio.com/reviews/submit/NBP2-59313

Earn gift cards/discounts by submitting a publication using this product:
www.novusbio.com/publications

