

Product Datasheet

ASH2L Antibody NBP2-59292

Unit Size: 100 ul

Store at -20C. Avoid freeze-thaw cycles.

www.novusbio.com



technical@novusbio.com

Protocols, Publications, Related Products, Reviews, Research Tools and Images at:
www.novusbio.com/NBP2-59292

Updated 5/13/2021 v.20.1

Earn rewards for product
reviews and publications.

Submit a publication at www.novusbio.com/publications

Submit a review at www.novusbio.com/reviews/destination/NBP2-59292



NBP2-59292

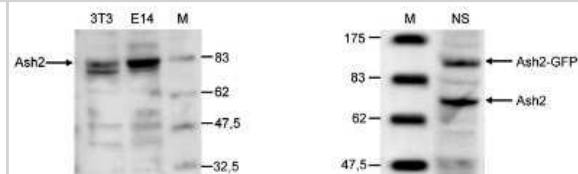
ASH2L Antibody

Product Information	
Unit Size	100 ul
Concentration	Please see the vial label for concentration. If unlisted please contact technical services.
Storage	Store at -20C. Avoid freeze-thaw cycles.
Clonality	Polyclonal
Preservative	0.01% Sodium Azide
Isotype	IgG
Purity	Whole Antiserum
Buffer	Serum
Product Description	
Host	Rabbit
Gene ID	9070
Gene Symbol	ASH2L
Species	Mouse
Immunogen	The exact immunogen is proprietary information.
Product Application Details	
Applications	Western Blot, ELISA, Immunocytochemistry/ Immunofluorescence, Immunofluorescence
Recommended Dilutions	Western Blot 1:500 - 1:1000, ELISA 1:100 - 1:500, Immunocytochemistry/ Immunofluorescence 1:200, Immunofluorescence 1:200



Images

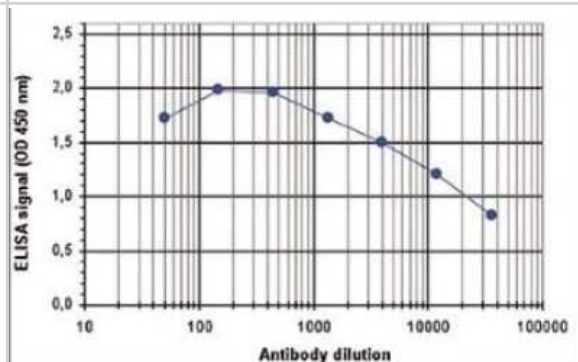
Western Blot: ASH2L Antibody [NBP2-59292] - A. Western blot was performed on whole cell lysates from mouse fibroblastst (NIH3T3) and embryonic stem cells (E14Tg2a) with the antibody against mouse Ash2 , diluted 1:1,000 in BSA/PBS-Tween. The molecular weight marker (in kDa) is shown on the right; the location of the protein of interest (predicted size: 68 kDa) is indicated on the left. **B.** Western blot was performed on whole cell lysates from mouse neural stem cells (NS), transfected with GFP tagged Ash2, with the antibody against mouse Ash2 , diluted 1:500 in BSA/PBS-Tween. The molecular weight marker (in kDa) is shown on the left; the location of the endogenous Ash2 (68 kDa) and of the GFP tagged Ash2 (106 kDa) are indicated on the right.



Immunocytochemistry/Immunofluorescence: ASH2L Antibody [NBP2-59292] - NIH3T3 cells were stained with the antibody against Ash2 and with DAPI. Cells were fixed with 4% formaldehyde for 10 minutes and blocked with PBS/TX-100 containing 5% normal goat serum and 1% BSA. The cells were immunofluorescently labelled with the Ash2 antibody (left) diluted 1:200 in blocking solution followed by an anti-rabbit antibody conjugated to Alexa Fluor 488. The middle panel shows staining of the nuclei with DAPI. A merge of the two stainings is shown on the right.



ELISA: ASH2L Antibody [NBP2-59292] - To determine the titer, an ELISA was performed using a serial dilution of the antibody directed against mouse Ash2. The wells were coated with the peptides used for immunisation of the rabbit. By plotting the absorbance against the antibody dilution, the titer of the antibody was estimated to be 1:24,000.





Novus Biologicals USA

10730 E. Briarwood Avenue
Centennial, CO 80112
USA
Phone: 303.730.1950
Toll Free: 1.888.506.6887
Fax: 303.730.1966
nb-customerservice@bio-techne.com

Bio-Techne Canada

21 Canmotor Ave
Toronto, ON M8Z 4E6
Canada
Phone: 905.827.6400
Toll Free: 855.668.8722
Fax: 905.827.6402
canada.inquires@bio-techne.com

Bio-Techne Ltd

19 Barton Lane
Abingdon Science Park
Abingdon, OX14 3NB, United Kingdom
Phone: (44) (0) 1235 529449
Free Phone: 0800 37 34 15
Fax: (44) (0) 1235 533420
info.EMEA@bio-techne.com

General Contact Information

www.novusbio.com
Technical Support: nb-technical@bio-techne.com
Orders: nb-customerservice@bio-techne.com
General: novus@novusbio.com

Limitations

This product is for research use only and is not approved for use in humans or in clinical diagnosis. Primary Antibodies are guaranteed for 1 year from date of receipt.

For more information on our 100% guarantee, please visit www.novusbio.com/guarantee

Earn gift cards/discounts by submitting a review: www.novusbio.com/reviews/submit/NBP2-59292

Earn gift cards/discounts by submitting a publication using this product:
www.novusbio.com/publications

