

Product Datasheet

CBFB Antibody NBP2-59243

Unit Size: 100 ul

Store at -20C. Avoid freeze-thaw cycles.

www.novusbio.com



technical@novusbio.com

Protocols, Publications, Related Products, Reviews, Research Tools and Images at:
www.novusbio.com/NBP2-59243

Updated 5/13/2021 v.20.1

Earn rewards for product
reviews and publications.

Submit a publication at www.novusbio.com/publications

Submit a review at www.novusbio.com/reviews/destination/NBP2-59243



NBP2-59243

CBFB Antibody

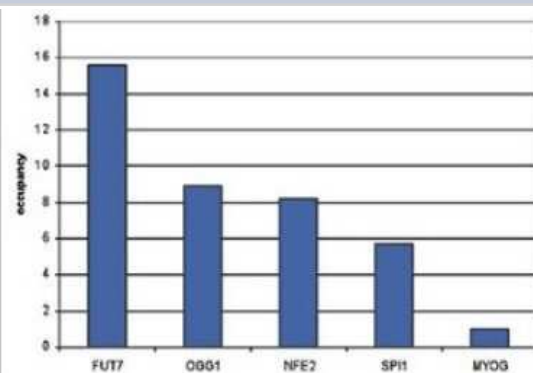
Product Information	
Unit Size	100 ul
Concentration	Please see the vial label for concentration. If unlisted please contact technical services.
Storage	Store at -20C. Avoid freeze-thaw cycles.
Clonality	Polyclonal
Preservative	0.05% Sodium Azide
Isotype	IgG
Purity	Whole Antiserum
Buffer	Serum

Product Description	
Host	Rabbit
Gene ID	865
Gene Symbol	CBFB
Species	Human
Immunogen	The exact immunogen is proprietary information.

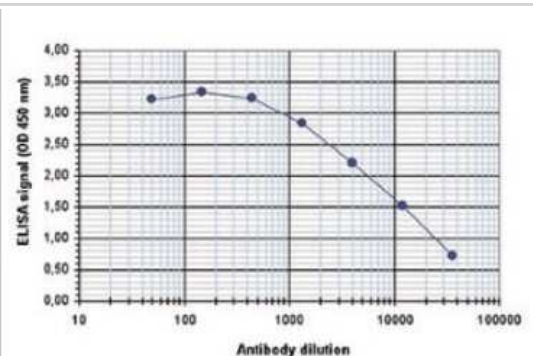
Product Application Details	
Applications	Chromatin Immunoprecipitation, ELISA
Recommended Dilutions	Chromatin Immunoprecipitation 4 uL/IP, ELISA 1:500

Images

Chromatin Immunoprecipitation: CBFB Antibody [NBP2-59243] - ChIP assays were performed using SKNO-1 cells, the antibody against CBFB and optimized primer pairs for qPCR. Sheared chromatin from 1.25 million cells and 4 uL of antibody were used per ChIP experiment. QPCR was performed using primers specific for the FUT7, OGG1, NFE2, and SPI1 genes. Figure shows the relative occupancy, calculated as the ratio + control/background for which the MYOG gene was used.



ELISA: CBFB Antibody [NBP2-59243] - To determine the titer of the antibody, an ELISA was performed using a serial dilution of the antibody directed against human CBFB. The plates were coated with the peptides used for immunization of the rabbit. By plotting the absorbance against the antibody dilution, the titer of the antibody was estimated to be 1:8,800.





Novus Biologicals USA

10730 E. Briarwood Avenue
Centennial, CO 80112
USA

Phone: 303.730.1950

Toll Free: 1.888.506.6887

Fax: 303.730.1966

nb-customerservice@bio-techne.com

Bio-Techne Canada

21 Canmotor Ave
Toronto, ON M8Z 4E6
Canada

Phone: 905.827.6400

Toll Free: 855.668.8722

Fax: 905.827.6402

canada.inquires@bio-techne.com

Bio-Techne Ltd

19 Barton Lane
Abingdon Science Park
Abingdon, OX14 3NB, United Kingdom

Phone: (44) (0) 1235 529449

Free Phone: 0800 37 34 15

Fax: (44) (0) 1235 533420

info.EMEA@bio-techne.com

General Contact Information

www.novusbio.com

Technical Support: nb-technical@bio-techne.com

Orders: nb-customerservice@bio-techne.com

General: novus@novusbio.com

Limitations

This product is for research use only and is not approved for use in humans or in clinical diagnosis. Primary Antibodies are guaranteed for 1 year from date of receipt.

For more information on our 100% guarantee, please visit www.novusbio.com/guarantee

Earn gift cards/discounts by submitting a review: www.novusbio.com/reviews/submit/NBP2-59243

Earn gift cards/discounts by submitting a publication using this product:
www.novusbio.com/publications

