

# Product Datasheet

## CTCF Antibody - BSA Free NBP2-59228

Unit Size: 50 ug

Store at -20C. Avoid freeze-thaw cycles.

[www.novusbio.com](http://www.novusbio.com)



[technical@novusbio.com](mailto:technical@novusbio.com)

Protocols, Publications, Related Products, Reviews, Research Tools and Images at:  
[www.novusbio.com/NBP2-59228](http://www.novusbio.com/NBP2-59228)

Updated 9/9/2025 v.20.1

Earn rewards for product  
reviews and publications.

Submit a publication at [www.novusbio.com/publications](http://www.novusbio.com/publications)

Submit a review at [www.novusbio.com/reviews/destination/NBP2-59228](http://www.novusbio.com/reviews/destination/NBP2-59228)



**NBP2-59228**

CTCF Antibody - BSA Free

**Product Information**

<b>Unit Size</b>	50 ug
<b>Concentration</b>	Please see the vial label for concentration. If unlisted please contact technical services.
<b>Storage</b>	Store at -20C. Avoid freeze-thaw cycles.
<b>Clonality</b>	Polyclonal
<b>Preservative</b>	0.05% Sodium Azide and 0.05% ProClin 300
<b>Isotype</b>	IgG
<b>Purity</b>	Peptide affinity purified
<b>Buffer</b>	PBS

**Product Description**

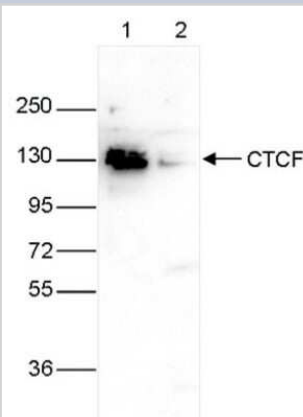
<b>Description</b>	Novus Biologicals Rabbit CTCF Antibody - BSA Free (NBP2-59228) is a polyclonal antibody validated for use in WB, ELISA, ICC/IF and ChIP. All Novus Biologicals antibodies are covered by our 100% guarantee.
<b>Host</b>	Rabbit
<b>Gene ID</b>	10664
<b>Gene Symbol</b>	CTCF
<b>Species</b>	Human
<b>Immunogen</b>	The exact immunogen is proprietary information.

**Product Application Details**

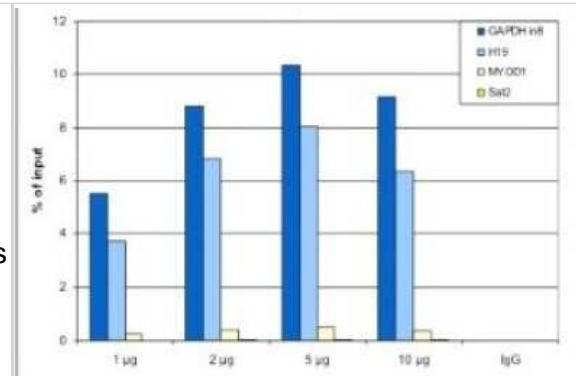
<b>Applications</b>	Western Blot, ELISA, Immunocytochemistry/ Immunofluorescence, Chromatin Immunoprecipitation (ChIP), Chromatin Immunoprecipitation Sequencing, Knockdown Validated
<b>Recommended Dilutions</b>	Western Blot 1:1000, ELISA 1:10000, Immunocytochemistry/ Immunofluorescence 1:200, Chromatin Immunoprecipitation (ChIP) 1 ug/IP, Chromatin Immunoprecipitation Sequencing, Knockdown Validated

**Images**

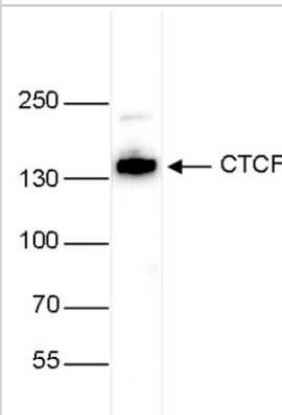
Western Blot: CTCF Antibody [NBP2-59228] - Whole cell extracts (40 ug) from HeLa cells transfected with CTCF siRNA (lane 2) and from an untransfected control (lane 1) were analysed by Western blot using the antibody against CTCF diluted 1:1,000 in TBS-Tween containing 5% skimmed milk. The position of the protein of interest is indicated on the right; the marker (kDa) is shown on the left.



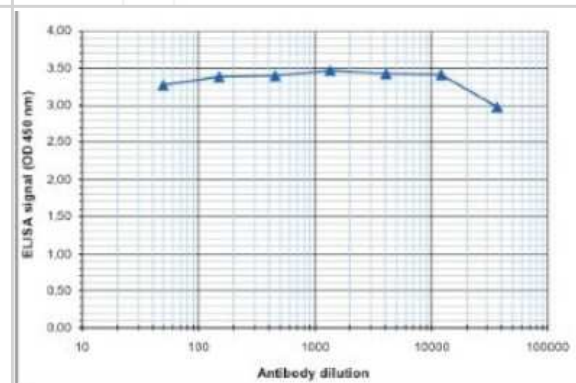
**Chromatin Immunoprecipitation: CTCF Antibody [NBP2-59228] - ChIP** was performed with the antibody against CTCF on sheared chromatin from 4,000,000 HeLa cells. A titration consisting of 1, 2, 5 and 10 ug of antibody per ChIP experiment was analyzed. IgG (2 ug/IP) was used as a negative IP control. Quantitative PCR was performed with optimized primers for the H19 imprinting control region, and a specific region in the GAPDH gene, used as positive controls, and for the MYOD1 gene and the Sat2 satellite repeat region, used as a negative control. Figure shows the recovery, expressed as a % of input (the relative amount of immunoprecipitated DNA compared to input DNA after qPCR analysis).



**Western Blot: CTCF Antibody [NBP2-59228] - Whole cell extracts (25 ug)** from HeLa cells were analysed by Western blot using the antibody against CTCF diluted 1:1,000 in TBS-Tween containing 5% skimmed milk. The position of the protein of interest is indicated on the right; the marker (kDa) is shown on the left.



**ELISA: CTCF Antibody [NBP2-59228] - To determine the titer of the antibody**, an ELISA was performed using a serial dilution of the antibody against CTCF. The plates were coated with the peptides used for immunization of the rabbit. By plotting the absorbance against the antibody dilution, the titer of the antibody was estimated to be >1:500,000.



**Immunofluorescence: CTCF Antibody [NBP2-59228] - HeLa cells** were stained with the antibody against CTCF and with DAPI. Cells were fixed with 4% formaldehyde for 10 minutes and blocked with PBS/TX-100 containing 5% normal goat serum and 1% BSA. The cells were immunofluorescently labeled with the CTCF antibody (left) diluted 1:200 in blocking solution followed by an anti-rabbit antibody conjugated to Alexa Fluor 488. The middle panel shows staining of the nuclei with DAPI. A merge of the two stainings is shown on the right.





### **Novus Biologicals USA**

10730 E. Briarwood Avenue  
Centennial, CO 80112  
USA  
Phone: 303.730.1950  
Toll Free: 1.888.506.6887  
Fax: 303.730.1966  
nb-customerservice@bio-techne.com

### **Bio-Techne Canada**

21 Canmotor Ave  
Toronto, ON M8Z 4E6  
Canada  
Phone: 905.827.6400  
Toll Free: 855.668.8722  
Fax: 905.827.6402  
canada.inquires@bio-techne.com

### **Bio-Techne Ltd**

19 Barton Lane  
Abingdon Science Park  
Abingdon, OX14 3NB, United Kingdom  
Phone: (44) (0) 1235 529449  
Free Phone: 0800 37 34 15  
Fax: (44) (0) 1235 533420  
info.EMEA@bio-techne.com

### **General Contact Information**

www.novusbio.com  
Technical Support: nb-technical@bio-techne.com  
Orders: nb-customerservice@bio-techne.com  
General: novus@novusbio.com

### **Products Related to NBP2-59228**

---

HAF008	Goat anti-Rabbit IgG Secondary Antibody [HRP]
NB7160	Goat anti-Rabbit IgG (H+L) Secondary Antibody [HRP]
NBP2-24891	Rabbit IgG Isotype Control
H00010664-P01-2ug	Recombinant Human CTCF GST (N-Term) Protein

---

### **Limitations**

This product is for research use only and is not approved for use in humans or in clinical diagnosis. Primary Antibodies are guaranteed for 1 year from date of receipt.

For more information on our 100% guarantee, please visit [www.novusbio.com/guarantee](http://www.novusbio.com/guarantee)

Earn gift cards/discounts by submitting a review: [www.novusbio.com/reviews/submit/NBP2-59228](http://www.novusbio.com/reviews/submit/NBP2-59228)

Earn gift cards/discounts by submitting a publication using this product:  
[www.novusbio.com/publications](http://www.novusbio.com/publications)

