

Product Datasheet

HP1 alpha Antibody NBP2-59224

Unit Size: 50 ug

Store at -20C. Avoid freeze-thaw cycles.

www.novusbio.com



technical@novusbio.com

Protocols, Publications, Related Products, Reviews, Research Tools and Images at:
www.novusbio.com/NBP2-59224

Updated 5/6/2020 v.20.1

Earn rewards for product
reviews and publications.

Submit a publication at www.novusbio.com/publications

Submit a review at www.novusbio.com/reviews/destination/NBP2-59224



NBP2-59224**HP1 alpha Antibody****Product Information**

Unit Size	50 ug
Concentration	Please see the vial label for concentration. If unlisted please contact technical services.
Storage	Store at -20C. Avoid freeze-thaw cycles.
Clonality	Polyclonal
Preservative	0.05% Sodium Azide and 0.05% ProClin 300
Isotype	IgG
Purity	Protein G purified
Buffer	PBS

Product Description

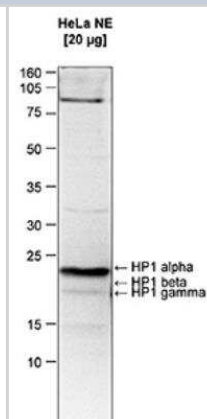
Host	Rabbit
Gene ID	23468
Gene Symbol	CBX5
Species	Human
Immunogen	The exact immunogen is proprietary information.

Product Application Details

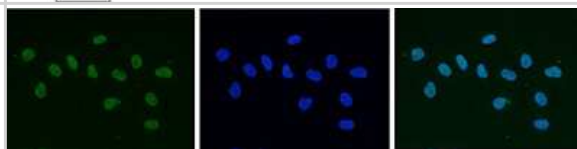
Applications	Western Blot, Immunocytochemistry/ Immunofluorescence, Immunofluorescence
Recommended Dilutions	Western Blot 1:1000, Immunocytochemistry/ Immunofluorescence 1:500, Immunofluorescence 1:500

Images

Western Blot: HP1 alpha Antibody [NBP2-59224] - Western blot was performed on nuclear extracts from HeLa cells (20 ug) with the antibody against human HP1 alpha, diluted 1:1,000 in TBS-Tween containing 5% skimmed milk. The molecular weight marker (kDa) is shown on the left; the expected location of HP1 alpha, HP1 beta and HP1 gamma is indicated on the right. The Western blot analysis clearly demonstrates that the HP1 alpha antibody specifically recognizes HP1 alpha and not HP1 beta and HP1 gamma.



Immunocytochemistry/Immunofluorescence: HP1 alpha Antibody [NBP2-59224] - HeLa cells were stained with the antibody against HP1alpha and with DAPI. Cells were fixed with 4% formaldehyde for 10' and blocked with PBS/TX-100 containing 5% normal goat serum and 1% BSA. The cells were immunofluorescently labelled with the HP1alpha antibody (left) diluted 1:500 in blocking solution followed by an anti-rabbit antibody conjugated to Alexa Fluor 488. The middle panel shows staining of the nuclei with DAPI. A merge of the two stainings is shown on the right.





Novus Biologicals USA

10730 E. Briarwood Avenue
Centennial, CO 80112
USA

Phone: 303.730.1950

Toll Free: 1.888.506.6887

Fax: 303.730.1966

nb-customerservice@bio-techne.com

Bio-Techne Canada

21 Canmotor Ave
Toronto, ON M8Z 4E6
Canada

Phone: 905.827.6400

Toll Free: 855.668.8722

Fax: 905.827.6402

canada.inquires@bio-techne.com

Bio-Techne Ltd

19 Barton Lane
Abingdon Science Park
Abingdon, OX14 3NB, United Kingdom

Phone: (44) (0) 1235 529449

Free Phone: 0800 37 34 15

Fax: (44) (0) 1235 533420

info.EMEA@bio-techne.com

General Contact Information

www.novusbio.com

Technical Support: nb-technical@bio-techne.com

Orders: nb-customerservice@bio-techne.com

General: novus@novusbio.com

Products Related to NBP2-59224

HAF008	Goat anti-Rabbit IgG Secondary Antibody [HRP]
NB7160	Goat anti-Rabbit IgG (H+L) Secondary Antibody [HRP]
NBP2-24891	Rabbit IgG Isotype Control
NB100-2518PEP	HP1 alpha Antibody Blocking Peptide

Limitations

This product is for research use only and is not approved for use in humans or in clinical diagnosis. Primary Antibodies are guaranteed for 1 year from date of receipt.

For more information on our 100% guarantee, please visit www.novusbio.com/guarantee

Earn gift cards/discounts by submitting a review: www.novusbio.com/reviews/submit/NBP2-59224

Earn gift cards/discounts by submitting a publication using this product:
www.novusbio.com/publications

