

Product Datasheet

RNA Polymerase II/POLR2A Antibody (C.15100055) NBP2-59209

Unit Size: 100 ul

Store at -20C. Avoid freeze-thaw cycles.

www.novusbio.com



technical@novusbio.com

Protocols, Publications, Related Products, Reviews, Research Tools and Images at:
www.novusbio.com/NBP2-59209

Updated 11/30/2023 v.20.1

Earn rewards for product
reviews and publications.

Submit a publication at www.novusbio.com/publications

Submit a review at www.novusbio.com/reviews/destination/NBP2-59209



NBP2-59209

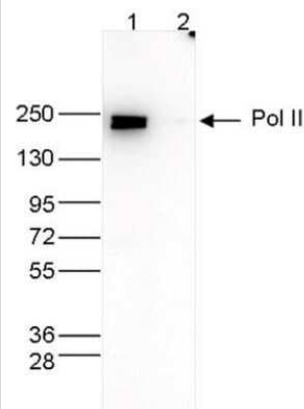
RNA Polymerase II/POLR2A Antibody (C.15100055)

Product Information	
Unit Size	100 ul
Concentration	This product is unpurified. The exact concentration of antibody is not quantifiable.
Storage	Store at -20C. Avoid freeze-thaw cycles.
Clonality	Monoclonal
Clone	C.15100055
Preservative	0.05% Sodium Azide
Isotype	IgG2a
Purity	Ascites
Buffer	Ascites Fluid
Product Description	
Host	Mouse
Gene ID	5430
Gene Symbol	POLR2A
Species	Human, Mouse, Xenopus
Immunogen	The exact immunogen is proprietary information.
Product Application Details	
Applications	Western Blot, Chromatin Immunoprecipitation (ChIP), Chromatin Immunoprecipitation Sequencing, Knockdown Validated
Recommended Dilutions	Western Blot 1:500, Chromatin Immunoprecipitation (ChIP) 2 uL/IP, Chromatin Immunoprecipitation Sequencing 2 uL/IP, Knockdown Validated

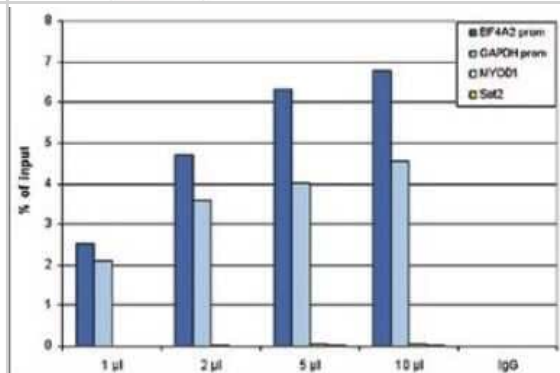


Images

Western Blot: RNA Polymerase II/POLR2A Antibody (C.15100055) [NBP2-59209] - Whole cell extracts (40 ug) from HeLa cells transfected with Pol II siRNA (lane 2) and from an untransfected control (lane 1) were analysed by Western blot using the antibody against Pol II diluted 1:500 in TBS-Tween containing 5% skimmed milk. The position of the protein of interest is indicated on the right; the marker (in kDa) is shown on the left.



Chromatin Immunoprecipitation: RNA Polymerase II/POLR2A Antibody (C.15100055) [NBP2-59209] - ChIP assays were performed using human HeLa cells, the antibody against Pol II and optimized PCR primer pairs for qPCR. ChIP was performed with a ChIP-seq kit, using sheared chromatin from 1 million cells. A titration consisting of 1, 2, 5 and 10 uL of antibody per ChIP experiment was analyzed. IgG (2 ug) was used as a negative IP control. Quantitative PCR was performed with primers specific for the promoter of the GAPDH and EIF4A2 genes, used as positive controls, and for the MYOD1 gene and the Sat2 satellite repeat, used as negative controls. Figure shows the recovery, expressed as a % of input (the relative amount of immunoprecipitated DNA compared to input DNA after qPCR analysis).





Novus Biologicals USA

10730 E. Briarwood Avenue
Centennial, CO 80112
USA
Phone: 303.730.1950
Toll Free: 1.888.506.6887
Fax: 303.730.1966
nb-customerservice@bio-techne.com

Bio-Techne Canada

21 Canmotor Ave
Toronto, ON M8Z 4E6
Canada
Phone: 905.827.6400
Toll Free: 855.668.8722
Fax: 905.827.6402
canada.inquires@bio-techne.com

Bio-Techne Ltd

19 Barton Lane
Abingdon Science Park
Abingdon, OX14 3NB, United Kingdom
Phone: (44) (0) 1235 529449
Free Phone: 0800 37 34 15
Fax: (44) (0) 1235 533420
info.EMEA@bio-techne.com

General Contact Information

www.novusbio.com
Technical Support: nb-technical@bio-techne.com
Orders: nb-customerservice@bio-techne.com
General: novus@novusbio.com

Limitations

This product is for research use only and is not approved for use in humans or in clinical diagnosis. Primary Antibodies are guaranteed for 1 year from date of receipt.

For more information on our 100% guarantee, please visit www.novusbio.com/guarantee

Earn gift cards/discounts by submitting a review: www.novusbio.com/reviews/submit/NBP2-59209

Earn gift cards/discounts by submitting a publication using this product:
www.novusbio.com/publications

