

Product Datasheet

JMJD2B Antibody NBP2-59196

Unit Size: 100 ul

Store at -20C. Avoid freeze-thaw cycles.

www.novusbio.com



technical@novusbio.com

Protocols, Publications, Related Products, Reviews, Research Tools and Images at:
www.novusbio.com/NBP2-59196

Updated 5/13/2021 v.20.1

Earn rewards for product
reviews and publications.

Submit a publication at www.novusbio.com/publications

Submit a review at www.novusbio.com/reviews/destination/NBP2-59196



NBP2-59196

JMJD2B Antibody

Product Information

Unit Size	100 ul
Concentration	Please see the vial label for concentration. If unlisted please contact technical services.
Storage	Store at -20C. Avoid freeze-thaw cycles.
Clonality	Polyclonal
Preservative	0.05% Sodium Azide
Isotype	IgG
Purity	Whole Antiserum
Buffer	Serum

Product Description

Host	Rabbit
Gene ID	23030
Gene Symbol	KDM4B
Species	Human
Immunogen	The exact immunogen is proprietary information.

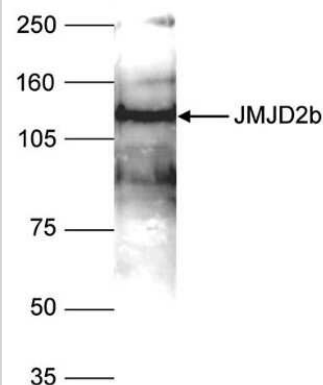
Product Application Details

Applications	Western Blot, ELISA, Immunocytochemistry/ Immunofluorescence
Recommended Dilutions	Western Blot 1:1000, ELISA 1:200, Immunocytochemistry/ Immunofluorescence 1:200

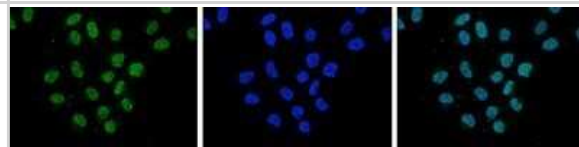


Images

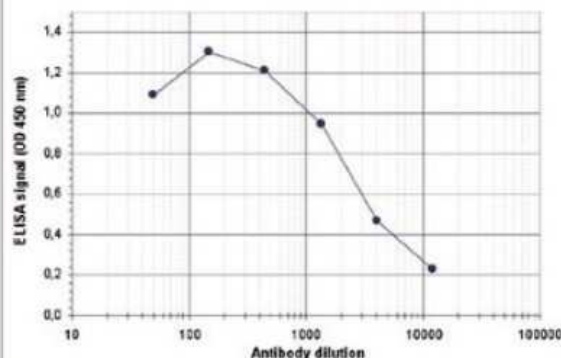
Western Blot: JMJD2B Antibody [NBP2-59196] - Nuclear extracts of HeLa cells (40 ug) were analysed by Western blot using the antibody against JMJD2b diluted 1:1,000 in TBS-Tween containing 5% skimmed milk. The position of the protein of interest is indicated on the right; the marker (in kDa) is shown on the left.



Immunocytochemistry/Immunofluorescence: JMJD2B Antibody [NBP2-59196] - HeLa cells were stained with the antibody against JMJD2b and with DAPI. Cells were fixed with 4% formaldehyde for 10 minutes and blocked with PBS/TX-100 containing 5% normal goat serum and 1% BSA. The cells were immunofluorescently labelled with the JMJD2b antibody (left) diluted 1:200 in blocking solution followed by an anti-rabbit antibody conjugated to Alexa Fluor 488. The middle panel shows staining of the nuclei with DAPI. A merge of the two stainings is shown on the right.



ELISA: JMJD2B Antibody [NBP2-59196] - To determine the titer, an ELISA was performed using a serial dilution of the antibody directed against human JMJD2b. The wells were coated with the peptide used for immunisation of the rabbit. By plotting the absorbance against the antibody dilution, the titer of the antibody was estimated to be 1:3,000.





Novus Biologicals USA

10730 E. Briarwood Avenue
Centennial, CO 80112
USA
Phone: 303.730.1950
Toll Free: 1.888.506.6887
Fax: 303.730.1966
nb-customerservice@bio-techne.com

Bio-Techne Canada

21 Canmotor Ave
Toronto, ON M8Z 4E6
Canada
Phone: 905.827.6400
Toll Free: 855.668.8722
Fax: 905.827.6402
canada.inquires@bio-techne.com

Bio-Techne Ltd

19 Barton Lane
Abingdon Science Park
Abingdon, OX14 3NB, United Kingdom
Phone: (44) (0) 1235 529449
Free Phone: 0800 37 34 15
Fax: (44) (0) 1235 533420
info.EMEA@bio-techne.com

General Contact Information

www.novusbio.com
Technical Support: nb-technical@bio-
techne.com
Orders: nb-customerservice@bio-techne.com
General: novus@novusbio.com

Limitations

This product is for research use only and is not approved for use in humans or in clinical diagnosis.
Primary Antibodies are guaranteed for 1 year from date of receipt.

For more information on our 100% guarantee, please visit www.novusbio.com/guarantee

Earn gift cards/discounts by submitting a review: www.novusbio.com/reviews/submit/NBP2-59196

Earn gift cards/discounts by submitting a publication using this product:
www.novusbio.com/publications

