

# Product Datasheet

## RGL2 Antibody NBP2-59128

Unit Size: 100 ul

Store at 4C.

[www.novusbio.com](http://www.novusbio.com)



[technical@novusbio.com](mailto:technical@novusbio.com)

Protocols, Publications, Related Products, Reviews, Research Tools and Images at:  
[www.novusbio.com/NBP2-59128](http://www.novusbio.com/NBP2-59128)

Updated 10/10/2022 v.20.1

Earn rewards for product  
reviews and publications.

Submit a publication at [www.novusbio.com/publications](http://www.novusbio.com/publications)

Submit a review at [www.novusbio.com/reviews/destination/NBP2-59128](http://www.novusbio.com/reviews/destination/NBP2-59128)



**NBP2-59128****RGL2 Antibody****Product Information**

<b>Unit Size</b>	100 ul
<b>Concentration</b>	0.4 mg/ml
<b>Storage</b>	Store at 4C.
<b>Clonality</b>	Polyclonal
<b>Preservative</b>	0.09% Sodium Azide
<b>Isotype</b>	IgG
<b>Purity</b>	Immunogen affinity purified
<b>Buffer</b>	Tris-buffered Saline containing 0.1% BSA

**Product Description**

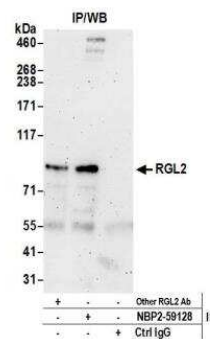
<b>Host</b>	Rabbit
<b>Gene ID</b>	5863
<b>Gene Symbol</b>	RGL2
<b>Species</b>	Human
<b>Immunogen</b>	Maps to a region between 727 and 777

**Product Application Details**

<b>Applications</b>	Immunoprecipitation, Western Blot (Negative)
<b>Recommended Dilutions</b>	Immunoprecipitation 8-15 ug/mg lysate, Western Blot (Negative)
<b>Application Notes</b>	Western Blot Not recommended.

**Images**

Immunoprecipitation: RGL2 Antibody [NBP2-59128] - Detection of human RGL2 by western blot of immunoprecipitates. Samples: Whole cell lysate (0.5 or 1.0 mg per IP reaction; 20% of IP loaded) from HeLa cells prepared using NETN lysis buffer. Antibodies: Affinity purified rabbit anti-RGL2 antibody NBP2-59128 used for IP at 8 ul per reaction. RGL2 was also immunoprecipitated by another rabbit anti-RGL2 antibody. Detection: Chemiluminescence with an exposure time of 3 minutes.





### **Novus Biologicals USA**

10730 E. Briarwood Avenue  
Centennial, CO 80112  
USA  
Phone: 303.730.1950  
Toll Free: 1.888.506.6887  
Fax: 303.730.1966  
nb-customerservice@bio-techne.com

### **Bio-Techne Canada**

21 Canmotor Ave  
Toronto, ON M8Z 4E6  
Canada  
Phone: 905.827.6400  
Toll Free: 855.668.8722  
Fax: 905.827.6402  
canada.inquires@bio-techne.com

### **Bio-Techne Ltd**

19 Barton Lane  
Abingdon Science Park  
Abingdon, OX14 3NB, United Kingdom  
Phone: (44) (0) 1235 529449  
Free Phone: 0800 37 34 15  
Fax: (44) (0) 1235 533420  
info.EMEA@bio-techne.com

### **General Contact Information**

[www.novusbio.com](http://www.novusbio.com)  
Technical Support: nb-technical@bio-techne.com  
Orders: nb-customerservice@bio-techne.com  
General: novus@novusbio.com

### **Limitations**

This product is for research use only and is not approved for use in humans or in clinical diagnosis. Primary Antibodies are guaranteed for 1 year from date of receipt.

For more information on our 100% guarantee, please visit [www.novusbio.com/guarantee](http://www.novusbio.com/guarantee)

Earn gift cards/discounts by submitting a review: [www.novusbio.com/reviews/submit/NBP2-59128](http://www.novusbio.com/reviews/submit/NBP2-59128)

Earn gift cards/discounts by submitting a publication using this product:  
[www.novusbio.com/publications](http://www.novusbio.com/publications)

