

Product Datasheet

Methionine Aminopeptidase 1/METAP1 Antibody NBP2-59108

Unit Size: 100 ul

Store at 4C.

www.novusbio.com



technical@novusbio.com

Protocols, Publications, Related Products, Reviews, Research Tools and Images at:
www.novusbio.com/NBP2-59108

Updated 10/10/2022 v.20.1

Earn rewards for product
reviews and publications.

Submit a publication at www.novusbio.com/publications

Submit a review at www.novusbio.com/reviews/destination/NBP2-59108



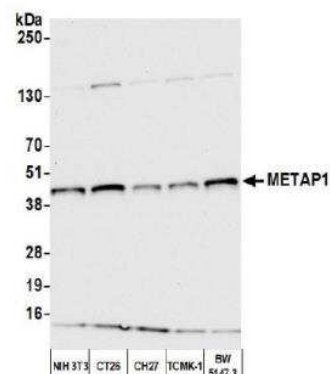
NBP2-59108**Methionine Aminopeptidase 1/METAP1 Antibody**

Product Information	
Unit Size	100 ul
Concentration	Please see the vial label for concentration. If unlisted please contact technical services.
Storage	Store at 4C.
Clonality	Polyclonal
Preservative	0.09% Sodium Azide
Isotype	IgG
Purity	Immunogen affinity purified
Buffer	Tris-buffered Saline containing 0.1% BSA
Product Description	
Host	Rabbit
Gene ID	23173
Gene Symbol	METAP1
Species	Human, Mouse
Immunogen	Maps to a region between 336 and 386
Product Application Details	
Applications	Western Blot, Immunoprecipitation
Recommended Dilutions	Western Blot 1:1000, Immunoprecipitation 20 ul/mg lysate
Application Notes	Centrifuge tube to remove product from lid. Optimal working dilutions should be determined experimentally by the investigator. Prepare working dilution immediately before use.

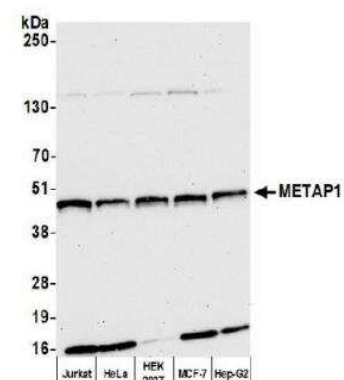


Images

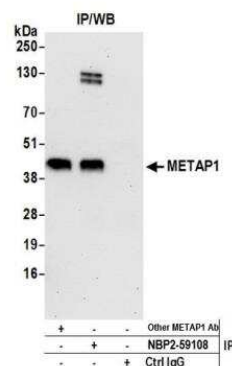
Western Blot: Methionine Aminopeptidase 1/METAP1 Antibody [NBP2-59108] - Whole cell lysate (10 ug) from NIH 3T3, CT26, CH27, TCMK-1, and BW5147.3 cells prepared using NETN lysis buffer. Antibody: Affinity purified rabbit anti-METAP1 antibody used for WB at 1:1000. Detection: Chemiluminescence with an exposure time of 10 seconds.



Western Blot: Methionine Aminopeptidase 1/METAP1 Antibody [NBP2-59108] - Whole cell lysate (10 ug) from Jurkat, HeLa, HEK293T, MCF-7, and Hep-G2 cells prepared using NETN lysis buffer. Antibody: Affinity purified rabbit anti-METAP1 antibody used for WB at 1:1000. Detection: Chemiluminescence with an exposure time of 30 seconds.



Immunoprecipitation: Methionine Aminopeptidase 1/METAP1 Antibody [NBP2-59108] - Detection of human METAP1 by western blot of immunoprecipitates. Samples: Whole cell lysate (0.5 or 1.0 mg per IP reaction; 20% of IP loaded) from 293T cells prepared using NETN lysis buffer. Antibodies: Affinity purified rabbit anti-METAP1 antibody NBP2-59108 used for IP at 20 ul per reaction. METAP1 was also immunoprecipitated by another rabbit anti-METAP1 antibody. For blotting immunoprecipitated METAP1, NBP2-59108 was used at 1:100. Detection: Chemiluminescence with an exposure time of 30 seconds.





Novus Biologicals USA

10730 E. Briarwood Avenue
Centennial, CO 80112
USA
Phone: 303.730.1950
Toll Free: 1.888.506.6887
Fax: 303.730.1966
nb-customerservice@bio-techne.com

Bio-Techne Canada

21 Canmotor Ave
Toronto, ON M8Z 4E6
Canada
Phone: 905.827.6400
Toll Free: 855.668.8722
Fax: 905.827.6402
canada.inquires@bio-techne.com

Bio-Techne Ltd

19 Barton Lane
Abingdon Science Park
Abingdon, OX14 3NB, United Kingdom
Phone: (44) (0) 1235 529449
Free Phone: 0800 37 34 15
Fax: (44) (0) 1235 533420
info.EMEA@bio-techne.com

General Contact Information

www.novusbio.com
Technical Support: nb-technical@bio-
techne.com
Orders: nb-customerservice@bio-techne.com
General: novus@novusbio.com

Limitations

This product is for research use only and is not approved for use in humans or in clinical diagnosis.
Primary Antibodies are guaranteed for 1 year from date of receipt.

For more information on our 100% guarantee, please visit www.novusbio.com/guarantee

Earn gift cards/discounts by submitting a review: www.novusbio.com/reviews/submit/NBP2-59108

Earn gift cards/discounts by submitting a publication using this product:
www.novusbio.com/publications

