

Product Datasheet

PLC-beta 4 Antibody NBP2-58912

Unit Size: 100 ul

Store at 4C short term. Aliquot and store at -20C long term. Avoid freeze-thaw cycles.

www.novusbio.com



technical@novusbio.com

Protocols, Publications, Related Products, Reviews, Research Tools and Images at:
www.novusbio.com/NBP2-58912

Updated 5/3/2023 v.20.1

Earn rewards for product
reviews and publications.

Submit a publication at www.novusbio.com/publications

Submit a review at www.novusbio.com/reviews/destination/NBP2-58912



NBP2-58912**PLC-beta 4 Antibody****Product Information**

Unit Size	100 ul
Concentration	Concentrations vary lot to lot. See vial label for concentration. If unlisted please contact technical services.
Storage	Store at 4C short term. Aliquot and store at -20C long term. Avoid freeze-thaw cycles.
Clonality	Polyclonal
Preservative	0.02% Sodium Azide
Isotype	IgG
Purity	Affinity purified
Buffer	PBS (pH 7.2) and 40% Glycerol

Product Description

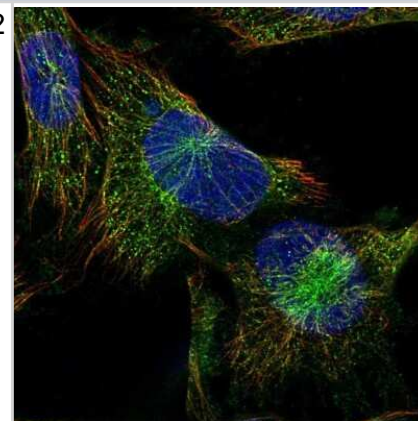
Host	Rabbit
Gene ID	5332
Gene Symbol	PLCB4
Species	Human
Immunogen	This antibody was developed against a recombinant protein corresponding to the following amino acid sequence: SLPTIFCNIVLKTYVPDGFGLDIVDALSDPKKFLSITEKRADQMRAMGIETSDIADV PSDTSKNDKKGKANTAKANVTPQSSSELRPPTTTAALASGVEAKKGIELIPQVRIE DLKQMKAYLKHLKKQKQKELNSLKKKHAKHSTMQKL

Product Application Details

Applications	Immunocytochemistry/ Immunofluorescence, Immunohistochemistry, Immunohistochemistry-Paraffin
Recommended Dilutions	Immunohistochemistry 1:500 - 1:1000, Immunocytochemistry/ Immunofluorescence 0.25-2 ug/ml, Immunohistochemistry-Paraffin 1:500 - 1:1000
Application Notes	ICC/IF Fixation Permeabilization: Use PFA/Triton X-100. IHC-P Retrieval method: HIER pH6.

Images

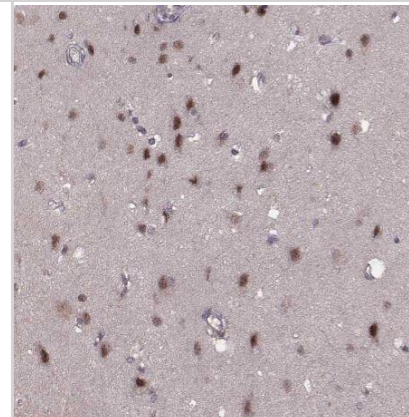
Immunocytochemistry/Immunofluorescence: PLC-beta 4 Antibody [NBP2-58912] - Staining of human cell line U-251 MG shows localization to microtubules. Antibody staining is shown in green.



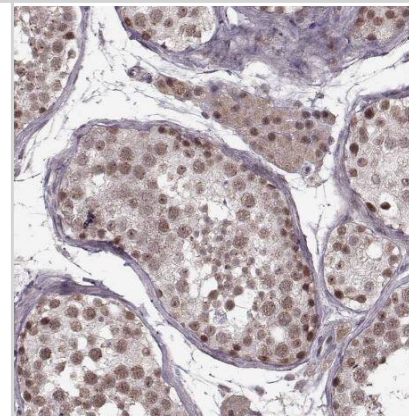
PLC-beta 4 Antibody [NBP2-58912] - Staining of human rectum shows strong cytoplasmic positivity in glandular cells.



PLC-beta 4 Antibody [NBP2-58912]- Staining of human cerebral cortex shows strong nuclear positivity in neuronal cells.



PLC-beta 4 Antibody [NBP2-58912] - Staining of human testis shows moderate nuclear positivity in cells in seminiferous ducts.



PLC-beta 4 Antibody [NBP2-58912] -Staining of human skeletal muscle shows no positivity in myocytes as expected.





Novus Biologicals USA

10730 E. Briarwood Avenue
Centennial, CO 80112
USA
Phone: 303.730.1950
Toll Free: 1.888.506.6887
Fax: 303.730.1966
nb-customerservice@bio-techne.com

Bio-Techne Canada

21 Canmotor Ave
Toronto, ON M8Z 4E6
Canada
Phone: 905.827.6400
Toll Free: 855.668.8722
Fax: 905.827.6402
canada.inquires@bio-techne.com

Bio-Techne Ltd

19 Barton Lane
Abingdon Science Park
Abingdon, OX14 3NB, United Kingdom
Phone: (44) (0) 1235 529449
Free Phone: 0800 37 34 15
Fax: (44) (0) 1235 533420
info.EMEA@bio-techne.com

General Contact Information

www.novusbio.com
Technical Support: nb-technical@bio-techne.com
Orders: nb-customerservice@bio-techne.com
General: novus@novusbio.com

Products Related to NBP2-58912

NBP2-58912PEP	PLC-beta 4 Recombinant Protein Antigen
HAF008	Goat anti-Rabbit IgG Secondary Antibody [HRP]
NB7160	Goat anti-Rabbit IgG (H+L) Secondary Antibody [HRP]
NBP2-24891	Rabbit IgG Isotype Control

Limitations

This product is for research use only and is not approved for use in humans or in clinical diagnosis. Primary Antibodies are guaranteed for 1 year from date of receipt.

For more information on our 100% guarantee, please visit www.novusbio.com/guarantee

Earn gift cards/discounts by submitting a review: www.novusbio.com/reviews/submit/NBP2-58912

Earn gift cards/discounts by submitting a publication using this product:
www.novusbio.com/publications

