

Product Datasheet

Nuclear Factor Erythroid 2 Related Factor 1 Antibody NBP2-55915

Unit Size: 100 ul

Store at 4C short term. Aliquot and store at -20C long term. Avoid freeze-thaw cycles.

www.novusbio.com



technical@novusbio.com

Publications: 3

Protocols, Publications, Related Products, Reviews, Research Tools and Images at:
www.novusbio.com/NBP2-55915

Updated 3/20/2023 v.20.1

Earn rewards for product
reviews and publications.

Submit a publication at www.novusbio.com/publications

Submit a review at www.novusbio.com/reviews/destination/NBP2-55915



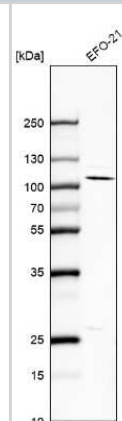
NBP2-55915**Nuclear Factor Erythroid 2 Related Factor 1 Antibody**

Product Information	
Unit Size	100 ul
Concentration	Concentrations vary lot to lot. See vial label for concentration. If unlisted please contact technical services.
Storage	Store at 4C short term. Aliquot and store at -20C long term. Avoid freeze-thaw cycles.
Clonality	Polyclonal
Preservative	0.02% Sodium Azide
Isotype	IgG
Purity	Affinity purified
Buffer	PBS (pH 7.2) and 40% Glycerol
Product Description	
Host	Rabbit
Gene ID	4779
Gene Symbol	NFE2L1
Species	Human
Immunogen	This antibody was developed against a recombinant protein corresponding to the following amino acid sequence: FDYSHRQKEQDVEKELRDGGEQDTWAGEGAEALARNLLVDGETGESFPAQV PSGEDQTALSL
Product Application Details	
Applications	Western Blot, Immunocytochemistry/ Immunofluorescence
Recommended Dilutions	Western Blot 0.04-0.4 ug/ml, Immunocytochemistry/ Immunofluorescence 0.25-2 ug/ml
Application Notes	ICC/IF Fixation Permeabilization: Use PFA/Triton X-100.

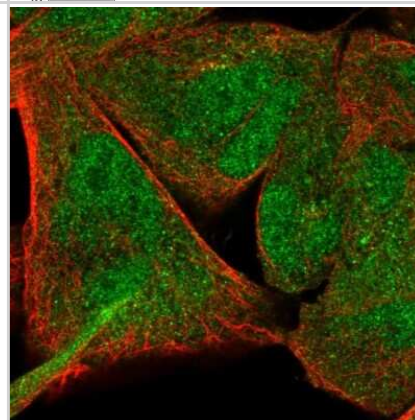


Images

Western Blot: Nuclear Factor Erythroid 2 Related Factor 1 Antibody [NBP2-55915] - Analysis in human cell line EFO-21.



Immunocytochemistry/Immunofluorescence: Nuclear Factor Erythroid 2 Related Factor 1 Antibody [NBP2-55915] - Staining of human cell line RH-30 shows localization to nucleus & cytosol. Antibody staining is shown in green.



Publications

Cameron S Anti-Cancer and Stress Response Pathway Effects of Nanosilver and Sodium Ascorbate Carleton University 2022-07-11 (WB, Human)

Sheng J Cellular Effects Nanosilver on Cancer and Non-cancer Cells: Potential Environmental and Human Health Impacts Thesis

Billingsley J Effect of NFE2L1 Overexpression and Knock Down on the Response of XBP1 Splice Variants to Endoplasmic Reticulum Stress Carleton University 2021-03-24 (WB)



Novus Biologicals USA

10730 E. Briarwood Avenue
Centennial, CO 80112
USA
Phone: 303.730.1950
Toll Free: 1.888.506.6887
Fax: 303.730.1966
nb-customerservice@bio-techne.com

Bio-Techne Canada

21 Canmotor Ave
Toronto, ON M8Z 4E6
Canada
Phone: 905.827.6400
Toll Free: 855.668.8722
Fax: 905.827.6402
canada.inquires@bio-techne.com

Bio-Techne Ltd

19 Barton Lane
Abingdon Science Park
Abingdon, OX14 3NB, United Kingdom
Phone: (44) (0) 1235 529449
Free Phone: 0800 37 34 15
Fax: (44) (0) 1235 533420
info.EMEA@bio-techne.com

General Contact Information

www.novusbio.com
Technical Support: nb-technical@bio-techne.com
Orders: nb-customerservice@bio-techne.com
General: novus@novusbio.com

Limitations

This product is for research use only and is not approved for use in humans or in clinical diagnosis. Primary Antibodies are guaranteed for 1 year from date of receipt.

For more information on our 100% guarantee, please visit www.novusbio.com/guarantee

Earn gift cards/discounts by submitting a review: www.novusbio.com/reviews/submit/NBP2-55915

Earn gift cards/discounts by submitting a publication using this product:
www.novusbio.com/publications

