

# Product Datasheet

## Ovary Tissue Slides (Adult)- Paraffin NBP2-54896

Unit Size: 5 Slides

Store at -20C short term. Aliquot and store at -80C long term. Avoid freeze-thaw cycles.

[www.novusbio.com](http://www.novusbio.com)



[technical@novusbio.com](mailto:technical@novusbio.com)

Protocols, Publications, Related Products, Reviews, Research Tools and Images at:  
[www.novusbio.com/NBP2-54896](http://www.novusbio.com/NBP2-54896)

Updated 1/9/2024 v.20.1

Earn rewards for product  
reviews and publications.

Submit a publication at [www.novusbio.com/publications](http://www.novusbio.com/publications)

Submit a review at [www.novusbio.com/reviews/destination/NBP2-54896](http://www.novusbio.com/reviews/destination/NBP2-54896)



**NBP2-54896****Ovary Tissue Slides (Adult)- Paraffin****Product Information**

<b>Unit Size</b>	5 Slides
<b>Concentration</b>	Concentration is not relevant for this product. Please see the protocols for proper use of this product.
<b>Storage</b>	Store at -20C short term. Aliquot and store at -80C long term. Avoid freeze-thaw cycles.
<b>Buffer</b>	HEPES (pH 7.9), MgCl <sub>2</sub> , KCl, EDTA, Sucrose, Glycerol, Sodium deoxycholate, NP-40, and a cocktail of protease inhibitors

**Product Description**

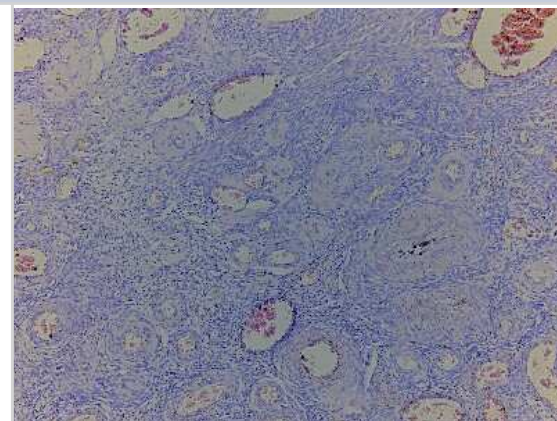
<b>Description</b>	<p>Single human normal tissue slide with 5 Aum of tissues mounted. These tissue sections are designed for rapidly identifying cellular localization of genes or proteins in bovine tissues. For FFPE DNA and RNA isolation customers, we can provide tissue section slices in tubes instead of mounting them on the glass slides.</p> <p>Paraffin Tissue Section Human Adult Normal  <b>Donor Information:</b> Female: 34 yrs old, 1 donor  <b>Clinical Diagnosis:</b> Normal  <b>Donor Information:</b> Female (34 Years old)</p>
<b>Species</b>	Human
<b>Lysate Type</b>	Tissue
<b>Lysate Tissue</b>	Ovary
<b>Lysate Life Stage</b>	Adult

**Product Application Details**

<b>Applications</b>	Hematoxylin and Eosin Stain
<b>Recommended Dilutions</b>	Hematoxylin and Eosin Stain

**Images**

Hematoxylin & Eosin Stain: Human Ovary Tissue Lysate (Adult) [NBP2-54896] - Tissue: Human Ovary, Pathology: Normal





### **Novus Biologicals USA**

10730 E. Briarwood Avenue  
Centennial, CO 80112  
USA  
Phone: 303.730.1950  
Toll Free: 1.888.506.6887  
Fax: 303.730.1966  
nb-customerservice@bio-techne.com

### **Bio-Techne Canada**

21 Canmotor Ave  
Toronto, ON M8Z 4E6  
Canada  
Phone: 905.827.6400  
Toll Free: 855.668.8722  
Fax: 905.827.6402  
canada.inquires@bio-techne.com

### **Bio-Techne Ltd**

19 Barton Lane  
Abingdon Science Park  
Abingdon, OX14 3NB, United Kingdom  
Phone: (44) (0) 1235 529449  
Free Phone: 0800 37 34 15  
Fax: (44) (0) 1235 533420  
info.EMEA@bio-techne.com

### **General Contact Information**

www.novusbio.com  
Technical Support: nb-technical@bio-  
techne.com  
Orders: nb-customerservice@bio-techne.com  
General: novus@novusbio.com

### **Products Related to NBP2-54896**

---

NBP2-30290	Human Ovary Tissue MicroArray (Cancer)
------------	--

---

### **Limitations**

This product is for research use only and is not approved for use in humans or in clinical diagnosis. Slides are guaranteed for 3 months from date of receipt.

For more information on our 100% guarantee, please visit [www.novusbio.com/guarantee](http://www.novusbio.com/guarantee)

Earn gift cards/discounts by submitting a review: [www.novusbio.com/reviews/submit/NBP2-54896](http://www.novusbio.com/reviews/submit/NBP2-54896)

Earn gift cards/discounts by submitting a publication using this product:  
[www.novusbio.com/publications](http://www.novusbio.com/publications)

