

# Product Datasheet

## EpCAM/TROP1 Antibody (rMOC-31) - Azide and BSA Free NBP2-54521-100ug

Unit Size: 100 ug

Store at -20 to -80C. Avoid freeze-thaw cycles.

[www.novusbio.com](http://www.novusbio.com)



[technical@novusbio.com](mailto:technical@novusbio.com)

Protocols, Publications, Related Products, Reviews, Research Tools and Images at:  
[www.novusbio.com/NBP2-54521](http://www.novusbio.com/NBP2-54521)

Updated 7/16/2024 v.20.1

Earn rewards for product  
reviews and publications.

Submit a publication at [www.novusbio.com/publications](http://www.novusbio.com/publications)

Submit a review at [www.novusbio.com/reviews/destination/NBP2-54521](http://www.novusbio.com/reviews/destination/NBP2-54521)



**NBP2-54521-100ug**

EpCAM/TROP1 Antibody (rMOC-31) - Azide and BSA Free

Product Information	
Unit Size	100 ug
Concentration	1 mg/ml
Storage	Store at -20 to -80C. Avoid freeze-thaw cycles.
Clonality	Monoclonal
Clone	rMOC-31
Preservative	No Preservative
Isotype	IgG1 Kappa
Purity	Protein A or G purified
Buffer	10 mM PBS

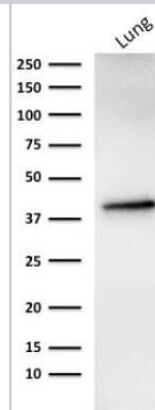
Product Description	
Description	1.0 mg/ml of recombinant monoclonal antibody purified by Protein A/G. Prepared in 10mM PBS WITHOUT BSA & azide. Also available at 200 ug/ml WITH BSA & azide (NBP2-53329).  Antibody with azide - store at 2 to 8C. Antibody without azide - store at -20 to -80 C.
Host	Mouse
Gene ID	4072
Gene Symbol	EPCAM
Species	Human, Rat (Negative)
Reactivity Notes	Does not react with Rat, Canine or Feline.
Marker	Epithelial Marker
Specificity/Sensitivity	Binding epitope of this antibody is located in the first EGF-like repeat domain (EGF1) between amino acids 27-59 of EpCAM. EGP40 is a 40-43kDa transmembrane epithelial glycoprotein, also identified as epithelial specific antigen (ESA), or epithelial cellular adhesion molecule (EpCAM). It is expressed on baso-lateral cell surface in most simple epithelia and a vast majority of carcinomas with the exception of adult squamous epithelium, hepatocytes and gastric epithelial cells. This antibody has been used to distinguish adenocarcinoma from pleural mesothelioma and hepatocellular carcinoma. This antibody is also useful in distinguishing serous carcinomas of the ovary from mesothelioma.
Immunogen	Recombinant full-length human EpCAM/TROP1 protein (Uniprot: P16422 )

Product Application Details	
Applications	Western Blot, Flow Cytometry, Immunocytochemistry/ Immunofluorescence, Immunohistochemistry, Immunohistochemistry-Paraffin, CyTOF-ready
Recommended Dilutions	Western Blot 0.5 - 1.0 ug/ml, Flow Cytometry 0.5 - 1 ug/million cells, Immunohistochemistry, Immunocytochemistry/ Immunofluorescence 1 - 2 ug/ml, Immunohistochemistry-Paraffin 0.5 - 1.0 ug/ml, CyTOF-ready
Application Notes	Immunohistochemistry (Formalin-fixed): 1-2ug/ml for 30 minutes at RT. Staining of formalin-fixed tissues requires heating tissue sections in 10mM Tris with 1mM EDTA, pH 9.0, for 45 min at 95C followed by cooling at RT for 20 minutes. Optimal dilution for a specific application should be determined.

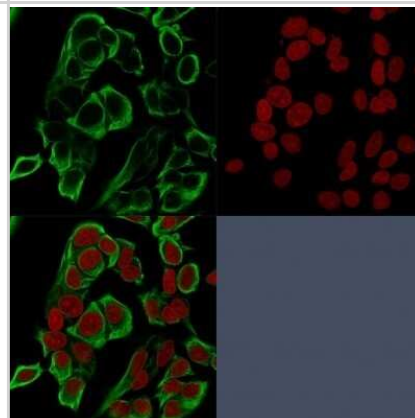


## Images

Western Blot: EpCAM/TROP1 Antibody (rMOC-31) - Azide and BSA Free [NBP2-54521] - Western blot analysis of human lung tissue lysate using EpCAM/TROP1 antibody (rMOC-31).



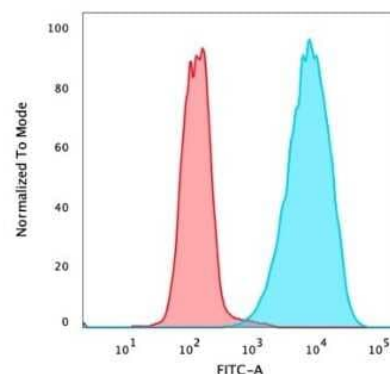
Immunocytochemistry/Immunofluorescence: EpCAM/TROP1 Antibody (rMOC-31) - Azide and BSA Free [NBP2-54521] - Confocal immunofluorescence analysis of MCF-7 cells using labeled in Green. Red Dot is used to label the nucleus red.



Immunohistochemistry-Paraffin: EpCAM/TROP1 Antibody (rMOC-31) - Azide and BSA Free [NBP2-54521] - Formalin-fixed, paraffin-embedded Human Colon Carcinoma stained with Ep-CAM Recombinant Mouse Monoclonal Antibody (rMOC-31).



Flow Cytometry: EpCAM/TROP1 Antibody (rMOC-31) - Azide and BSA Free [NBP2-54521] - Flow cytometric analysis of PFA-fixed MCF-7 cells stained with EpCAM Mouse Recombinant Monoclonal Antibody (rMOC-31) followed by goat anti-mouse IgG-CF488 (blue); isotype control (red).





### **Novus Biologicals USA**

10730 E. Briarwood Avenue  
Centennial, CO 80112  
USA  
Phone: 303.730.1950  
Toll Free: 1.888.506.6887  
Fax: 303.730.1966  
nb-customerservice@bio-techne.com

### **Bio-Techne Canada**

21 Canmotor Ave  
Toronto, ON M8Z 4E6  
Canada  
Phone: 905.827.6400  
Toll Free: 855.668.8722  
Fax: 905.827.6402  
canada.inquires@bio-techne.com

### **Bio-Techne Ltd**

19 Barton Lane  
Abingdon Science Park  
Abingdon, OX14 3NB, United Kingdom  
Phone: (44) (0) 1235 529449  
Free Phone: 0800 37 34 15  
Fax: (44) (0) 1235 533420  
info.EMEA@bio-techne.com

### **General Contact Information**

[www.novusbio.com](http://www.novusbio.com)  
Technical Support: nb-technical@bio-techne.com  
Orders: nb-customerservice@bio-techne.com  
General: novus@novusbio.com

### **Products Related to NBP2-54521-100ug**

---

HAF007	Goat anti-Mouse IgG Secondary Antibody [HRP]
NB720-B	Rabbit anti-Mouse IgG (H+L) Secondary Antibody [Biotin]
NBP1-43319-0.5mg	Mouse IgG1 Kappa Isotype Control (P3.6.2.8.1)
NBP2-52190-0.05mg	Recombinant Human EpCAM/TROP1 His Protein

---

### **Limitations**

This product is for research use only and is not approved for use in humans or in clinical diagnosis. Primary Antibodies are guaranteed for 1 year from date of receipt.

For more information on our 100% guarantee, please visit [www.novusbio.com/guarantee](http://www.novusbio.com/guarantee)

Earn gift cards/discounts by submitting a review: [www.novusbio.com/reviews/submit/NBP2-54521](http://www.novusbio.com/reviews/submit/NBP2-54521)

Earn gift cards/discounts by submitting a publication using this product:  
[www.novusbio.com/publications](http://www.novusbio.com/publications)

