

Product Datasheet

CD3 epsilon Antibody (PC3/188A) [Alexa Fluor® 405] NBP2-54405AF405

Unit Size: 100 ul

Store at 4C in the dark.

www.novusbio.com



technical@novusbio.com

Reviews: 1

Protocols, Publications, Related Products, Reviews, Research Tools and Images at:
www.novusbio.com/NBP2-54405AF405

Updated 6/18/2024 v.20.1

Earn rewards for product
reviews and publications.

Submit a publication at www.novusbio.com/publications

Submit a review at www.novusbio.com/reviews/destination/NBP2-54405AF405



NBP2-54405AF405

CD3 epsilon Antibody (PC3/188A) [Alexa Fluor® 405]

Product Information	
Unit Size	100 ul
Concentration	Please see the vial label for concentration. If unlisted please contact technical services.
Storage	Store at 4C in the dark.
Clonality	Monoclonal
Clone	PC3/188A
Preservative	0.05% Sodium Azide
Isotype	IgG1
Conjugate	Alexa Fluor 405
Purity	Protein A or G purified
Buffer	50mM Sodium Borate
Product Description	
Host	Mouse
Gene ID	916
Gene Symbol	CD3E
Species	Human, Chimpanzee
Reactivity Notes	Others not known.
Marker	T-Cell Marker
Specificity/Sensitivity	Recognizes the epsilon-chain of CD3, which consists of five different polypeptide chains (designated as gamma, delta, epsilon, zeta, and eta) with MW ranging from 16-28kDa. The CD3 complex is closely associated at the lymphocyte cell surface with the T cell antigen receptor (TCR). Reportedly, CD3 complex is involved in signal transduction to the T cell interior following antigen recognition. The CD3 antigen is first detectable in early thymocytes and probably represents one of the earliest signs of commitment to the T cell lineage. In cortical thymocytes, CD3 is predominantly intra-cytoplasmic. However, in medullary thymocytes, it appears on the T cell surface. CD3 antigen is a highly specific marker for T cells, and is present in majority of T cell neoplasms.
Immunogen	A synthetic peptide corresponding to amino acids 156-168 of the cytoplasmic domain of human CD3- chain (Uniprot: P07766)



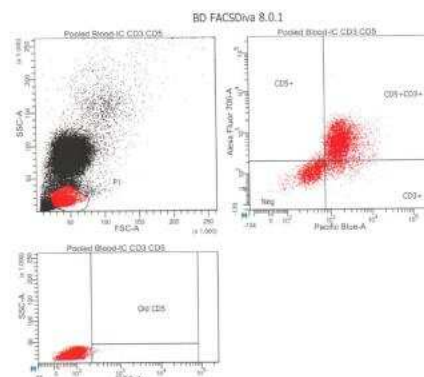
Notes	Alexa Fluor (R) products are provided under an intellectual property license from Life Technologies Corporation. The purchase of this product conveys to the buyer the non-transferable right to use the purchased product and components of the product only in research conducted by the buyer (whether the buyer is an academic or for-profit entity). The sale of this product is expressly conditioned on the buyer not using the product or its components, or any materials made using the product or its components, in any activity to generate revenue, which may include, but is not limited to use of the product or its components: (i) in manufacturing; (ii) to provide a service, information, or data in return for payment; (iii) for therapeutic, diagnostic or prophylactic purposes; or (iv) for resale, regardless of whether they are resold for use in research. For information on purchasing a license to this product for purposes other than as described above, contact Life Technologies Corporation, 5791 Van Allen Way, Carlsbad, CA 92008 USA or outlicensing@lifetech.com. This conjugate is made on demand. Actual recovery may vary from the stated volume of this product. The volume will be greater than or equal to the unit size stated on the datasheet.
--------------	--

Product Application Details

Applications	Western Blot, Flow Cytometry, Immunocytochemistry/ Immunofluorescence, CyTOF-ready, Immunohistochemistry (Negative)
Recommended Dilutions	Western Blot, Flow Cytometry, Immunocytochemistry/ Immunofluorescence, Immunohistochemistry (Negative), CyTOF-ready
Application Notes	Optimal dilution of this antibody should be experimentally determined. Flow Cytometry from a verified customer review.

Images

Flow Cytometry: CD3 epsilon Antibody (PC3/188A) [Alexa Fluor® 405] [NBP2-54405AF405] - Analysis with canine whole blood cells. From a verified customer review.





Novus Biologicals USA

10730 E. Briarwood Avenue
Centennial, CO 80112
USA
Phone: 303.730.1950
Toll Free: 1.888.506.6887
Fax: 303.730.1966
nb-customerservice@bio-techne.com

Bio-Techne Canada

21 Canmotor Ave
Toronto, ON M8Z 4E6
Canada
Phone: 905.827.6400
Toll Free: 855.668.8722
Fax: 905.827.6402
canada.inquires@bio-techne.com

Bio-Techne Ltd

19 Barton Lane
Abingdon Science Park
Abingdon, OX14 3NB, United Kingdom
Phone: (44) (0) 1235 529449
Free Phone: 0800 37 34 15
Fax: (44) (0) 1235 533420
info.EMEA@bio-techne.com

General Contact Information

www.novusbio.com
Technical Support: nb-technical@bio-techne.com
Orders: nb-customerservice@bio-techne.com
General: novus@novusbio.com

Products Related to NBP2-54405AF405

NBP1-97005AF405	Mouse IgG1 Isotype Control (MG1) [Alexa Fluor® 405]
NBP2-22752	Recombinant Human CD3 epsilon His Protein
210-TA-005	TNF-alpha [Unconjugated]
9850-CD-050	CD3 epsilon [Unconjugated]

Limitations

This product is for research use only and is not approved for use in humans or in clinical diagnosis. Primary Antibodies are guaranteed for 1 year from date of receipt.

For more information on our 100% guarantee, please visit www.novusbio.com/guarantee

Earn gift cards/discounts by submitting a review: www.novusbio.com/reviews/submit/NBP2-54405AF405

Earn gift cards/discounts by submitting a publication using this product:
www.novusbio.com/publications

