

# Product Datasheet

## CD3 epsilon Antibody (C3e/1308)

### NBP2-53387-100ug

Unit Size: 100 ug

Store at 4C.

[www.novusbio.com](http://www.novusbio.com)



[technical@novusbio.com](mailto:technical@novusbio.com)

#### Publications: 4

Protocols, Publications, Related Products, Reviews, Research Tools and Images at:  
[www.novusbio.com/NBP2-53387](http://www.novusbio.com/NBP2-53387)

Updated 7/16/2024 v.20.1

Earn rewards for product  
reviews and publications.

Submit a publication at [www.novusbio.com/publications](http://www.novusbio.com/publications)

Submit a review at [www.novusbio.com/reviews/destination/NBP2-53387](http://www.novusbio.com/reviews/destination/NBP2-53387)



**NBP2-53387-100ug**

CD3 epsilon Antibody (C3e/1308)

Product Information	
Unit Size	100 ug
Concentration	0.2 mg/ml
Storage	Store at 4C.
Clonality	Monoclonal
Clone	C3e/1308
Preservative	0.05% Sodium Azide
Isotype	IgG2b Kappa
Purity	Protein A or G purified
Buffer	10 mM PBS with 0.05% BSA
Target Molecular Weight	20 kDa

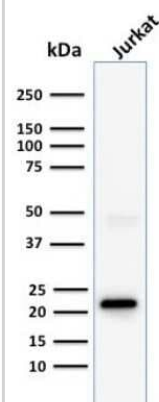
Product Description	
Description	200ug/ml of antibody purified from Bioreactor Concentrate by Protein A or G. Prepared in 10 mM PBS with 0.05% BSA & 0.05% azide. Also available WITHOUT BSA & azide at 1.0 mg/ml. (NBP2-54392)  Antibody with azide - store at 2 to 8C. Antibody without azide - store at -20 to -80C.
Host	Mouse
Gene ID	916
Gene Symbol	CD3E
Species	Human, Mouse
Reactivity Notes	Mouse reactivity reported in scientific literature (PMID: 33428661).
Marker	T-Cell Marker
Specificity/Sensitivity	Recognizes the epsilon-chain of CD3, which consists of five different polypeptide chains (designated as gamma, delta, epsilon, zeta, and eta) with MW ranging from 16-28kDa. The CD3 complex is closely associated at the lymphocyte cell surface with the T cell antigen receptor (TCR). Reportedly, CD3 complex is involved in signal transduction to the T cell interior following antigen recognition. The CD3 antigen is first detectable in early thymocytes and probably represents one of the earliest signs of commitment to the T cell lineage. In cortical thymocytes, CD3 is predominantly intra-cytoplasmic. However, in medullary thymocytes, it appears on the T cell surface. CD3 antigen is a highly specific marker for T cells, and is present in majority of T cell neoplasms.
Immunogen	Recombinant human CD3 epsilon fragment (aa 23-119) (Uniprot: P07766)

Product Application Details	
Applications	Western Blot, Flow Cytometry, Flow (Intracellular), Immunohistochemistry, Immunohistochemistry-Paraffin, Multiplex Immunoassay
Recommended Dilutions	Western Blot 1-2 ug/ml, Flow Cytometry 1-2 ug/million cells, Immunohistochemistry, Immunohistochemistry-Paraffin 1 - 2 ug/ml, Flow (Intracellular), Multiplex Immunoassay
Application Notes	Use in Multiplex Immunoassay reported in scientific literature (PMID: 31942075). Optimal dilution for a specific application should be determined. Western Blot: 1-2ug/ml for 60 minutes at RT.

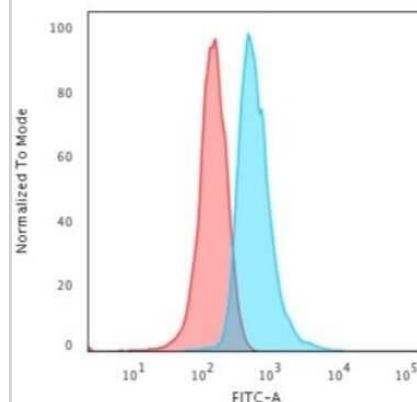


## Images

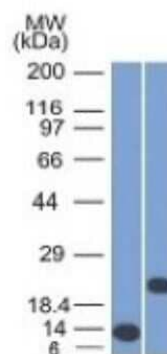
Western Blot: CD3 epsilon Antibody (C3e/1308) [NBP2-53387] - Western Blot Analysis of human Jurkat cell lysate using CD3 epsilon Antibody (C3e/1308).



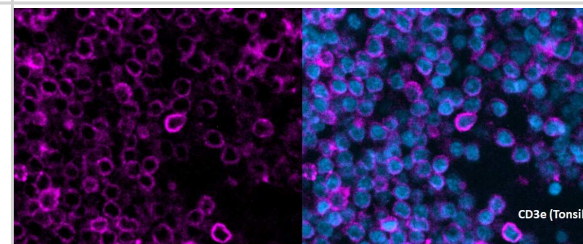
Flow Cytometry: CD3 epsilon Antibody (C3e/1308) [NBP2-53387] - Flow Cytometric Analysis of Jurkat cells using CD3 epsilon Antibody (C3e/1308) followed by Goat anti-Mouse IgG-CF488 (Blue); Isotype Control (Red).



Western Blot: CD3 epsilon Antibody (C3e/1308) [NBP2-53387] - Western Blot of recombinant CD3e and Jurkat Cell Lysate using CD3e Monoclonal Antibody (C3e/1308)



Immunohistochemistry-Paraffin: CD3 epsilon Antibody (C3e/1308) [NBP2-53387] - Staining of T cells in human FFPE tonsil tissue using AF647-conjugated CD3 epsilon Antibody (Catalog # NBP2-54392AF647). Antigen Retrieval at pH 9. Antibody incubation over night at 4C. Image from a verified customer review.



## Publications

L Xu, J Guo, DG Moledina, LG Cantley Immune-mediated tubule atrophy promotes acute kidney injury to chronic kidney disease transition Nature Communications, 2022-08-19;13(1):4892. 2022-08-19 [PMID: 35986026]

Koedijk J, van der Werf I, Vermeulen M et al. Spatial analysis reveals distinct immune phenotypes and tertiary lymphoid structure-like aggregates in pediatric acute myeloid leukemia medRxiv 2023-03-08

Details:

Citation using the version of this antibody.

Mashima K, Oh I, Fujiwara K, et al. Comparison of alemtuzumab, anti-thymocyte globulin, and post-transplant cyclophosphamide for graft-versus-host disease and graft-versus-leukemia in murine models PloS one 2021-01-11 [PMID: 33428661] (IF/IHC, Mouse)

Helmink BA, Reddy SM, Gao J et al. B cells and tertiary lymphoid structures promote immunotherapy response Nature. [PMID: 31942075] (MI, Human)





### **Novus Biologicals USA**

10730 E. Briarwood Avenue  
Centennial, CO 80112  
USA  
Phone: 303.730.1950  
Toll Free: 1.888.506.6887  
Fax: 303.730.1966  
nb-customerservice@bio-techne.com

### **Bio-Techne Canada**

21 Canmotor Ave  
Toronto, ON M8Z 4E6  
Canada  
Phone: 905.827.6400  
Toll Free: 855.668.8722  
Fax: 905.827.6402  
canada.inquires@bio-techne.com

### **Bio-Techne Ltd**

19 Barton Lane  
Abingdon Science Park  
Abingdon, OX14 3NB, United Kingdom  
Phone: (44) (0) 1235 529449  
Free Phone: 0800 37 34 15  
Fax: (44) (0) 1235 533420  
info.EMEA@bio-techne.com

### **General Contact Information**

[www.novusbio.com](http://www.novusbio.com)  
Technical Support: nb-technical@bio-techne.com  
Orders: nb-customerservice@bio-techne.com  
General: novus@novusbio.com

### **Products Related to NBP2-53387-100ug**

HAF007	Goat anti-Mouse IgG Secondary Antibody [HRP]
NB720-B	Rabbit anti-Mouse IgG (H+L) Secondary Antibody [Biotin]
NBP1-43317-0.5mg	Mouse IgG2b Kappa Light Chain Isotype Control (MG2b)
NBP2-22752	Recombinant Human CD3 epsilon His Protein

### **Limitations**

This product is for research use only and is not approved for use in humans or in clinical diagnosis. Primary Antibodies are guaranteed for 1 year from date of receipt.

For more information on our 100% guarantee, please visit [www.novusbio.com/guarantee](http://www.novusbio.com/guarantee)

Earn gift cards/discounts by submitting a review: [www.novusbio.com/reviews/submit/NBP2-53387](http://www.novusbio.com/reviews/submit/NBP2-53387)

Earn gift cards/discounts by submitting a publication using this product:  
[www.novusbio.com/publications](http://www.novusbio.com/publications)

