

Product Datasheet

Glycerol 3 Phosphate Dehydrogenase Antibody NBP2-53091

Unit Size: 100 ul

Aliquot and store at -20C or -80C. Avoid freeze-thaw cycles.

www.novusbio.com



technical@novusbio.com

Protocols, Publications, Related Products, Reviews, Research Tools and Images at:
www.novusbio.com/NBP2-53091

Updated 3/7/2021 v.20.1

Earn rewards for product
reviews and publications.

Submit a publication at www.novusbio.com/publications

Submit a review at www.novusbio.com/reviews/destination/NBP2-53091



NBP2-53091**Glycerol 3 Phosphate Dehydrogenase Antibody**

Product Information	
Unit Size	100 ul
Concentration	Concentrations vary lot to lot. See vial label for concentration. If unlisted please contact technical services.
Storage	Aliquot and store at -20C or -80C. Avoid freeze-thaw cycles.
Clonality	Polyclonal
Preservative	0.01% Thimerosal
Isotype	IgG
Purity	Immunogen affinity purified
Buffer	0.1M Tris (pH 7.0), 0.1M Glycine and 10% Glycerol

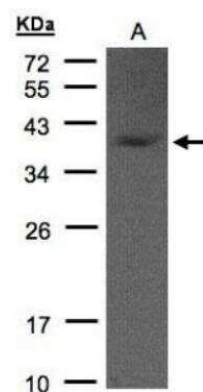
Product Description	
Host	Rabbit
Gene ID	2819
Gene Symbol	GPD1
Species	Human, Mouse
Immunogen	Recombinant protein encompassing a sequence within the center region of human GPD1. The exact sequence is proprietary.

Product Application Details	
Applications	Western Blot, Immunocytochemistry/Immunofluorescence, Immunohistochemistry, Immunohistochemistry-Paraffin
Recommended Dilutions	Western Blot 1:100 - 1:2000, Immunohistochemistry 1:10 - 1:500, Immunocytochemistry/Immunofluorescence 1:10 - 1:500, Immunohistochemistry-Paraffin 1:10 - 1:500

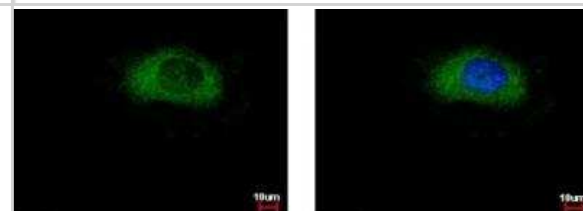


Images

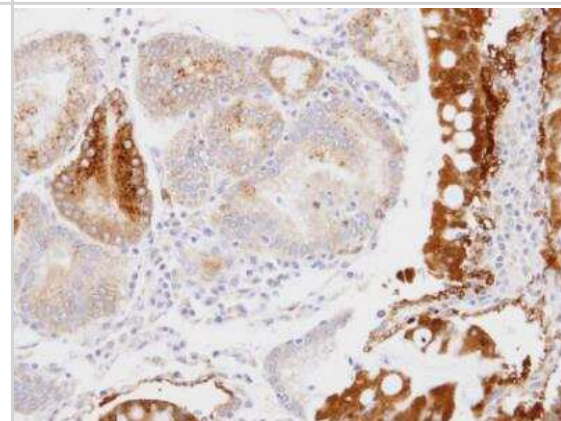
Western Blot: Glycerol 3 Phosphate Dehydrogenase Antibody [NBP2-53091] - Sample(30 ug of whole cell lysate) A:Hep G2 12% SDS PAGE, antibody diluted at 1:1000.



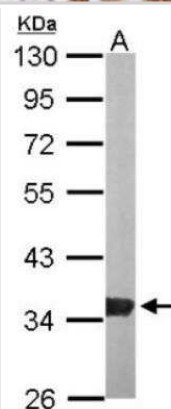
Immunocytochemistry/Immunofluorescence: Glycerol 3 Phosphate Dehydrogenase Antibody [NBP2-53091] - HeLa cells were fixed in 4% paraformaldehyde at RT for 15 min. Green: GPD1 protein stained by GPD1 antibody diluted at 1:500. Blue: Hoechst 33343 staining.



Immunohistochemistry-Paraffin: Glycerol 3 Phosphate Dehydrogenase Antibody [NBP2-53091] - Paraffin-embedded stomach, using antibody at 1:100 dilution.



Western Blot: Glycerol 3 Phosphate Dehydrogenase Antibody [NBP2-53091] - Sample (50 ug of whole cell lysate) A: Mouse brain 10% SDS PAGE; antibody diluted at 1:1000.





Novus Biologicals USA

10730 E. Briarwood Avenue
Centennial, CO 80112
USA
Phone: 303.730.1950
Toll Free: 1.888.506.6887
Fax: 303.730.1966
novus@novusbio.com

Bio-Techne Canada

21 Canmotor Ave
Toronto, ON M8Z 4E6
Canada
Phone: 905.827.6400
Toll Free: 855.668.8722
Fax: 905.827.6402
canada.inquires@bio-techne.com

Bio-Techne Ltd

19 Barton Lane
Abingdon Science Park
Abingdon, OX14 3NB, United Kingdom
Phone: (44) (0) 1235 529449
Free Phone: 0800 37 34 15
Fax: (44) (0) 1235 533420
info.EMEA@bio-techne.com

General Contact Information

www.novusbio.com
Technical Support: technical@novusbio.com
Orders: orders@novusbio.com
General: novus@novusbio.com

Limitations

This product is for research use only and is not approved for use in humans or in clinical diagnosis. Primary Antibodies are guaranteed for 1 year from date of receipt.

For more information on our 100% guarantee, please visit www.novusbio.com/guarantee

Earn gift cards/discounts by submitting a review: www.novusbio.com/reviews/submit/NBP2-53091

Earn gift cards/discounts by submitting a publication using this product:
www.novusbio.com/publications

