

# Product Datasheet

## Recombinant Human CNTF His Protein NBP2-53052-20ug

Unit Size: 20 ug

Store at 4C short term. Aliquot and store at -20C long term. Avoid freeze-thaw cycles.

[www.novusbio.com](http://www.novusbio.com)



[technical@novusbio.com](mailto:technical@novusbio.com)

Protocols, Publications, Related Products, Reviews, Research Tools and Images at:  
[www.novusbio.com/NBP2-53052](http://www.novusbio.com/NBP2-53052)

Updated 10/12/2023 v.20.1

Earn rewards for product  
reviews and publications.

Submit a publication at [www.novusbio.com/publications](http://www.novusbio.com/publications)

Submit a review at [www.novusbio.com/reviews/destination/NBP2-53052](http://www.novusbio.com/reviews/destination/NBP2-53052)

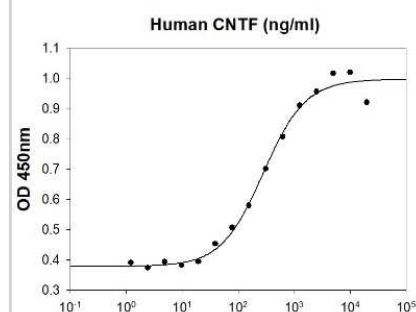


**NBP2-53052-20ug****Recombinant Human CNTF His Protein**

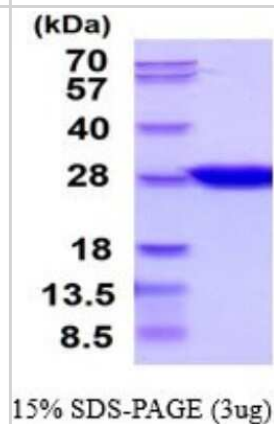
<b>Product Information</b>	
<b>Unit Size</b>	20 ug
<b>Concentration</b>	1 mg/ml
<b>Storage</b>	Store at 4C short term. Aliquot and store at -20C long term. Avoid freeze-thaw cycles.
<b>Preservative</b>	No Preservative
<b>Purity</b>	>95%, by SDS-PAGE
<b>Buffer</b>	20 mM Tris-HCl buffer (pH 8.5), 1 mM DTT, 30% Glycerol, 0.2 M NaCl
<b>Target Molecular Weight</b>	25 kDa
<b>Product Description</b>	
<b>Description</b>	<p>A bioactive recombinant protein with a N-Terminal His-tag and corresponding to the amino acids 1-200 of Human CNTF</p> <p><b>Source:</b> <i>E.coli</i></p> <p><b>Amino Acid Sequence:</b> MGSSHHHHHH SSGLVPRGSH MAFTEHSPLT PHRRDLCSRS IWLARKIRSD LTALTESYVK HQGLNKNINL DSADGMPVAS TDQWSELTEA ERLQENLQAY RTFHVLLARL LEDQQVHFTP TEGDFHQAIH TLLLQVAAFA YQIEELMILL EYKIPRNEAD GMPINVDGGL FEKKLWGLK VLQELSQWTV RSIHDLRFIS SHQTGIPARG SHYIANNKKM</p>
<b>Gene ID</b>	1270
<b>Gene Symbol</b>	CNTF
<b>Species</b>	Human
<b>Details of Functionality</b>	Human CNTF in a cell proliferation assay using TF-1 human erythroleukemic cell. The ED50 range is less than or equal to 1ug/ml.
<b>Endotoxin Note</b>	< 1.0 EU per 1 microgram of protein (determined by LAL method)
<b>Product Application Details</b>	
<b>Applications</b>	SDS-Page, Bioactivity
<b>Recommended Dilutions</b>	SDS-Page, Bioactivity

## Images

Bioactivity: Recombinant Human CNTF Protein [NBP2-53052] - Human CNTF in a cell proliferation assay using TF-1 human erythroleukemic cell. The ED50 range = 1ug/ml.



SDS-Page: Recombinant Human CNTF Protein [NBP2-53052] - 15% SDS-PAGE (3ug)





### **Novus Biologicals USA**

10730 E. Briarwood Avenue  
Centennial, CO 80112  
USA  
Phone: 303.730.1950  
Toll Free: 1.888.506.6887  
Fax: 303.730.1966  
novus@novusbio.com

### **Bio-Techne Canada**

21 Canmotor Ave  
Toronto, ON M8Z 4E6  
Canada  
Phone: 905.827.6400  
Toll Free: 855.668.8722  
Fax: 905.827.6402  
canada.inquires@bio-techne.com

### **Bio-Techne Ltd**

19 Barton Lane  
Abingdon Science Park  
Abingdon, OX14 3NB, United Kingdom  
Phone: (44) (0) 1235 529449  
Free Phone: 0800 37 34 15  
Fax: (44) (0) 1235 533420  
info.EMEA@bio-techne.com

### **General Contact Information**

www.novusbio.com  
Technical Support: technical@novusbio.com  
Orders: orders@novusbio.com  
General: novus@novusbio.com

### **Limitations**

This product is for research use only and is not approved for use in humans or in clinical diagnosis. This product is guaranteed for 1 year from date of receipt.

For more information on our 100% guarantee, please visit [www.novusbio.com/guarantee](http://www.novusbio.com/guarantee)

Earn gift cards/discounts by submitting a review: [www.novusbio.com/reviews/submit/NBP2-53052](http://www.novusbio.com/reviews/submit/NBP2-53052)

Earn gift cards/discounts by submitting a publication using this product:  
[www.novusbio.com/publications](http://www.novusbio.com/publications)

