

Product Datasheet

Emerin Antibody (CL0203) - BSA Free NBP2-52877

Unit Size: 0.1 ml

Store at 4C short term. Aliquot and store at -20C long term. Avoid freeze-thaw cycles.

www.novusbio.com



technical@novusbio.com

Publications: 1

Protocols, Publications, Related Products, Reviews, Research Tools and Images at:
www.novusbio.com/NBP2-52877

Updated 9/9/2025 v.20.1

Earn rewards for product
reviews and publications.

Submit a publication at www.novusbio.com/publications

Submit a review at www.novusbio.com/reviews/destination/NBP2-52877



NBP2-52877

Emerin Antibody (CL0203) - BSA Free

Product Information

Unit Size	0.1 ml
Concentration	Concentrations vary lot to lot. See vial label for concentration. If unlisted please contact technical services.
Storage	Store at 4C short term. Aliquot and store at -20C long term. Avoid freeze-thaw cycles.
Clonality	Monoclonal
Clone	CL0203
Preservative	0.02% Sodium Azide
Isotype	IgG1
Purity	Protein A purified
Buffer	PBS (pH 7.2) and 40% Glycerol

Product Description

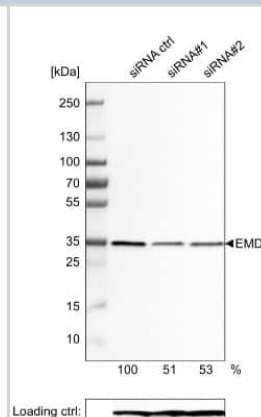
Description	Novus Biologicals Mouse Emerin Antibody (CL0203) - BSA Free (NBP2-52877) is a monoclonal antibody validated for use in IHC, WB and ICC/IF. Anti-Emerin Antibody: Cited in 1 publication. All Novus Biologicals antibodies are covered by our 100% guarantee.
Host	Mouse
Gene ID	2010
Gene Symbol	EMD
Species	Human
Immunogen	This antibody was developed using a recombinant protein derived from P50402, with the exact immunogen sequence remaining proprietary.

Product Application Details

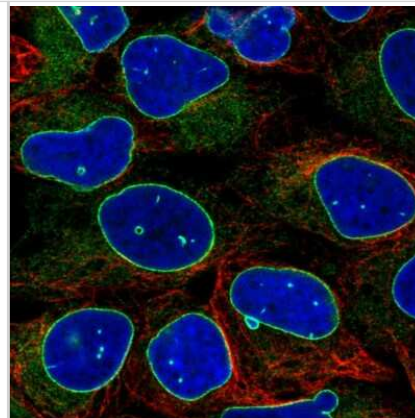
Applications	Western Blot, Immunohistochemistry-Paraffin, Immunocytochemistry/Immunofluorescence, Immunohistochemistry, Knockdown Validated
Recommended Dilutions	Western Blot 1 ug/ml, Immunohistochemistry 1:5000 - 1:10000, Immunocytochemistry/ Immunofluorescence 2-10 ug/ml, Immunohistochemistry-Paraffin 1:5000 - 1:10000, Knockdown Validated
Application Notes	For IHC-Paraffin, HIER pH 6 retrieval is recommended. ICC/IF Fixation Permeabilization: Use PFA/Triton X-100.

Images

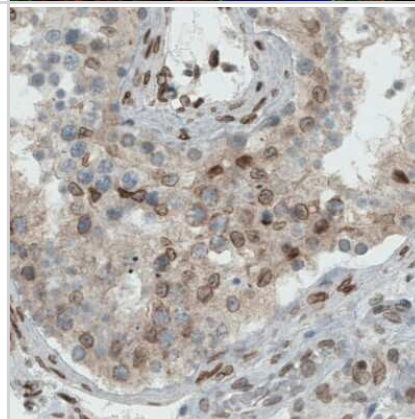
Western Blot: Emerin Antibody (CL0203) [NBP2-52877] - Analysis of extracts from RT-4 cells, transfected with: control siRNA, target specific siRNA probe #1, target specific siRNA probe #2, using Anti-EMD monoclonal antibody. Downregulation of antibody signal confirms target specificity. Remaining % intensity



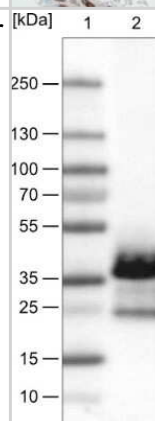
Immunocytochemistry/Immunofluorescence: Emerin Antibody (CL0203) [NBP2-52877] - Staining in U2OS cell line with Anti-EMD monoclonal antibody, shows a distinct nuclear membranous pattern with a weaker additional ER staining in green. Microtubule- and nuclear probes are visualized in red and blue respectively (where available). Antibody staining is shown in green.



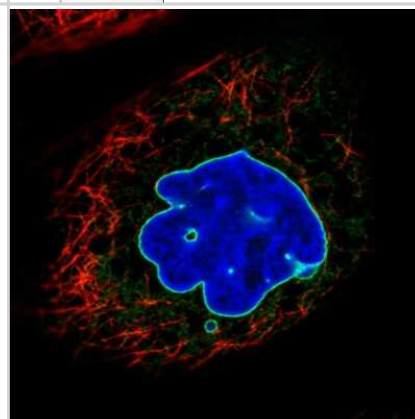
Immunohistochemistry-Paraffin: Emerin Antibody (CL0203) [NBP2-52877] - Staining of human testis shows nuclear membrane immunoreactivity.



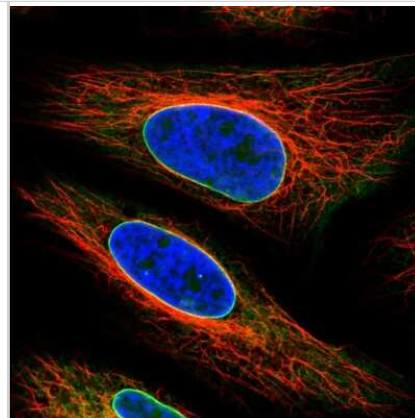
Western Blot: Emerin Antibody (CL0203) [NBP2-52877] - Lane 1: Marker [kDa], Lane 2: RT-4



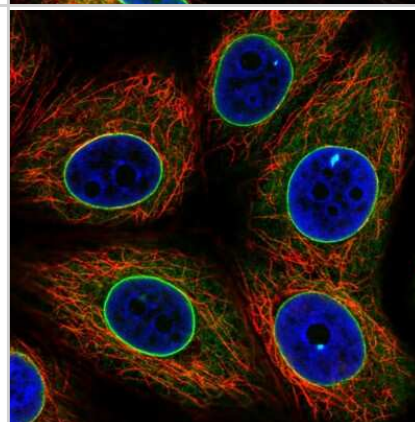
Immunocytochemistry/Immunofluorescence: Emerin Antibody (CL0203) [NBP2-52877] - Staining in A431 cell line with Anti-EMD monoclonal antibody, shows a distinct nuclear membranous pattern with a weaker additional ER staining in green. Microtubule- and nuclear probes are visualized in red and blue respectively (where available). Antibody staining is shown in green.



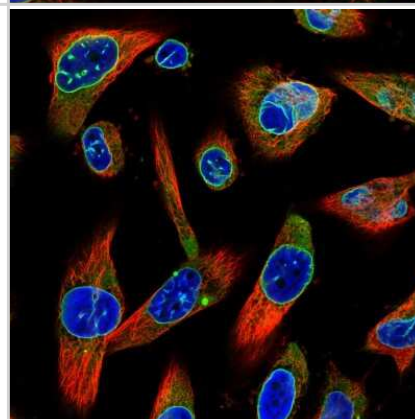
Immunocytochemistry/Immunofluorescence: Emerin Antibody (CL0203) [NBP2-52877] - Staining in HeLa cell line with Anti-EMD monoclonal antibody, shows a distinct nuclear membranous pattern with a weaker additional ER staining in green. Microtubule- and nuclear probes are visualized in red and blue respectively (where available). Antibody staining is shown in green.



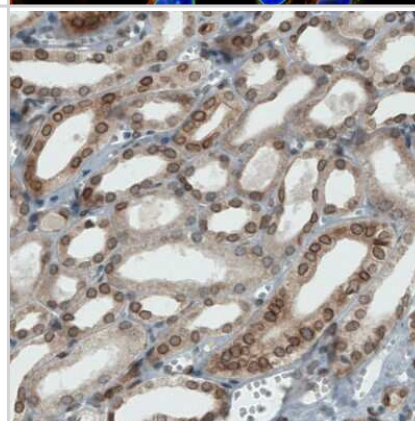
Immunocytochemistry/Immunofluorescence: Emerin Antibody (CL0203) [NBP2-52877] - Staining in MCF7 cell line with Anti-EMD monoclonal antibody, shows a distinct nuclear membranous pattern with a weaker additional ER staining in green. Microtubule- and nuclear probes are visualized in red and blue respectively (where available). Antibody staining is shown in green.



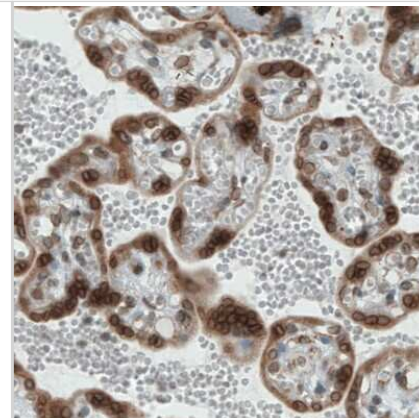
Immunocytochemistry/Immunofluorescence: Emerin Antibody (CL0203) [NBP2-52877] - Staining in U251 cell line with Anti-EMD monoclonal antibody, shows a distinct nuclear membranous pattern with a weaker additional ER staining in green. Microtubule- and nuclear probes are visualized in red and blue respectively (where available). Antibody staining is shown in green.



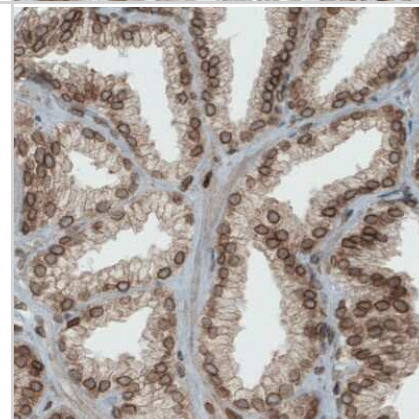
Immunohistochemistry-Paraffin: Emerin Antibody (CL0203) [NBP2-52877] - Staining of human kidney shows nuclear membrane positivity in renal tubules.



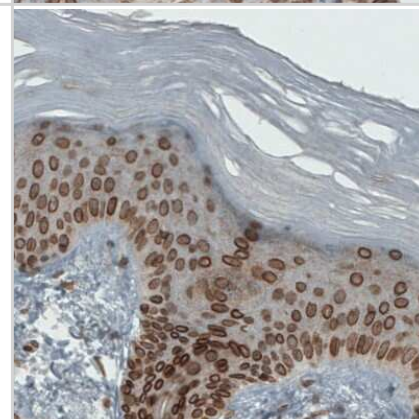
Immunohistochemistry-Paraffin: Emerin Antibody (CL0203) [NBP2-52877] - Staining of human placenta shows strong nuclear membrane positivity in the trophoblast.



Immunohistochemistry-Paraffin: Emerin Antibody (CL0203) [NBP2-52877] - Staining of human prostate shows strong nuclear membrane immunoreactivity in glandular cells.



Immunohistochemistry-Paraffin: Emerin Antibody (CL0203) [NBP2-52877] - Staining of human skin shows strong nuclear membrane positivity in the epidermis cells.



Publications

Neggers JE, Paoletta BR, Asfaw A et al. Synthetic Lethal Interaction between the ESCRT Paralog Enzymes VPS4A and VPS4B in Cancers Harboring Loss of Chromosome 18q or 16q Cell reports 2020-12-15 [PMID: 33326793] (ICC/IF, Human)



Novus Biologicals USA

10730 E. Briarwood Avenue
Centennial, CO 80112
USA
Phone: 303.730.1950
Toll Free: 1.888.506.6887
Fax: 303.730.1966
nb-customerservice@bio-techne.com

Bio-Techne Canada

21 Canmotor Ave
Toronto, ON M8Z 4E6
Canada
Phone: 905.827.6400
Toll Free: 855.668.8722
Fax: 905.827.6402
canada.inquires@bio-techne.com

Bio-Techne Ltd

19 Barton Lane
Abingdon Science Park
Abingdon, OX14 3NB, United Kingdom
Phone: (44) (0) 1235 529449
Free Phone: 0800 37 34 15
Fax: (44) (0) 1235 533420
info.EMEA@bio-techne.com

General Contact Information

www.novusbio.com
Technical Support: nb-technical@bio-techne.com
Orders: nb-customerservice@bio-techne.com
General: novus@novusbio.com

Products Related to NBP2-52877

NBP2-52877PEP	Emerin Recombinant Protein Antigen
HAF007	Goat anti-Mouse IgG Secondary Antibody [HRP]
NB720-B	Rabbit anti-Mouse IgG (H+L) Secondary Antibody [Biotin]
NBP1-97005-0.5mg	Mouse IgG1 Isotype Control (MG1)

Limitations

This product is for research use only and is not approved for use in humans or in clinical diagnosis. Primary Antibodies are guaranteed for 1 year from date of receipt.

For more information on our 100% guarantee, please visit www.novusbio.com/guarantee

Earn gift cards/discounts by submitting a review: www.novusbio.com/reviews/submit/NBP2-52877

Earn gift cards/discounts by submitting a publication using this product:
www.novusbio.com/publications

