

Product Datasheet

ER Stress / UPR Antibody Pack

NBP2-52746

Unit Size: 8 Vials

Store at 4°C.

www.novusbio.com



technical@novusbio.com

Publications: 1

Protocols, Publications, Related Products, Reviews, Research Tools and Images at:
www.novusbio.com/NBP2-52746

Updated 4/13/2025 v.20.1

Earn rewards for product
reviews and publications.

Submit a publication at www.novusbio.com/publications

Submit a review at www.novusbio.com/reviews/destination/NBP2-52746



NBP2-52746**ER Stress / UPR Antibody Pack****Product Information**

Unit Size	8 Vials
Concentration	Concentration of individual antibodies may be found on the vial label. If unlisted please contact technical services.
Storage	Store at 4°C.

Product Description

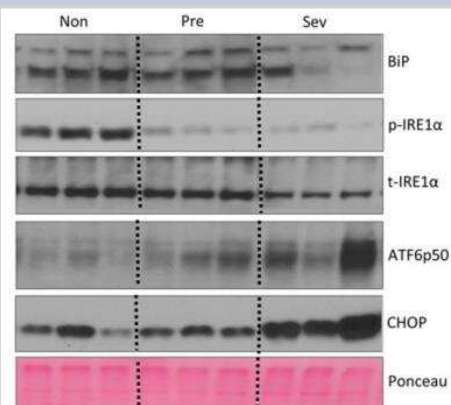
Description	<p>This UPR / ER Stress Sampler Kit is an antibody pack containing sample size vials of the top markers namely: GRP78/HSPA5, pSer724 IRE1 alpha, total IRE1 alpha, XBP1, ATF6, and CHOP/GADD153.</p> <p>This pack contains 1 vial each of: NBP1-06277SS (0.025 mL), NB100-2323SS (0.025 mL), NB100-2324SS (0.025 mL), NBP1-77681SS (0.025 mL), NBP1-40256SS (0.025 mg), NBP2-13172-0.025ml (0.025 mL), HAF007 and HAF008.</p>
Species	Human, Mouse, Rat
Reactivity Notes	See individual datasheets of components for their validated species
Immunogen	See individual datasheets.
Kit Components	NBP2-13172-0.025ml, NBP1-06277SS, NB100-2323SS, NB100-2324SS, NBP1-77681SS, NBP1-40256SS, HAF007: Goat anti-Mouse IgG Secondary Antibody [HRP], HAF008: Goat anti-Rabbit IgG Secondary Antibody [HRP]

Product Application Details

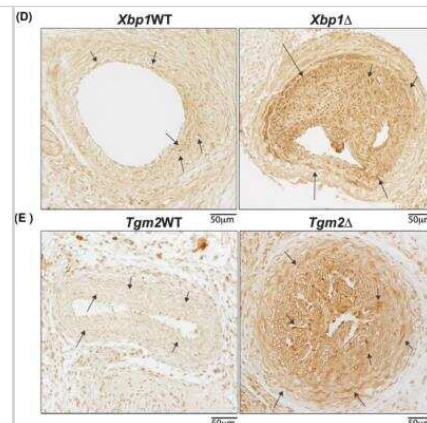
Applications	Western Blot, Immunocytochemistry/ Immunofluorescence, Immunohistochemistry, Immunohistochemistry-Paraffin
Recommended Dilutions	Western Blot, Immunohistochemistry, Immunocytochemistry/ Immunofluorescence, Immunohistochemistry-Paraffin
Application Notes	See individual datasheets of components for their validated applications

Images

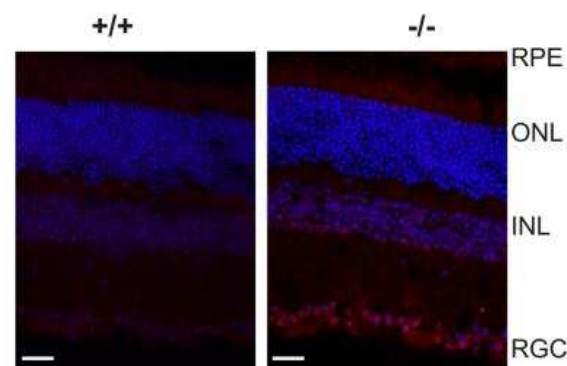
Western Blot: ER Stress / UPR Antibody Pack [NBP2-52746] - Hepatic ER stress markers with cachexia progression. ER stress markers Bip, IRE1a, ATF6p50 and CHOP were examined in the liver of non, pre and severely cachectic mice. (n = 6-8 per group, p < 0.05) Dotted line indicates levels of Non-cachectic mice. Non = Non-Cachectic Apc Min/+ Sev = severely cachectic Apc Min/+; * denotes significantly different from Non-cachectic Apc Min/+ Image collected and cropped by CiteAb from the following publication ([//doi.org/10.1371/journal.pone.0119888](https://doi.org/10.1371/journal.pone.0119888)) licensed under a CC-BY license. IRE1 alpha [p Ser724] Antibody [NB100-2323]



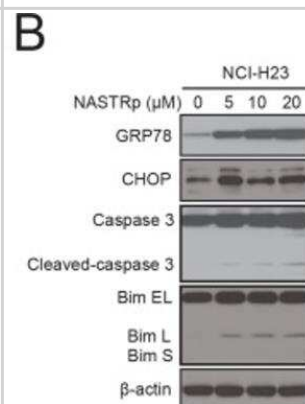
Immunohistochemistry: ER Stress / UPR Antibody Pack [NBP2-52746] - XBP1 and TG2 deficiency promote increased IRE1a protein levels in cultured VSMCs and in neointima in situ. (D) Xbp1WT and Xbp1 delta WT and (E) Tgm2 WT and Tgm2 delta carotid artery sections were analyzed by IHC for total IRE1a. Image collected and cropped by CiteAb from the following publication ([//doi.org/10.1371/journal.pone.0212235](https://doi.org/10.1371/journal.pone.0212235)) licensed under a CC-BY license. IRE1 alpha Antibody [NB100-2324]



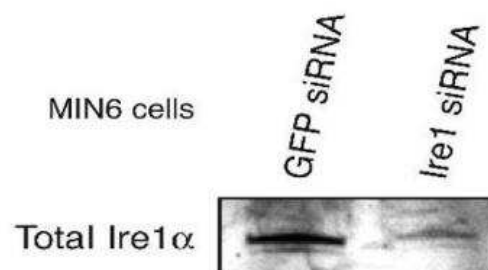
Immunohistochemistry: ER Stress / UPR Antibody Pack [NBP2-52746] - P-Ire1a activation correlates with Wfs1 cell expression. Cryosections of retina from 12 month old Wfs1+/+ and Wfs1-/- mouse were immunostained with anti-P-Ire1a antibody (red). DAPI was used for staining of cell nuclei (blue). RPE, retinal pigment epithelium; ONL, outer nuclear layer; INL, inner nuclear layer, RGC, retinal ganglion cells. Scale bars=50 μm. Image collected and cropped by CiteAb from the following publication ([//doi.org/10.1371/journal.pone.0097222](https://doi.org/10.1371/journal.pone.0097222)) licensed under a CC-BY license.



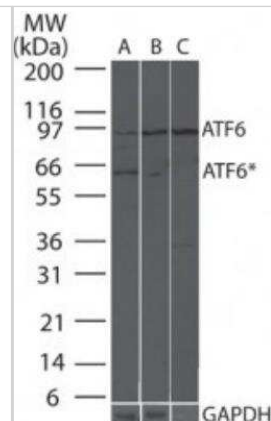
Western Blot: ER Stress / UPR Antibody Pack [NBP2-52746] - NASTRp induces ER stress and eventually leads to cell death with Bim up-regulation. NASTRp induced ER stress and activated UPR led to apoptosis with Bim induction in NSCLC cell lines. Cells were treated with the indicated concentrations of NASTRp for 24 hours and cell lysates were subjected to SDS-PAGE/Western blot analysis using the indicated antibodies. Image collected and cropped by CiteAb from the following publication ([//doi.org/10.1371/journal.pone.0122628](https://doi.org/10.1371/journal.pone.0122628)) licensed under a CC-BY license. GADD153/CHOP Antibody [NBP2-13172]



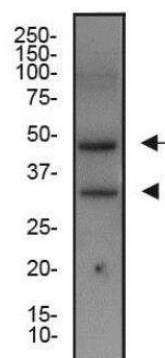
Western Blot: ER Stress / UPR Antibody Pack [NBP2-52746] - WB detection of total IRE1 alpha protein in lysates from Min6 cells which were transfected with GFP-siRNA or Ire1-siRNA.



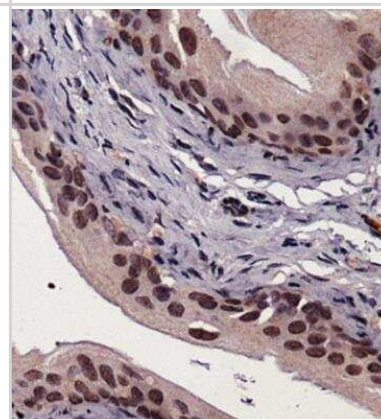
Western Blot: ER Stress / UPR Antibody Pack [NBP2-52746] - WB analysis of 293 cells transfected with full-length ATF6 (Lane 1), or with partial length amino acids 1-373 of ATF6 (Lane 2), and the non-transfected control cells (Lane 3). The ATF6* band is possibly an under-glycosylated or cleaved/active ATF6.



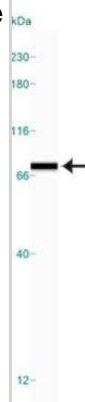
Western Blot: ER Stress / UPR Antibody Pack [NBP2-52746] - Total protein from HeLa cells was separated on a 12% gel by SDS-PAGE, transferred to PVDF membrane and blocked in 5% non-fat milk in TBST. The membrane was probed with 1.0 ug/ml anti-XBP1 ([NBP1-77681]) in block buffer and detected with an anti-rabbit HRP secondary antibody using chemiluminescence. Arrow delineates XBP1s and arrowhead XBP1u.



Immunohistochemistry-Paraffin: ER Stress / UPR Antibody Pack [NBP2-52746] - IHC analysis of a formalin fixed and paraffin embedded tissue section of mouse bladder using XBP1 antibody ([NBP1-77681]) with HRP-DAB detection and hematoxylin counterstaining.



Simple Western: ER Stress / UPR Antibody Pack [NBP2-52746] - Simple Western lane view shows a specific band for GRP78/HSPA5 in 1.0 mg/ml of HeLa lysate. This experiment was performed under reducing conditions using the 12-230kDa separation system.



Publications

Arnold F, Burns M, Chiu Y et al. Chronic BMAA exposure combined with TDP-43 mutation elicits motor neuron dysfunction phenotypes in mice Neurobiology of Aging 2023-02-01 [PMID: 36931113] (WB, Mouse)



Novus Biologicals USA

10730 E. Briarwood Avenue
Centennial, CO 80112
USA
Phone: 303.730.1950
Toll Free: 1.888.506.6887
Fax: 303.730.1966
nb-customerservice@bio-techne.com

Bio-Techne Canada

21 Canmotor Ave
Toronto, ON M8Z 4E6
Canada
Phone: 905.827.6400
Toll Free: 855.668.8722
Fax: 905.827.6402
canada.inquires@bio-techne.com

Bio-Techne Ltd

19 Barton Lane
Abingdon Science Park
Abingdon, OX14 3NB, United Kingdom
Phone: (44) (0) 1235 529449
Free Phone: 0800 37 34 15
Fax: (44) (0) 1235 533420
info.EMEA@bio-techne.com

General Contact Information

www.novusbio.com
Technical Support: nb-technical@bio-techne.com
Orders: nb-customerservice@bio-techne.com
General: novus@novusbio.com

Limitations

This product is for research use only and is not approved for use in humans or in clinical diagnosis. Antibody Packs are guaranteed for 1 year from date of receipt.

For more information on our 100% guarantee, please visit www.novusbio.com/guarantee

Earn gift cards/discounts by submitting a review: www.novusbio.com/reviews/submit/NBP2-52746

Earn gift cards/discounts by submitting a publication using this product:
www.novusbio.com/publications

