

Product Datasheet

Recombinant Mouse Lactate Dehydrogenase A/LDHA His Protein

NBP2-52341-0.01mg

Unit Size: 0.01 mg

Store at 4C short term. Aliquot and store at -20C long term. Avoid freeze-thaw cycles.

www.novusbio.com



technical@novusbio.com

Protocols, Publications, Related Products, Reviews, Research Tools and Images at:
www.novusbio.com/NBP2-52341

Updated 10/12/2023 v.20.1

Earn rewards for product reviews and publications.

Submit a publication at www.novusbio.com/publications

Submit a review at www.novusbio.com/reviews/destination/NBP2-52341



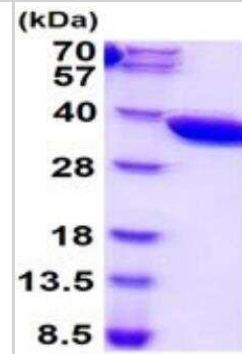
NBP2-52341-0.01mg**Recombinant Mouse Lactate Dehydrogenase A/LDHA His Protein**

Product Information	
Unit Size	0.01 mg
Concentration	0.5 mg/ml
Storage	Store at 4C short term. Aliquot and store at -20C long term. Avoid freeze-thaw cycles.
Preservative	No Preservative
Purity	>95%, by SDS-PAGE
Buffer	PBS (pH 7.4), 10% glycerol
Target Molecular Weight	37.5 kDa
Product Description	
Description	<p>A bioactive recombinant protein with a C-Terminal His-tag and corresponding to the amino acids 1-332 of Mouse Lactate Dehydrogenase A/LDHA</p> <p>Source: <i>Baculovirus</i></p> <p>Amino Acid Sequence: MATLKDQLIV NLLKEEQAPQ NKITVVGVGA VGMACAISIL MKDLADELAL VDVMEKDLKG EEMDLQHGSL FLKTPKIVSS KDYCVTANSK LVIITAGARQ QEGESRLNLV QRNVNIFKFI IPNIVKYSPH CKLLIVSNPV DILTYVAWKI SGFPKNRVIG SGCNLD SARF RYLMGERLGV HALSCHGWVL GEHGDSSVPV WSGVNVAGVS LKSLNPELGT DADKEQWKEV HKQVVD SAYE VIKLKG YTSW AIGLSVADLA ESIMKNLRRV HPISTMIKGL YGINEDVFLS VPCILGQNGI SDVVKVTLTP EEEARLKKSA DTLWGIQKEL QFLEHHHHHH</p>
Gene ID	3939
Gene Symbol	LDHA
Species	Mouse
Details of Functionality	Specific activity is > 250 units/mg, and is defined as the Amount of enzyme that convert 1.0 umole of pyruvate to L-lactate and per minute at pH 7.5 at 37C.
Endotoxin Note	< 1.0 EU per 1 microgram of protein (determined by LAL method)
Product Application Details	
Applications	SDS-Page, Enzyme Activity
Recommended Dilutions	SDS-Page, Enzyme Activity



Images

SDS-Page: Recombinant Mouse Lactate Dehydrogenase A/LDHA Protein [NBP2-52341]



15% SDS-PAGE (3ug)



Novus Biologicals USA

10730 E. Briarwood Avenue
Centennial, CO 80112
USA
Phone: 303.730.1950
Toll Free: 1.888.506.6887
Fax: 303.730.1966
novus@novusbio.com

Bio-Techne Canada

21 Canmotor Ave
Toronto, ON M8Z 4E6
Canada
Phone: 905.827.6400
Toll Free: 855.668.8722
Fax: 905.827.6402
canada.inquires@bio-techne.com

Bio-Techne Ltd

19 Barton Lane
Abingdon Science Park
Abingdon, OX14 3NB, United Kingdom
Phone: (44) (0) 1235 529449
Free Phone: 0800 37 34 15
Fax: (44) (0) 1235 533420
info.EMEA@bio-techne.com

General Contact Information

www.novusbio.com
Technical Support: technical@novusbio.com
Orders: orders@novusbio.com
General: novus@novusbio.com

Limitations

This product is for research use only and is not approved for use in humans or in clinical diagnosis. This product is guaranteed for 1 year from date of receipt.

For more information on our 100% guarantee, please visit www.novusbio.com/guarantee

Earn gift cards/discounts by submitting a review: www.novusbio.com/reviews/submit/NBP2-52341

Earn gift cards/discounts by submitting a publication using this product:
www.novusbio.com/publications

