

# Product Datasheet

## Recombinant Human Sorbitol Dehydrogenase Protein NBP2-52293-0.01mg

Unit Size: 0.01 mg

Store at 4C short term. Aliquot and store at -20C long term. Avoid freeze-thaw cycles.

[www.novusbio.com](http://www.novusbio.com)



[technical@novusbio.com](mailto:technical@novusbio.com)

Protocols, Publications, Related Products, Reviews, Research Tools and Images at:  
[www.novusbio.com/NBP2-52293](http://www.novusbio.com/NBP2-52293)

Updated 5/19/2021 v.20.1

Earn rewards for product  
reviews and publications.

Submit a publication at [www.novusbio.com/publications](http://www.novusbio.com/publications)

Submit a review at [www.novusbio.com/reviews/destination/NBP2-52293](http://www.novusbio.com/reviews/destination/NBP2-52293)

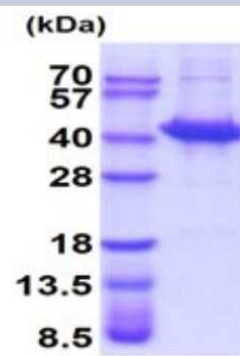


**NBP2-52293-0.01mg****Recombinant Human Sorbitol Dehydrogenase Protein**

<b>Product Information</b>	
<b>Unit Size</b>	0.01 mg
<b>Concentration</b>	0.5 mg/ml
<b>Storage</b>	Store at 4C short term. Aliquot and store at -20C long term. Avoid freeze-thaw cycles.
<b>Preservative</b>	No Preservative
<b>Purity</b>	>90%, by SDS-PAGE
<b>Buffer</b>	20 mM Tris-HCl buffer (pH 8.5), 10% glycerol, 1 mM DTT
<b>Target Molecular Weight</b>	38.3 kDa
<b>Product Description</b>	
<b>Description</b>	<p>An un-tagged recombinant protein corresponding to the amino acids 1-357 of Human Sorbitol Dehydrogenase</p> <p><b>Source:</b> <i>E.coli</i></p> <p><b>Amino Acid Sequence:</b> MAAAAPNNL SLVVHGPDDL RLENYPIPEP GPNEVLLRMH SVGICGSDVH YWEYGRIGNF IVKKPMVLGH EASGTVEKVG SSVKHLKPGD RVAIEPGAPR ENDEFCKMGR YNLSPSIFFC ATPPDDGNLC RFYKHNA AFC YKLPDNTFE EGALIEPLSV GIHACRRGGV TLGHKVLVCG AGPIGMVTLL VAKAMGAAQV VVTDLSATRL SKAKEIGADL VLQISKES PQ EIARKVEGQL GCKPEVTIEC TGAEASIQAG IYATRSGGTL VLVGLGSEMT TVPLLHAAIR EVDIKGVFRY CNTWPVAISM LASKSVNVKP LVTHRFPLEK ALEAFETFKK GLGLKIMLKC DPSDQNP</p>
<b>Gene ID</b>	6652
<b>Gene Symbol</b>	SORD
<b>Species</b>	Human
<b>Details of Functionality</b>	Specific activity is > 15 units/mg, and is defined as the amount of enzyme that catalyze the reduction 1.0 umole of D-fructose to D-sorbitol per minute at pH 7.5 at 37C.
<b>Product Application Details</b>	
<b>Applications</b>	SDS-Page, Enzyme Activity
<b>Recommended Dilutions</b>	SDS-Page, Enzyme Activity

## Images

SDS-Page: Sorbitol Dehydrogenase Recombinant Protein [NBP2-52293]  
- 15% SDS Page (3 ug)



15% SDS-PAGE (3ug)



### **Novus Biologicals USA**

10730 E. Briarwood Avenue  
Centennial, CO 80112  
USA  
Phone: 303.730.1950  
Toll Free: 1.888.506.6887  
Fax: 303.730.1966  
novus@novusbio.com

### **Bio-Techne Canada**

21 Canmotor Ave  
Toronto, ON M8Z 4E6  
Canada  
Phone: 905.827.6400  
Toll Free: 855.668.8722  
Fax: 905.827.6402  
canada.inquires@bio-techne.com

### **Bio-Techne Ltd**

19 Barton Lane  
Abingdon Science Park  
Abingdon, OX14 3NB, United Kingdom  
Phone: (44) (0) 1235 529449  
Free Phone: 0800 37 34 15  
Fax: (44) (0) 1235 533420  
info.EMEA@bio-techne.com

### **General Contact Information**

www.novusbio.com  
Technical Support: technical@novusbio.com  
Orders: orders@novusbio.com  
General: novus@novusbio.com

### **Products Related to NBP2-52293-0.01mg**

---

NBP1-44460	Recombinant Human Sorbitol Dehydrogenase His Protein
MAB1455	Albumin Antibody (188835) [Unconjugated] - Serum
NBP1-87416	Sorbitol Dehydrogenase Antibody
DY262	Amphiregulin [Biotin]

---

### **Limitations**

This product is for research use only and is not approved for use in humans or in clinical diagnosis. This product is guaranteed for 1 year from date of receipt.

For more information on our 100% guarantee, please visit [www.novusbio.com/guarantee](http://www.novusbio.com/guarantee)

Earn gift cards/discounts by submitting a review: [www.novusbio.com/reviews/submit/NBP2-52293](http://www.novusbio.com/reviews/submit/NBP2-52293)

Earn gift cards/discounts by submitting a publication using this product:  
[www.novusbio.com/publications](http://www.novusbio.com/publications)

