

# Product Datasheet

## Recombinant Human NM23-H2/NME2 Protein NBP2-52251-0.02mg

Unit Size: 0.02 mg

Store at 4C short term. Aliquot and store at -20C long term. Avoid freeze-thaw cycles.

[www.novusbio.com](http://www.novusbio.com)



[technical@novusbio.com](mailto:technical@novusbio.com)

Protocols, Publications, Related Products, Reviews, Research Tools and Images at:  
[www.novusbio.com/NBP2-52251](http://www.novusbio.com/NBP2-52251)

Updated 10/12/2023 v.20.1

Earn rewards for product  
reviews and publications.

Submit a publication at [www.novusbio.com/publications](http://www.novusbio.com/publications)

Submit a review at [www.novusbio.com/reviews/destination/NBP2-52251](http://www.novusbio.com/reviews/destination/NBP2-52251)



**NBP2-52251-0.02mg**

Recombinant Human NM23-H2/NME2 Protein

**Product Information**

<b>Unit Size</b>	0.02 mg
<b>Concentration</b>	1 mg/ml
<b>Storage</b>	Store at 4C short term. Aliquot and store at -20C long term. Avoid freeze-thaw cycles.
<b>Preservative</b>	No Preservative
<b>Purity</b>	>90%, by SDS-PAGE
<b>Buffer</b>	20 mM Tris-HCl buffer (pH8.0), 1 mM DTT, 10% glycerol
<b>Target Molecular Weight</b>	17.2 kDa

**Product Description**

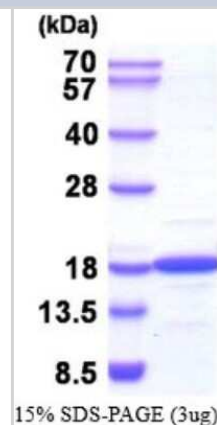
<b>Description</b>	<p>An un-tagged recombinant protein corresponding to the amino acids 1-152 of Human NM23-H2/NME2</p> <p><b>Source:</b> <i>E.coli</i></p> <p><b>Amino Acid Sequence:</b> MANLERTFIA IKPDGVQRGL VGEIIKRFEQ KGFRLVAMKF LRASEEHLKQ HYIDLKDRPF FPGLVKYMNS GPVVAMVWEG LNVVKTGRVM LGETNPADSK PGTIRGDFCI QVGRNIIHGS DSVKSAEKEI SLWFKPEELV DYKSCAHDWV YE</p>
<b>Gene ID</b>	4831
<b>Gene Symbol</b>	NME2
<b>Species</b>	Human
<b>Details of Functionality</b>	Specific activity is > 1,800 units/mg, and is defined as the amount of enzyme that convert 1.0 umole each of ATP and TDP to ADP and TTP per minute at pH 7.5 at 25C in a couple system with PK/LDH.

**Product Application Details**

<b>Applications</b>	SDS-Page, Enzyme Activity
<b>Recommended Dilutions</b>	SDS-Page, Enzyme Activity

**Images**

SDS-Page: NM23-H2/NME2 Recombinant Protein [NBP2-52251] - 15%  
SDS Page (3 ug)





### **Novus Biologicals USA**

10730 E. Briarwood Avenue  
Centennial, CO 80112  
USA

Phone: 303.730.1950  
Toll Free: 1.888.506.6887  
Fax: 303.730.1966  
novus@novusbio.com

### **Bio-Techne Canada**

21 Canmotor Ave  
Toronto, ON M8Z 4E6  
Canada

Phone: 905.827.6400  
Toll Free: 855.668.8722  
Fax: 905.827.6402  
canada.inquires@bio-techne.com

### **Bio-Techne Ltd**

19 Barton Lane  
Abingdon Science Park  
Abingdon, OX14 3NB, United Kingdom  
Phone: (44) (0) 1235 529449  
Free Phone: 0800 37 34 15  
Fax: (44) (0) 1235 533420  
info.EMEA@bio-techne.com

### **General Contact Information**

www.novusbio.com  
Technical Support: technical@novusbio.com  
Orders: orders@novusbio.com  
General: novus@novusbio.com

### **Limitations**

This product is for research use only and is not approved for use in humans or in clinical diagnosis. This product is guaranteed for 1 year from date of receipt.

For more information on our 100% guarantee, please visit [www.novusbio.com/guarantee](http://www.novusbio.com/guarantee)

Earn gift cards/discounts by submitting a review: [www.novusbio.com/reviews/submit/NBP2-52251](http://www.novusbio.com/reviews/submit/NBP2-52251)

Earn gift cards/discounts by submitting a publication using this product:  
[www.novusbio.com/publications](http://www.novusbio.com/publications)

