

# Product Datasheet

## Recombinant Human NM23-H1 Protein NBP2-52250-0.02mg

Unit Size: 0.02 mg

Store at 4C short term. Aliquot and store at -20C long term. Avoid freeze-thaw cycles.

[www.novusbio.com](http://www.novusbio.com)



[technical@novusbio.com](mailto:technical@novusbio.com)

### Publications: 1

Protocols, Publications, Related Products, Reviews, Research Tools and Images at:  
[www.novusbio.com/NBP2-52250](http://www.novusbio.com/NBP2-52250)

Updated 10/12/2023 v.20.1

Earn rewards for product  
reviews and publications.

Submit a publication at [www.novusbio.com/publications](http://www.novusbio.com/publications)

Submit a review at [www.novusbio.com/reviews/destination/NBP2-52250](http://www.novusbio.com/reviews/destination/NBP2-52250)



**NBP2-52250-0.02mg****Recombinant Human NM23-H1 Protein**

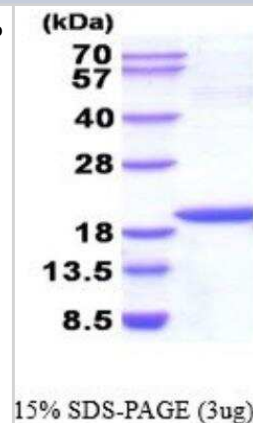
Product Information	
Unit Size	0.02 mg
Concentration	1 mg/ml
Storage	Store at 4C short term. Aliquot and store at -20C long term. Avoid freeze-thaw cycles.
Preservative	No Preservative
Purity	>90%, by SDS-PAGE
Buffer	20 mM Tris-HCl buffer (pH7.5), 1 mM DTT, 10% glycerol
Target Molecular Weight	17.1 kDa

Product Description	
Description	<p>An un-tagged recombinant protein corresponding to the amino acids 1-152 of Human NM23-H1</p> <p><b>Source:</b> <i>E.coli</i></p> <p><b>Amino Acid Sequence:</b> MANCERTFIA IKPDGVQRGL VGEIIRFEQ KGFRVLGLKF MQASEDLLKE HYVDLKDPRF FAGLVKYMHS GPVVAMVWEG LNVVKTGRVM LGETNPADSK PGTIRGDFCI QVGRNIIHGS DSVESAEKEI GLWFHPEELV DYTSCAQNWI YE</p>
Gene ID	4830
Gene Symbol	NME1
Species	Human
Details of Functionality	Specific activity is > 1,200 units/mg, and is defined as the amount of enzyme that convert 1.0 umole each of ATP and TDP to ADP and TTP per minute at pH 7.5 at 25C in a couple system with PK/LDH.
Endotoxin Note	< 1.0 EU per 1 microgram of protein (determined by LAL method)

Product Application Details	
Applications	SDS-Page, Enzyme Activity
Recommended Dilutions	SDS-Page, Enzyme Activity

**Images**

SDS-Page: Recombinant Human NM23-H1 Protein [NBP2-52250] - 15% SDS Page (3 ug)



## Publications

Anantha J, Goulding SR, Tuboly E Et al. NME1 Protects Against Neurotoxin-, alpha-Synuclein- and LRRK2-Induced Neurite Degeneration in Cell Models of Parkinson's Disease Molecular neurobiology 2021-10-08 [PMID: 34623600]



### Novus Biologicals USA

10730 E. Briarwood Avenue  
Centennial, CO 80112  
USA  
Phone: 303.730.1950  
Toll Free: 1.888.506.6887  
Fax: 303.730.1966  
novus@novusbio.com

### Bio-Techne Canada

21 Canmotor Ave  
Toronto, ON M8Z 4E6  
Canada  
Phone: 905.827.6400  
Toll Free: 855.668.8722  
Fax: 905.827.6402  
canada.inquires@bio-techne.com

### Bio-Techne Ltd

19 Barton Lane  
Abingdon Science Park  
Abingdon, OX14 3NB, United Kingdom  
Phone: (44) (0) 1235 529449  
Free Phone: 0800 37 34 15  
Fax: (44) (0) 1235 533420  
info.EMEA@bio-techne.com

### General Contact Information

www.novusbio.com  
Technical Support: technical@novusbio.com  
Orders: orders@novusbio.com  
General: novus@novusbio.com

### Limitations

This product is for research use only and is not approved for use in humans or in clinical diagnosis. This product is guaranteed for 1 year from date of receipt.

For more information on our 100% guarantee, please visit [www.novusbio.com/guarantee](http://www.novusbio.com/guarantee)

Earn gift cards/discounts by submitting a review: [www.novusbio.com/reviews/submit/NBP2-52250](http://www.novusbio.com/reviews/submit/NBP2-52250)

Earn gift cards/discounts by submitting a publication using this product:  
[www.novusbio.com/publications](http://www.novusbio.com/publications)

