

Product Datasheet

Recombinant Human MMADHC His Protein NBP2-51545-0.1mg

Unit Size: 0.1 mg

Store at 4C short term. Aliquot and store at -20C long term. Avoid freeze-thaw cycles.

www.novusbio.com



technical@novusbio.com

Protocols, Publications, Related Products, Reviews, Research Tools and Images at:
www.novusbio.com/NBP2-51545

Updated 5/6/2021 v.20.1

Earn rewards for product
reviews and publications.

Submit a publication at www.novusbio.com/publications

Submit a review at www.novusbio.com/reviews/destination/NBP2-51545



NBP2-51545-0.1mg

Recombinant Human MMADHC His Protein

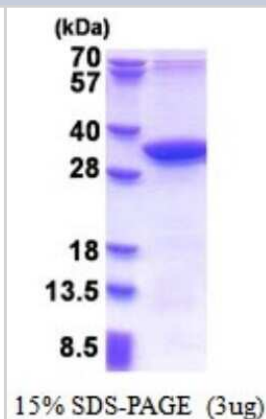
| Product Information | |
|-------------------------|--|
| Unit Size | 0.1 mg |
| Concentration | 1 mg/ml |
| Storage | Store at 4C short term. Aliquot and store at -20C long term. Avoid freeze-thaw cycles. |
| Preservative | No Preservative |
| Purity | >90%, by SDS-PAGE |
| Buffer | 20 mM Tris-HCl buffer (pH 8.0), 0.15 M NaCl, 10% glycerol, 1 mM DTT |
| Target Molecular Weight | 31 kDa |

| Product Description | |
|---------------------|---|
| Description | <p>A recombinant protein with a N-Terminal His-tag and corresponding to the amino acids 39-296 of Human MMADHC</p> <p>Source: <i>E.coli</i></p> <p>Amino Acid Sequence: MGSSHHHHHH SGLVPRGSH MGSSDESHVA AAPPDICSRT VWPDETMGPF GPQDQRFQLP GNIGFDCHLN GTASQKKSLV HKTLPDVLAE PLSSERHEFV MAQYVNEFQG NDAPVEQEIN SAETYFESAR VECAIQTCP E LLRKDFESLF PEVANGKLM I LTVTQKTKND MTWVSEEVEI EREVLLKFI NGAKEICYAL RAEGYWADFI DPSSGLAFFG PYTNNTLFET DERYRHLGFS VDDLGCCKVI RHSLWGTHTV VGSIFTNATP DSHIMKKLSG N</p> |
| Gene ID | 27249 |
| Gene Symbol | MMADHC |
| Species | Human |

| Product Application Details | |
|-----------------------------|----------|
| Applications | SDS-Page |
| Recommended Dilutions | SDS-Page |

Images

SDS-Page: Recombinant Human MMADHC Protein [NBP2-51545] - 15% SDS Page (3 ug)





Novus Biologicals USA

10730 E. Briarwood Avenue
Centennial, CO 80112
USA
Phone: 303.730.1950
Toll Free: 1.888.506.6887
Fax: 303.730.1966
novus@novusbio.com

Bio-Techne Canada

21 Canmotor Ave
Toronto, ON M8Z 4E6
Canada
Phone: 905.827.6400
Toll Free: 855.668.8722
Fax: 905.827.6402
canada.inquires@bio-techne.com

Bio-Techne Ltd

19 Barton Lane
Abingdon Science Park
Abingdon, OX14 3NB, United Kingdom
Phone: (44) (0) 1235 529449
Free Phone: 0800 37 34 15
Fax: (44) (0) 1235 533420
info.EMEA@bio-techne.com

General Contact Information

www.novusbio.com
Technical Support: technical@novusbio.com
Orders: orders@novusbio.com
General: novus@novusbio.com

Products Related to NBP2-51545-0.1mg

| | |
|---------------|------------------------------------|
| NBP2-38351PEP | MMADHC Recombinant Protein Antigen |
| NB300-119 | NK1R Antibody - BSA Free |
| NBP2-38351 | MMADHC Antibody |
| NBP2-37574 | CBL Antibody (3B12) |

Limitations

This product is for research use only and is not approved for use in humans or in clinical diagnosis. This product is guaranteed for 1 year from date of receipt.

For more information on our 100% guarantee, please visit www.novusbio.com/guarantee

Earn gift cards/discounts by submitting a review: www.novusbio.com/reviews/submit/NBP2-51545

Earn gift cards/discounts by submitting a publication using this product:
www.novusbio.com/publications

