

# Product Datasheet

## Recombinant Rat Lactate Dehydrogenase A/LDHA His Protein NBP2-50564-50ug

Unit Size: 50 ug

Store at 4C short term. Aliquot and store at -20C long term. Avoid freeze-thaw cycles.

[www.novusbio.com](http://www.novusbio.com)



[technical@novusbio.com](mailto:technical@novusbio.com)

Protocols, Publications, Related Products, Reviews, Research Tools and Images at:  
[www.novusbio.com/NBP2-50564](http://www.novusbio.com/NBP2-50564)

Updated 10/12/2023 v.20.1

Earn rewards for product  
reviews and publications.

Submit a publication at [www.novusbio.com/publications](http://www.novusbio.com/publications)

Submit a review at [www.novusbio.com/reviews/destination/NBP2-50564](http://www.novusbio.com/reviews/destination/NBP2-50564)



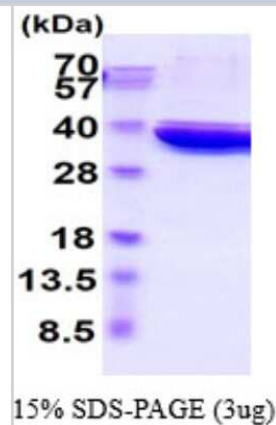
**NBP2-50564-50ug****Recombinant Rat Lactate Dehydrogenase A/LDHA His Protein**

<b>Product Information</b>	
<b>Unit Size</b>	50 ug
<b>Concentration</b>	0.25 mg/ml
<b>Storage</b>	Store at 4C short term. Aliquot and store at -20C long term. Avoid freeze-thaw cycles.
<b>Preservative</b>	No Preservative
<b>Purity</b>	>95%, by SDS-PAGE
<b>Buffer</b>	PBS (pH 7.4), 1 mM DTT, 20% glycerol
<b>Target Molecular Weight</b>	37.5 kDa
<b>Product Description</b>	
<b>Description</b>	<p>A bioactive recombinant protein with a C-Terminal His-tag and corresponding to the amino acids 1-332 of Rat Lactate Dehydrogenase A/LDHA</p> <p><b>Source:</b> <i>Baculovirus</i></p> <p><b>Amino Acid Sequence:</b> MAALKDQLIV NLLKEEQVPQ NKITVVGVGA  VGMACAISIL MKDLADELAL VDVIEDKLKG EMMDLQHGS LFLKTPKIVSS  KDYSVTANSK LVIITAGARQ QEGESRLNLV QRNVNIFKFI IPNVVKYSPQ  CKLLIVSNPV DILTYVAWKI SGFPKNRVIG SGCNLD SARF RYLMGERLGV  HPLSCHGWVL GEHGDSSVPV WSGVNVAGVS LKSLNPQLGT  DADKEQWKDV HKQVVDSAYE VIKLKG YTSW AIGLSVADLA ESIMKNLRRV  HPISTMIKGL YGIKEDVFLS VPCILGQNGI SDVVKVTLTP DEEARLK KSA  DTLWGIQKEL QFLEHHHHHH</p>
<b>Gene ID</b>	3939
<b>Gene Symbol</b>	LDHA
<b>Species</b>	Rat
<b>Details of Functionality</b>	Specific activity is > 200 units/mg, in which one unit will convert 1.0 umole of pyruvate to L-lactate and beta-NAD per minute at pH 7.5 at 37C.
<b>Endotoxin Note</b>	< 1.0 EU per 1 microgram of protein (determined by LAL method)
<b>Product Application Details</b>	
<b>Applications</b>	SDS-Page, Enzyme Activity
<b>Recommended Dilutions</b>	SDS-Page, Enzyme Activity



## Images

SDS-Page: Recombinant Rat Lactate Dehydrogenase A/LDHA Protein  
[NBP2-50564] - 15 % SDS-PAGE (3ug)





### **Novus Biologicals USA**

10730 E. Briarwood Avenue  
Centennial, CO 80112  
USA

Phone: 303.730.1950  
Toll Free: 1.888.506.6887  
Fax: 303.730.1966  
novus@novusbio.com

### **Bio-Techne Canada**

21 Canmotor Ave  
Toronto, ON M8Z 4E6  
Canada

Phone: 905.827.6400  
Toll Free: 855.668.8722  
Fax: 905.827.6402  
canada.inquires@bio-techne.com

### **Bio-Techne Ltd**

19 Barton Lane  
Abingdon Science Park  
Abingdon, OX14 3NB, United Kingdom  
Phone: (44) (0) 1235 529449  
Free Phone: 0800 37 34 15  
Fax: (44) (0) 1235 533420  
info.EMEA@bio-techne.com

### **General Contact Information**

www.novusbio.com  
Technical Support: technical@novusbio.com  
Orders: orders@novusbio.com  
General: novus@novusbio.com

### **Limitations**

This product is for research use only and is not approved for use in humans or in clinical diagnosis. This product is guaranteed for 1 year from date of receipt.

For more information on our 100% guarantee, please visit [www.novusbio.com/guarantee](http://www.novusbio.com/guarantee)

Earn gift cards/discounts by submitting a review: [www.novusbio.com/reviews/submit/NBP2-50564](http://www.novusbio.com/reviews/submit/NBP2-50564)

Earn gift cards/discounts by submitting a publication using this product:  
[www.novusbio.com/publications](http://www.novusbio.com/publications)

