

# Product Datasheet

## CYP2R1 Antibody (M26-P6H1) - BSA Free NBP2-50204

Unit Size: 0.1 ml

Store at 4C short term. Aliquot and store at -20C long term. Avoid freeze-thaw cycles.

[www.novusbio.com](http://www.novusbio.com)



[technical@novusbio.com](mailto:technical@novusbio.com)

Protocols, Publications, Related Products, Reviews, Research Tools and Images at:  
[www.novusbio.com/NBP2-50204](http://www.novusbio.com/NBP2-50204)

Updated 9/9/2025 v.20.1

Earn rewards for product  
reviews and publications.

Submit a publication at [www.novusbio.com/publications](http://www.novusbio.com/publications)

Submit a review at [www.novusbio.com/reviews/destination/NBP2-50204](http://www.novusbio.com/reviews/destination/NBP2-50204)



**NBP2-50204**

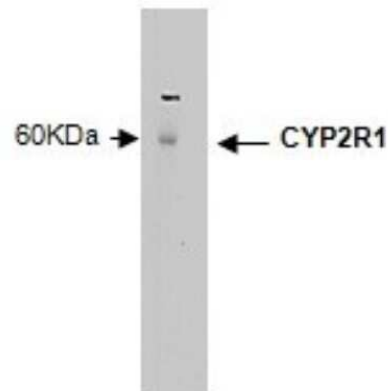
CYP2R1 Antibody (M26-P6H1) - BSA Free

Product Information	
Unit Size	0.1 ml
Concentration	1 mg/ml
Storage	Store at 4C short term. Aliquot and store at -20C long term. Avoid freeze-thaw cycles.
Clonality	Monoclonal
Clone	M26-P6H1
Preservative	0.02% Sodium Azide
Isotype	IgG1 Lambda
Purity	Protein A purified
Buffer	PBS
Product Description	
Description	Novus Biologicals Mouse CYP2R1 Antibody (M26-P6H1) - BSA Free (NBP2-50204) is a monoclonal antibody validated for use in IHC, WB and ELISA. All Novus Biologicals antibodies are covered by our 100% guarantee.
Host	Mouse
Gene ID	120227
Gene Symbol	CYP2R1
Species	Human, Mouse
Immunogen	Ovalbumin-conjugated synthetic peptide QPYLICAERR (C-terminal sequence).
Product Application Details	
Applications	Western Blot, ELISA, Immunohistochemistry
Recommended Dilutions	Western Blot 1:100 - 1:2000, ELISA 1:100 - 1:2000, Immunohistochemistry 1:10 - 1:500
Application Notes	Positive control(s): IHC - formalin-fixed, paraffin-embedded human kidney sections. WB: pooled liver microsomes.

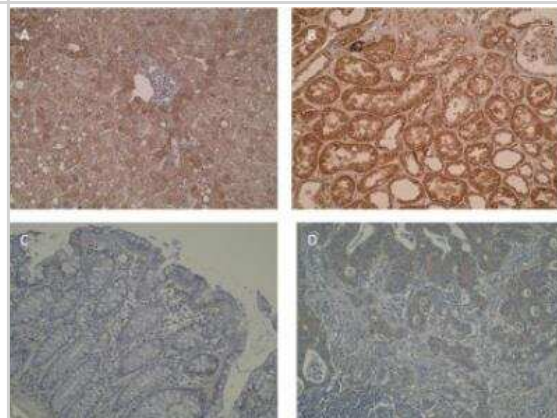


## Images

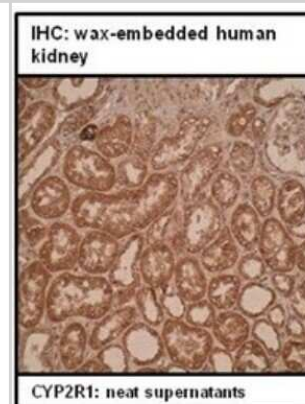
Western Blot: CYP2R1 Antibody (M26-P6H1) [NBP2-50204] - Western Blot using mAb M26P6H1



Immunohistochemistry: CYP2R1 Antibody (M26-P6H1) [NBP2-50204] - Shows positive cytoplasmic immunostaining in normal liver (A) and normal kidney (B) as reported by literature. Primary colorectal (C) and metastatic (D) colorectal tumors showed moderate staining, while normal colon mucosa was negatively stained.



Immunohistochemistry: CYP2R1 Antibody (M26-P6H1) [NBP2-50204] - Staining of a human kidney cross section.





### **Novus Biologicals USA**

10730 E. Briarwood Avenue  
Centennial, CO 80112  
USA  
Phone: 303.730.1950  
Toll Free: 1.888.506.6887  
Fax: 303.730.1966  
nb-customerservice@bio-techne.com

### **Bio-Techne Canada**

21 Canmotor Ave  
Toronto, ON M8Z 4E6  
Canada  
Phone: 905.827.6400  
Toll Free: 855.668.8722  
Fax: 905.827.6402  
canada.inquires@bio-techne.com

### **Bio-Techne Ltd**

19 Barton Lane  
Abingdon Science Park  
Abingdon, OX14 3NB, United Kingdom  
Phone: (44) (0) 1235 529449  
Free Phone: 0800 37 34 15  
Fax: (44) (0) 1235 533420  
info.EMEA@bio-techne.com

### **General Contact Information**

www.novusbio.com  
Technical Support: nb-technical@bio-techne.com  
Orders: nb-customerservice@bio-techne.com  
General: novus@novusbio.com

### **Products Related to NBP2-50204**

---

HAF007	Goat anti-Mouse IgG Secondary Antibody [HRP]
NB720-B	Rabbit anti-Mouse IgG (H+L) Secondary Antibody [Biotin]
NBP1-96982	Mouse IgG1 Lambda Isotype Control (MG1L)
NBP2-13895PEP	CYP2R1 Recombinant Protein Antigen

---

### **Limitations**

This product is for research use only and is not approved for use in humans or in clinical diagnosis. Primary Antibodies are guaranteed for 1 year from date of receipt.

For more information on our 100% guarantee, please visit [www.novusbio.com/guarantee](http://www.novusbio.com/guarantee)

Earn gift cards/discounts by submitting a review: [www.novusbio.com/reviews/submit/NBP2-50204](http://www.novusbio.com/reviews/submit/NBP2-50204)

Earn gift cards/discounts by submitting a publication using this product:  
[www.novusbio.com/publications](http://www.novusbio.com/publications)

