

Product Datasheet

Calreticulin Antibody (6C6) - BSA Free NBP2-50053SS

Unit Size: 0.025 ml

Store at 4C short term. Aliquot and store at -20C long term. Avoid freeze-thaw cycles.

www.novusbio.com



technical@novusbio.com

Protocols, Publications, Related Products, Reviews, Research Tools and Images at:
www.novusbio.com/NBP2-50053

Updated 5/29/2025 v.20.1

Earn rewards for product
reviews and publications.

Submit a publication at www.novusbio.com/publications

Submit a review at www.novusbio.com/reviews/destination/NBP2-50053



NBP2-50053SS

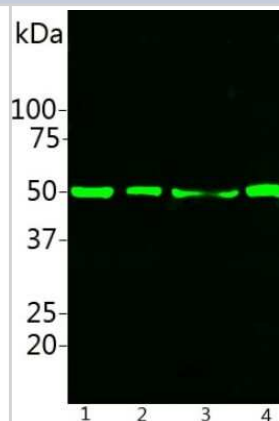
Calreticulin Antibody (6C6) - BSA Free

Product Information	
Unit Size	0.025 ml
Concentration	1 mg/ml
Storage	Store at 4C short term. Aliquot and store at -20C long term. Avoid freeze-thaw cycles.
Clonality	Monoclonal
Clone	6C6
Preservative	5mM Sodium Azide
Isotype	IgG1
Purity	Immunogen affinity purified
Buffer	50% PBS, 50% glycerol
Target Molecular Weight	48 kDa
Product Description	
Host	Mouse
Gene ID	811
Gene Symbol	CALR
Species	Human, Mouse, Rat
Immunogen	Calreticulin Antibody (6C6) was developed against a synthetic peptide VESGSLEDDWDFLPPKKI corresponding to amino acids 191-208 of human Calreticulin, including the LC3 interacting region or LIR. [UniProt# P27797]
Product Application Details	
Applications	Western Blot, Immunocytochemistry/ Immunofluorescence, Immunohistochemistry
Recommended Dilutions	Western Blot 1:1000 - 1:5000, Immunohistochemistry 1:1000-1:5000, Immunocytochemistry/ Immunofluorescence 1:1000 - 1:5000

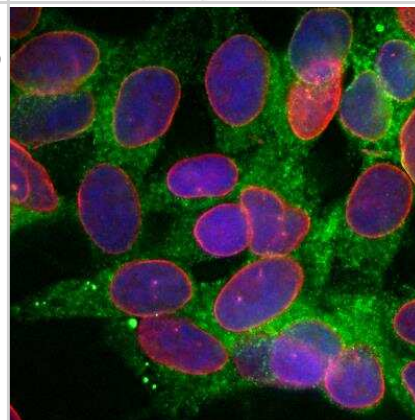


Images

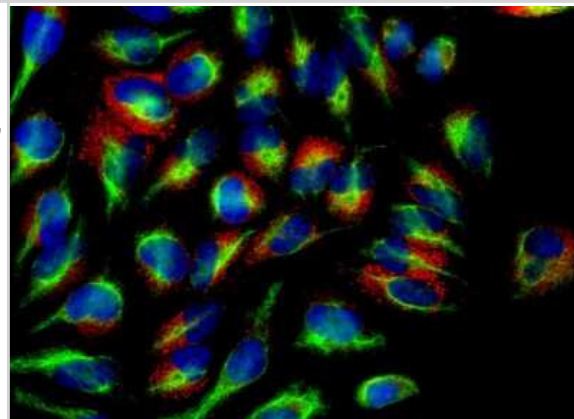
Western Blot: Calreticulin Antibody (6C6) [NBP2-50053] - Analysis of NBP2-50053 in HEK293 (lane 1), 3T3 (lane 2), SHSY-5Y (lane 3) and HeLa cells (lane 4). NBP2-50053 binds strongly to Calreticulin in 50 kDa.



Immunocytochemistry/Immunofluorescence: Calreticulin Antibody (6C6) [NBP2-50053] - Analysis of SH-SY5Y cells stained with mouse mAb to calreticulin, NBP2-50053, dilution 1:500 in green and costained with chicken pAb to lamin A/C, dilution 1:2,000 in red. The blue is DAPI staining of nuclear DNA. The MCA-6C6 antibody reveals granular staining of cytoplasm, while the lamin AC antibody stains the nuclear lamina and membrane.



Immunocytochemistry/Immunofluorescence: Calreticulin Antibody (6C6) [NBP2-50053] - HeLa cell cultures were stained with NBP2-50053 (red). Calreticulin predominately localized in vesicles and the ER. Cells were counterstained with chicken polyclonal antibody to Vimentin (NB300-223, green). Blue is a DNA stain.





Novus Biologicals USA

10730 E. Briarwood Avenue
Centennial, CO 80112
USA
Phone: 303.730.1950
Toll Free: 1.888.506.6887
Fax: 303.730.1966
nb-customerservice@bio-techne.com

Bio-Techne Canada

21 Canmotor Ave
Toronto, ON M8Z 4E6
Canada
Phone: 905.827.6400
Toll Free: 855.668.8722
Fax: 905.827.6402
canada.inquires@bio-techne.com

Bio-Techne Ltd

19 Barton Lane
Abingdon Science Park
Abingdon, OX14 3NB, United Kingdom
Phone: (44) (0) 1235 529449
Free Phone: 0800 37 34 15
Fax: (44) (0) 1235 533420
info.EMEA@bio-techne.com

General Contact Information

www.novusbio.com
Technical Support: nb-technical@bio-
techne.com
Orders: nb-customerservice@bio-techne.com
General: novus@novusbio.com

Limitations

This product is for research use only and is not approved for use in humans or in clinical diagnosis. Primary Antibodies are guaranteed for 1 year from date of receipt.

For more information on our 100% guarantee, please visit www.novusbio.com/guarantee

Earn gift cards/discounts by submitting a review: www.novusbio.com/reviews/submit/NBP2-50053

Earn gift cards/discounts by submitting a publication using this product:
www.novusbio.com/publications

