

Product Datasheet

ALDH1L1 Antibody (4A12) NBP2-50045

Unit Size: 0.1 ml

Store at 4C short term. Aliquot and store at -20C long term. Avoid freeze-thaw cycles.

www.novusbio.com



technical@novusbio.com

Reviews: 1 Publications: 3

Protocols, Publications, Related Products, Reviews, Research Tools and Images at:
www.novusbio.com/NBP2-50045

Updated 5/23/2024 v.20.1

**Earn rewards for product
reviews and publications.**

Submit a publication at www.novusbio.com/publications

Submit a review at www.novusbio.com/reviews/destination/NBP2-50045



NBP2-50045

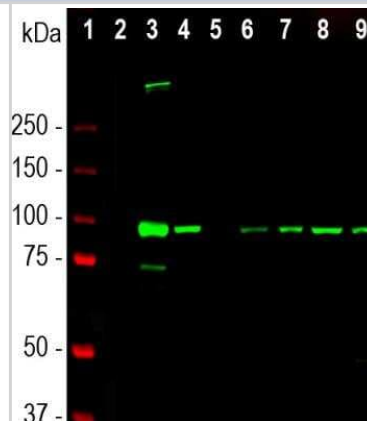
ALDH1L1 Antibody (4A12)

Product Information	
Unit Size	0.1 ml
Concentration	1 mg/ml
Storage	Store at 4C short term. Aliquot and store at -20C long term. Avoid freeze-thaw cycles.
Clonality	Monoclonal
Clone	4A12
Preservative	0.035% Sodium Azide
Isotype	IgG2b
Purity	Immunogen affinity purified
Buffer	50% PBS, 50% glycerol
Target Molecular Weight	100 kDa
Product Description	
Host	Mouse
Gene ID	10840
Gene Symbol	ALDH1L1
Species	Human, Mouse, Rat
Immunogen	Amino acids 1- 401 of human ALDH1L1. [UniProt# O75891]
Product Application Details	
Applications	Western Blot, Immunocytochemistry/ Immunofluorescence, Immunohistochemistry
Recommended Dilutions	Western Blot 1:5000-1:10000, Immunohistochemistry 1:1000-1:2000, Immunocytochemistry/ Immunofluorescence 1:1000-1:2000

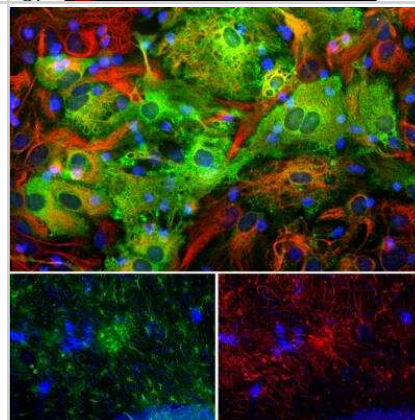


Images

Western Blot: ALDH1L1 Antibody (4A12) [NBP2-50045] - Analysis of rat and mouse tissue lysates using mouse ALDH1L1 mAb, dilution 1:5000 (Green): [1] protein standard (Red), rat tissue lysates: [2] heart, [3] liver, [4] kidney, [5] lung, [6] brain, and [7] spinal cord; Also mouse tissue lysates: [8] brain, and [9] spinal cord. The band at 100kDa corresponds to ALDH1L1 protein. In line with published work, ALDH1L1 is a major protein of liver and CNS tissue.



Immunocytochemistry/Immunofluorescence: ALDH1L1 Antibody (4A12) [NBP2-50045] - Analysis of mixed cortical neuron-glial cell culture from an E20 rat stained with mouse ALDH1L1 mAb, dilution 1:1,000 (Green), and costained with chicken Vimentin pAb, dilution 1:5000 (Red). DAPI staining of nuclear DNA (Blue). The ALDH1L1 antibody produces strong cytoplasmic staining of astrocytic glial cells, while the Vimentin antibody labels the intermediate filament cytoskeleton in fibroblasts and other glial cells. Some cells, presumably developing astrocytes, are stained by both ALDH1L1 and vimentin and so appear yellow.



Publications

Marc Oria, Bedika Pathak, Zhen Li, Kenan Bakri, Kara Gouwens, Maria Florencia Varela, Kristin Lampe, Kendall P. Murphy, Chia-Ying Lin, Jose L. Peiro Premature Neural Progenitor Cell Differentiation Into Astrocytes in Retinoic Acid-Induced Spina Bifida Rat Model *Frontiers in Molecular Neuroscience* 2022-06-17 [PMID: 35782393]

Hamilton HL, Kinscherf NA, Balmer G et al. FABP7 drives an inflammatory response in human astrocytes and is upregulated in Alzheimer's disease *GeroScience* 2023-09-09 [PMID: 37688656] (IHC-P, Mouse)

Yoon S, Hong N, Lee M, Ahn J Photobiomodulation with a 660-Nanometer Light-Emitting Diode Promotes Cell Proliferation in Astrocyte Culture Cells 2021-07-02 [PMID: 34359834] (ICC/IF, WB)



Novus Biologicals USA

10730 E. Briarwood Avenue
Centennial, CO 80112
USA
Phone: 303.730.1950
Toll Free: 1.888.506.6887
Fax: 303.730.1966
nb-customerservice@bio-techne.com

Bio-Techne Canada

21 Canmotor Ave
Toronto, ON M8Z 4E6
Canada
Phone: 905.827.6400
Toll Free: 855.668.8722
Fax: 905.827.6402
canada.inquires@bio-techne.com

Bio-Techne Ltd

19 Barton Lane
Abingdon Science Park
Abingdon, OX14 3NB, United Kingdom
Phone: (44) (0) 1235 529449
Free Phone: 0800 37 34 15
Fax: (44) (0) 1235 533420
info.EMEA@bio-techne.com

General Contact Information

www.novusbio.com
Technical Support: nb-technical@bio-techne.com
Orders: nb-customerservice@bio-techne.com
General: novus@novusbio.com

Products Related to NBP2-50045

HAF007	Goat anti-Mouse IgG Secondary Antibody [HRP]
NB720-B	Rabbit anti-Mouse IgG (H+L) Secondary Antibody [Biotin]
NBP2-27231	Mouse IgG2b Isotype Control (MPC-11)
H00010840-Q01-10ug	Recombinant Human ALDH1L1 GST (N-Term) Protein

Limitations

This product is for research use only and is not approved for use in humans or in clinical diagnosis. Primary Antibodies are guaranteed for 1 year from date of receipt.

For more information on our 100% guarantee, please visit www.novusbio.com/guarantee

Earn gift cards/discounts by submitting a review: www.novusbio.com/reviews/submit/NBP2-50045

Earn gift cards/discounts by submitting a publication using this product:
www.novusbio.com/publications

