

Product Datasheet

Siglec-2/CD22 Antibody (RFB4) [FITC] NBP2-49890F

Unit Size: 2 ml

Store at 4C in the dark.

www.novusbio.com



technical@novusbio.com

Protocols, Publications, Related Products, Reviews, Research Tools and Images at:
www.novusbio.com/NBP2-49890F

Updated 11/2/2024 v.20.1

Earn rewards for product
reviews and publications.

Submit a publication at www.novusbio.com/publications

Submit a review at www.novusbio.com/reviews/destination/NBP2-49890F



NBP2-49890F

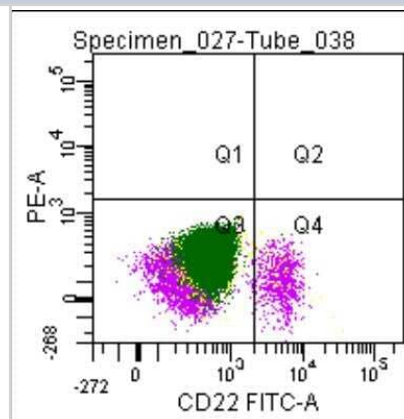
Siglec-2/CD22 Antibody (RFB4) [FITC]

Product Information	
Unit Size	2 ml
Concentration	Please see the vial label for concentration. If unlisted please contact technical services.
Storage	Store at 4C in the dark.
Clonality	Monoclonal
Clone	RFB4
Preservative	0.05% Sodium Azide
Isotype	IgG1
Conjugate	FITC
Purity	Protein A or G purified
Buffer	PBS (pH 7.2) and 1.0% (w/v) BSA
Product Description	
Host	Mouse
Gene ID	933
Gene Symbol	CD22
Species	Human, Canine
Specificity/Sensitivity	This antibody recognizes surface Siglec-2/CD22 expressed by mature peripheral B-cells and cytoplasmatic Siglec-2/CD22 expressed by precursor B-cells. The sensitivity is determined by staining well-defined blood samples from representative donors with serial-fold mAb dilutions to obtain a titration curve that allows relating the mAb concentration to the percentage of stained cells and geometric MFI (mean fluorescence intensity). For this purpose, a mAb-concentration range is selected to include both the saturation point (i.e. the mAb dilution expected to bind all epitopes on the target cell) and the detection threshold (i.e. the mAb dilution expected to represent the least amount of mAb needed to detect an identical percentage of cells). In practice, 50 ul of leukocytes containing 10^7 cells/ml are stained with 20 ul mAb of various dilutions to obtain a titration curve and to identify the saturation point and detection threshold. The final concentration of the product is then adjusted to be at least 3-fold above the detection threshold. In addition and to control lot-to-lot variation, the given lot is compared and adjusted to fluorescence standards with defined intensity.
Immunogen	135 kDa type I integral membrane protein
Product Application Details	
Applications	Flow Cytometry, Immunocytochemistry/ Immunofluorescence, Immunofluorescence
Recommended Dilutions	Flow Cytometry, Immunocytochemistry/ Immunofluorescence, Immunofluorescence

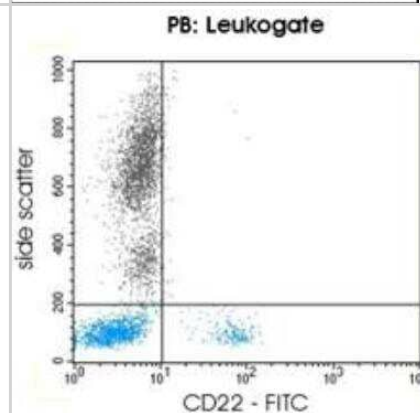


Images

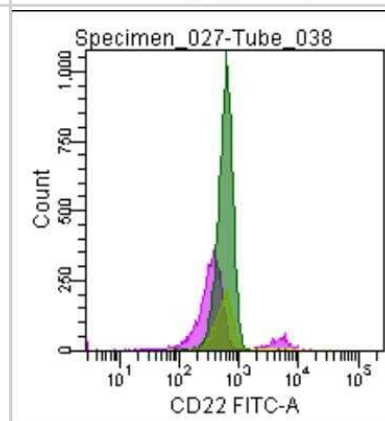
Flow Cytometry: Siglec-2/CD22 Antibody (RFB4) [FITC] [NBP2-49890F]
- Flow cytometric analysis of a normal blood sample after immunostaining with Siglec-2/CD22 Antibody (RFB4) [FITC].



Flow Cytometry: Siglec-2/CD22 Antibody (RFB4) [FITC] [NBP2-49890F]
- Flow cytometric analysis using Siglec-2/CD22 Antibody (RFB4) [FITC].



Flow Cytometry: Siglec-2/CD22 Antibody (RFB4) [FITC] [NBP2-49890F]
- Flow cytometric analysis of a normal blood sample after immunostaining with Siglec-2/CD22 Antibody (RFB4) [FITC].





Novus Biologicals USA

10730 E. Briarwood Avenue
Centennial, CO 80112
USA
Phone: 303.730.1950
Toll Free: 1.888.506.6887
Fax: 303.730.1966
nb-customerservice@bio-techne.com

Bio-Techne Canada

21 Canmotor Ave
Toronto, ON M8Z 4E6
Canada
Phone: 905.827.6400
Toll Free: 855.668.8722
Fax: 905.827.6402
canada.inquires@bio-techne.com

Bio-Techne Ltd

19 Barton Lane
Abingdon Science Park
Abingdon, OX14 3NB, United Kingdom
Phone: (44) (0) 1235 529449
Free Phone: 0800 37 34 15
Fax: (44) (0) 1235 533420
info.EMEA@bio-techne.com

General Contact Information

www.novusbio.com
Technical Support: nb-technical@bio-techne.com
Orders: nb-customerservice@bio-techne.com
General: novus@novusbio.com

Products Related to NBP2-49890F

NBP1-96849	Mouse IgG1 Isotype Control (MG1) [FITC]
NBP1-87041PEP	Siglec-2/CD22 Recombinant Protein Antigen
7268-CT-100	CTLA-4 [Unconjugated]
1968-SL-050	Siglec-2/CD22 [Unconjugated]

Limitations

This product is for research use only and is not approved for use in humans or in clinical diagnosis. Primary Antibodies are guaranteed for 1 year from date of receipt.

For more information on our 100% guarantee, please visit www.novusbio.com/guarantee

Earn gift cards/discounts by submitting a review: www.novusbio.com/reviews/submit/NBP2-49890F

Earn gift cards/discounts by submitting a publication using this product:
www.novusbio.com/publications

